



West Memorial Building Rehabilitation Project

ACPDR DRAFT Presentation

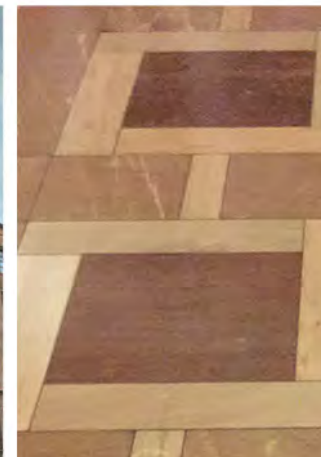
West Memorial Building Developed Design and; Building Entry, Landscape, and Exterior Illumination Concept Design



REGENERATE 344

Moriyama & Teshima Architects +
Kasian Architecture
in Joint Venture

April 22, 2019



Current Project Status

- Currently at end of Design Development stage
- April 4th 2019: FHBRO presentation
- May 2019: Treasury Board Budget approval
- June 2019: NCC Board approval in for Concept, Building Entry and Landscape
- Summer 2019: First tenders (demolition)
- Fall 2019: Structural tenders



Memorial Colonnade – Next Steps

- Project Approval – Summer 2019.
- Design : FHBRO and ACPDR review Summer 2020
- Implementation – Fall 2021.
- Scope to include rehabilitation of Memorial Colonnade and landscape / urban realm
- Vision: to rehabilitate the Memorial Colonnade and its surrounding landscape to elevate the memorial aspects and its presence as a main threshold into the City



ACPDR Previous comments

- **Visitor entry pavilion to be integrated into building**
Interior option analysis and preferred option proposed
- **Grand Hall and Courtyard skylights to address technical challenges**
Grand Hall and Courtyard skylights currently being developed including snow drift, structure, drainage, glass selection, mechanical ventilation
- **Windows in courtyard to have access to daylight & views**
Windows in lightwell have access to daylight, incl. high performance translucent glazing to be used to allow deeper penetration of daylight
- **Main stair to make prominent accessible route**
Elevator introduced at centre of stair to address prominence
- **Universal accessibility to be addressed on the outside & courtrooms**
Universal accessibility addressed in all spaces



Agenda

Part 1 Entrance Design

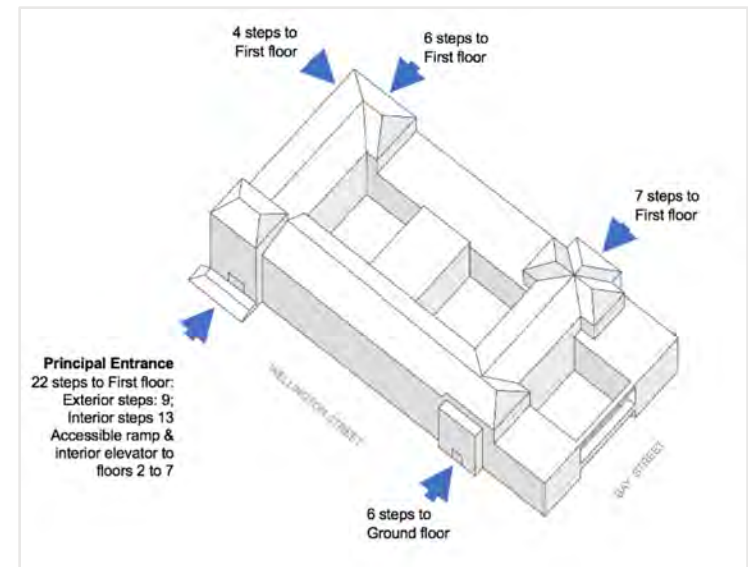
Part 2 Site Design

Part 3 Grand Hall & Courts



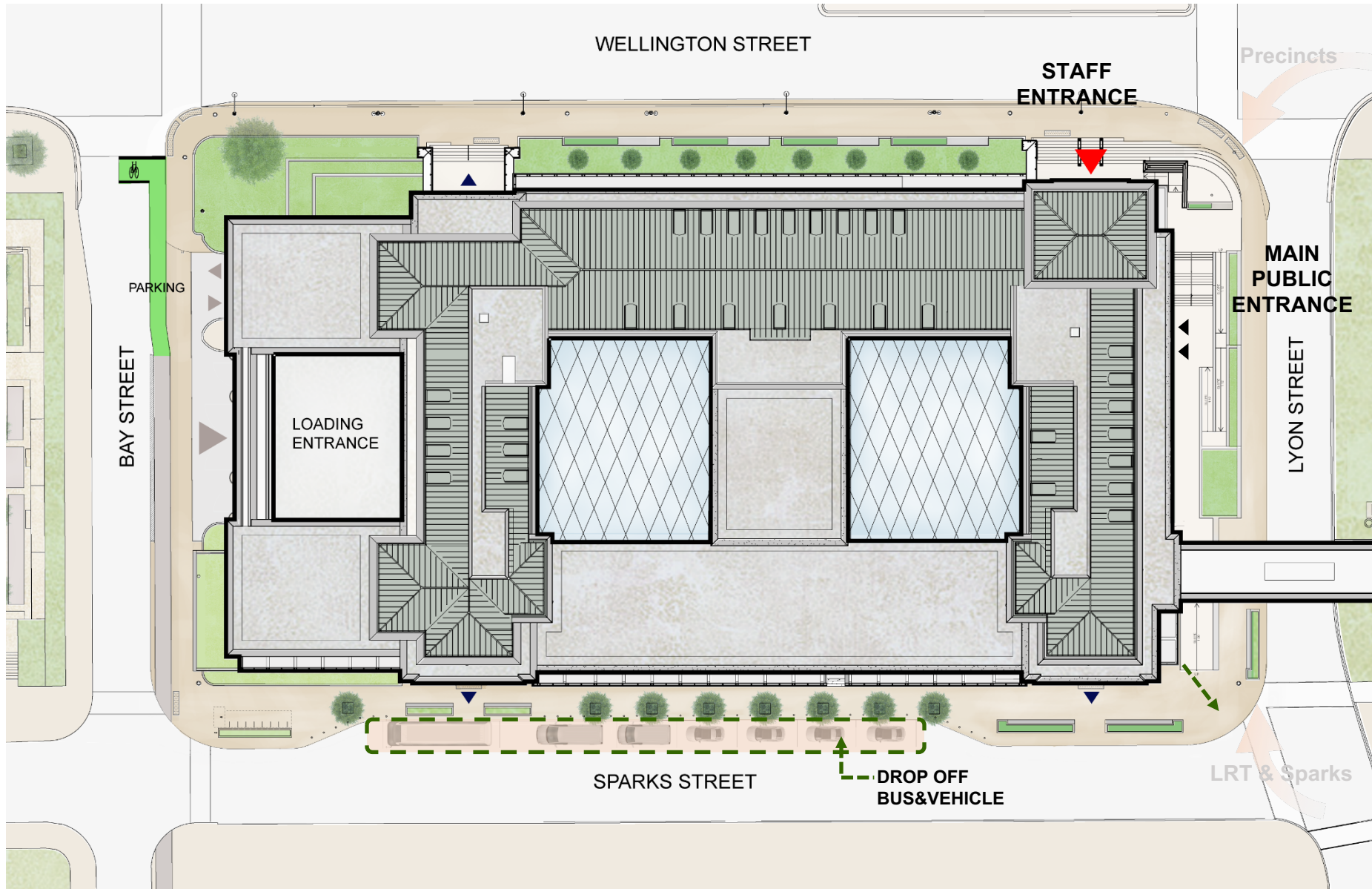
1. Entrance Design: Design Objectives

- i. Evokes prominence of Supreme Court of Canada
- ii. Accessible
- iii. Respectful of heritage
- iv. Fulfills security requirements
- v. Presence on Confederation Boulevard
- vi. Generous and welcoming entrance
- vii. Legible main entrance, gracious and intuitive path (not circuitous)



Existing context of entrances

1. Entrance Design: site plan and entrance locations



1. Entrance Design: Original Visitor Entry Pavilion



Projected condition

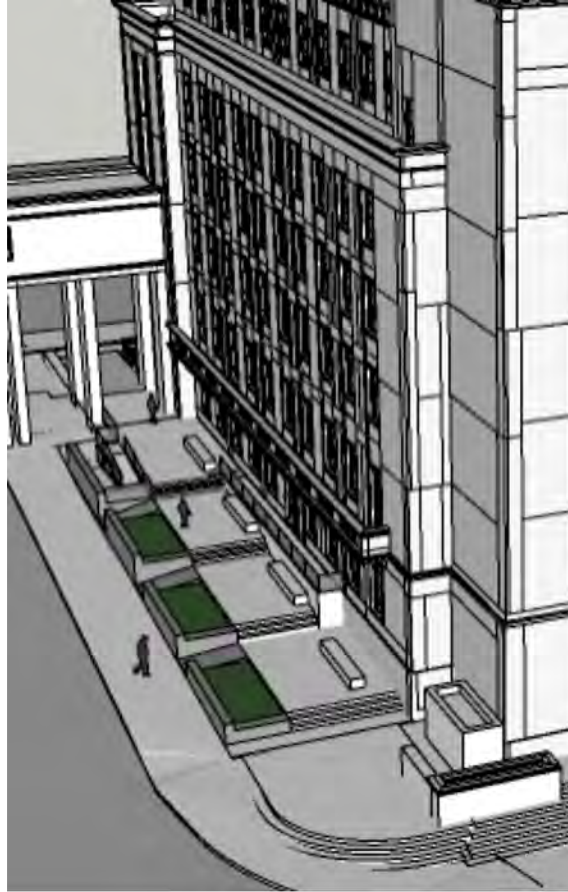
1. Entrance Design: 3 developed options

- Interior Entrance Study was undertaken
- Functional & technical requirements were analyzed
- Multiple options were explored, 3 options were selected for further development

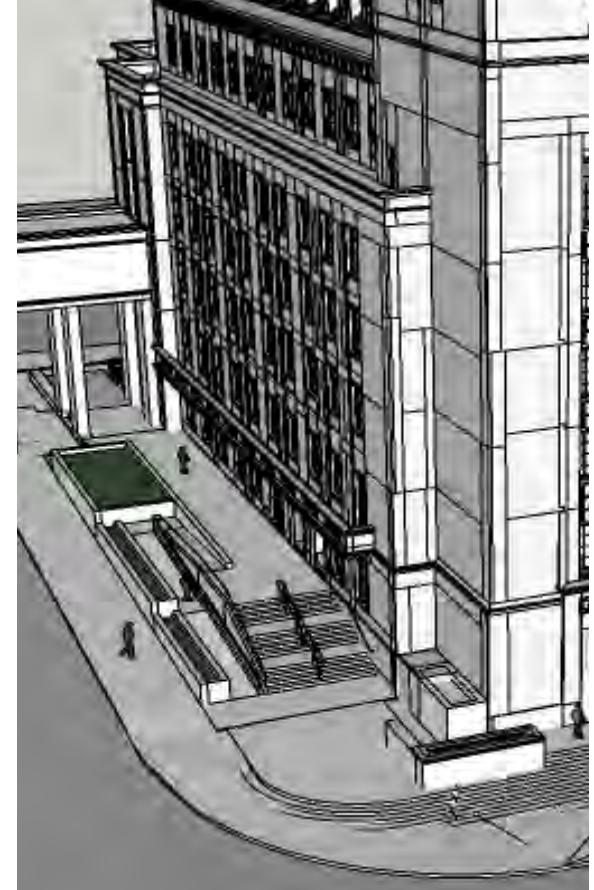


Sunken Scheme

Per NCC/FHBRO suggestion



Colonnade Scheme



Terrace Scheme

1. Entrance Design: 3 developed options

Deemed not acceptable due to security breach on ground level



Sunken Scheme

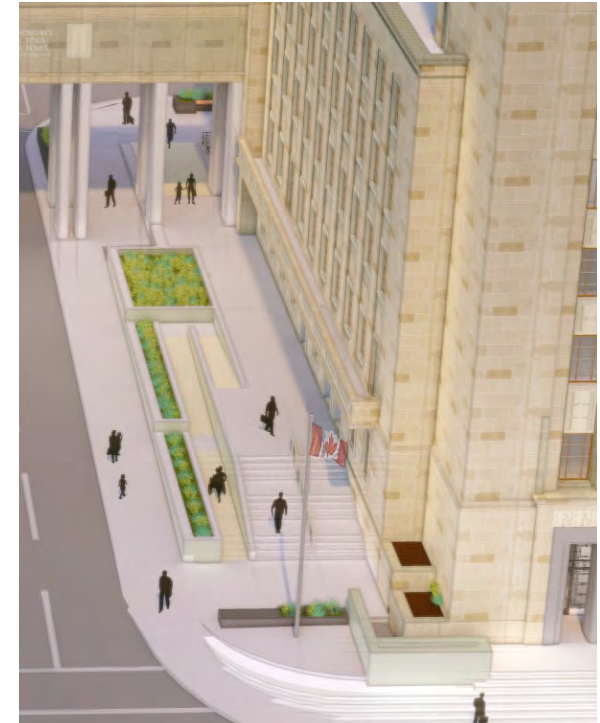
Per NCC/FHBRO suggestion

Deemed not desirable due to remote and concealed entrance



Colonnade Scheme

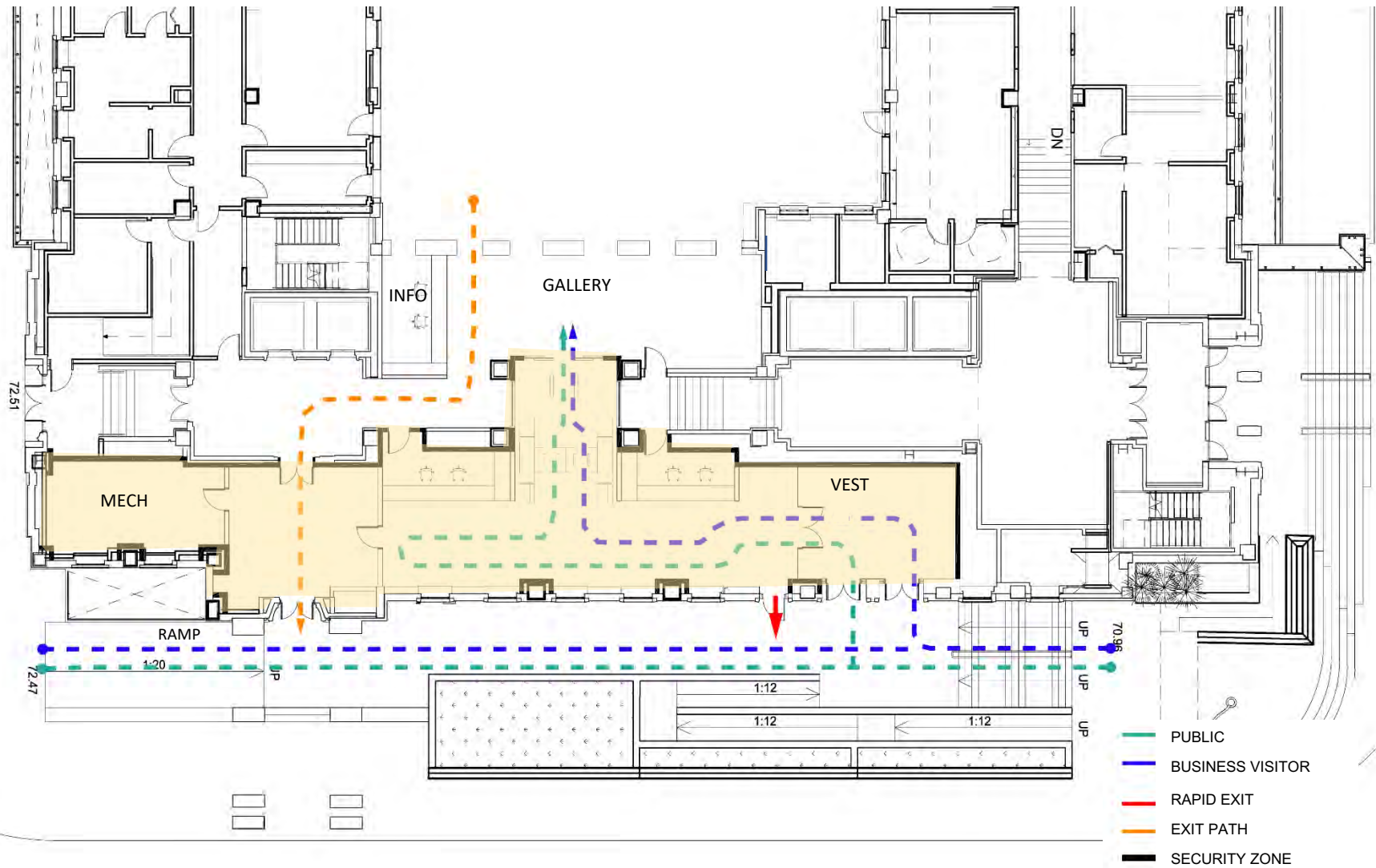
Preferred scheme as an alternate to the Visitor Entrance Pavilion



Terrace Scheme



1. Entrance Design: Terrace Scheme



1. Entrance Design: Terrace Scheme



2. Site Design: Site Context



Restrained Landscape Design



Interlocking Terraces at North-East corner

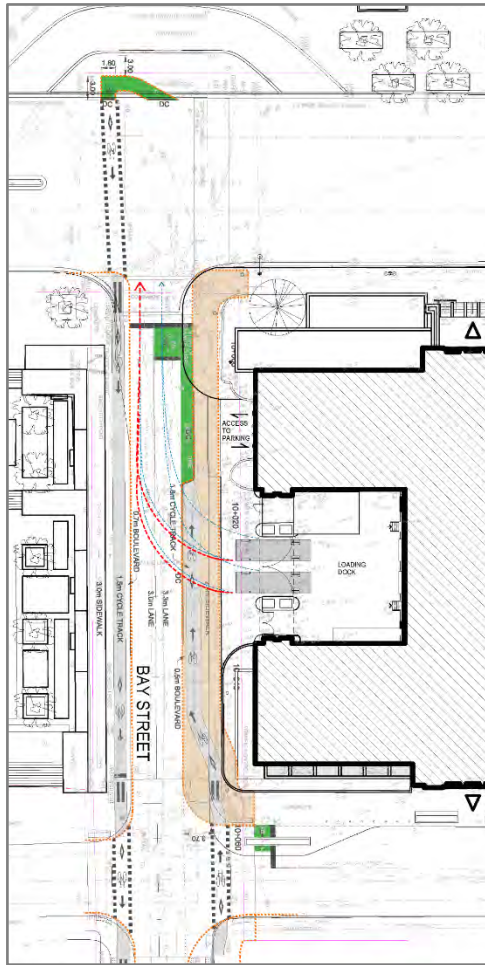


Stepped Massing and Soft Landscaping

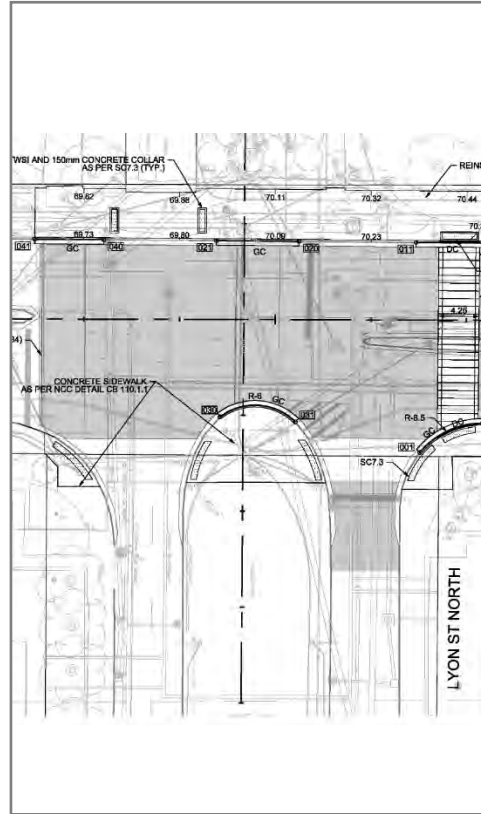


Direct Street Frontage on Sparks

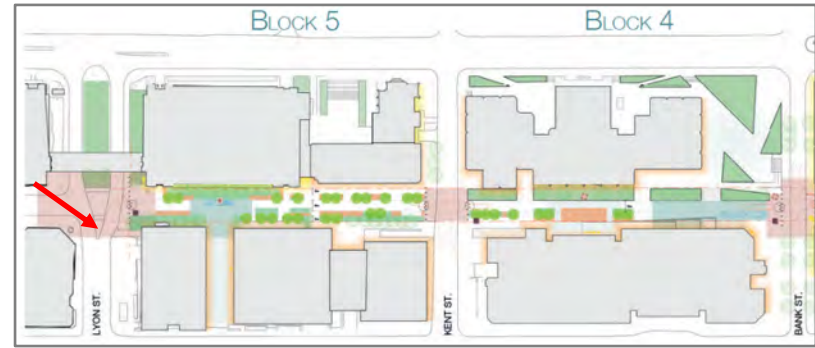
2. Site Design: Coordination with nearby City of Ottawa Projects



Bay street cycling facility:
Cycling lanes on both
sides of Bay
Summer 2019



Revised Cross walk at Wellington & Lyon Summer 2019



Sparks street Public Realm



Wellington street Resurfacing

2. Site Design: Site Design Objectives

1) Respect and enhance the heritage value *of the original landscape, including the formal and restrained treatments, low green groundcovers and interlocking terracing walls*

2) Maintain continuity of Confederation Boulevard *with respect to street treatments on Wellington Street and acknowledge the prominence of this North side of the building*

3) Acknowledge and respect the Memorial *aspects of the Colonnade & Lyon street*

4) Respect symmetry of Memorial Colonnade & EMB

5) Ensure all areas meet accessibility requirements

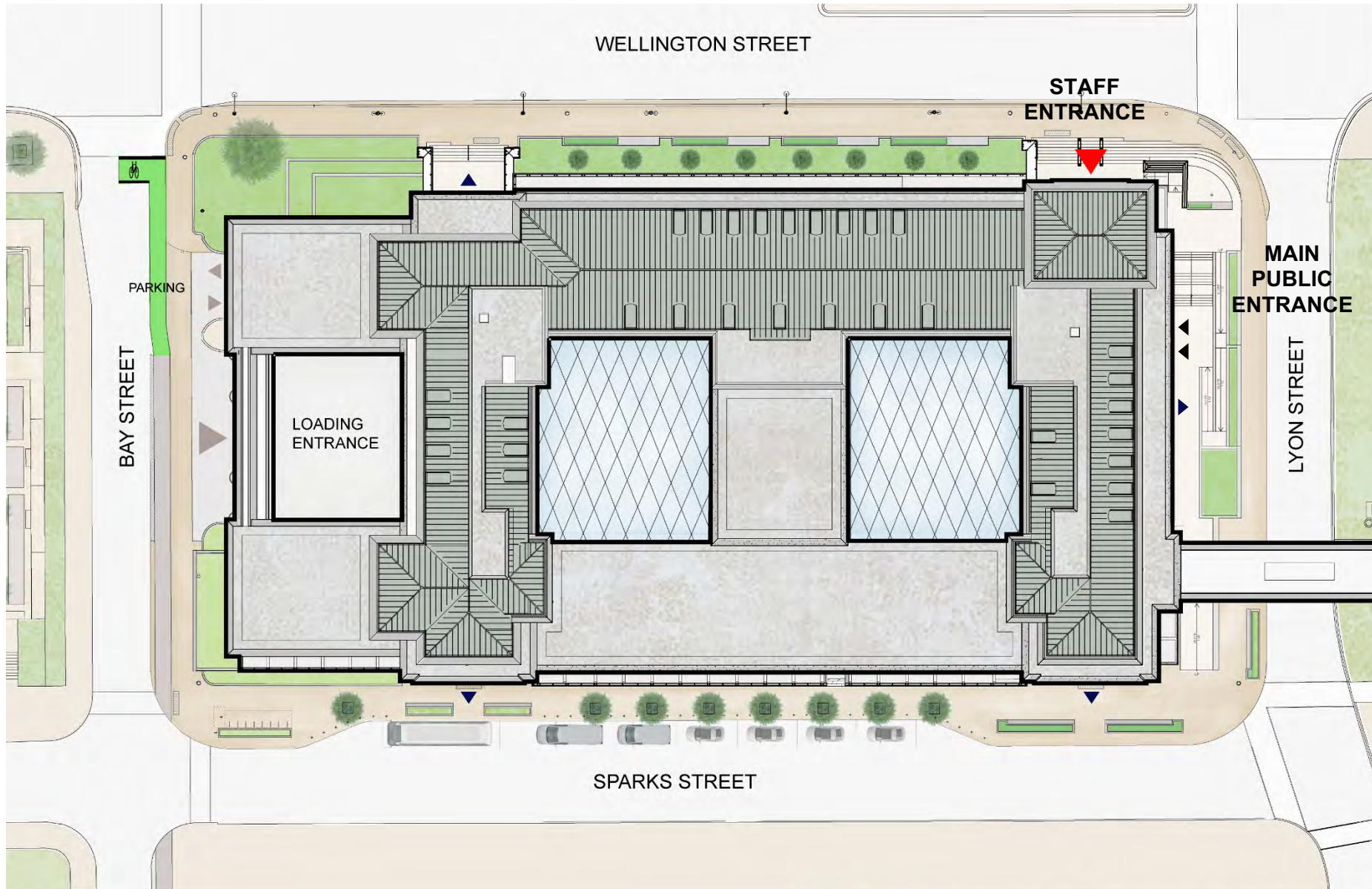
6) Provide areas for gathering of groups

7) Integrate security seamlessly *with the landscape features and street furniture*

8) Enhance the pedestrian experience on Sparks Street



2. Site Design: Site Plan



2. Site Design: Perspectives



View from Wellington Street



View from Bay Street








View from West

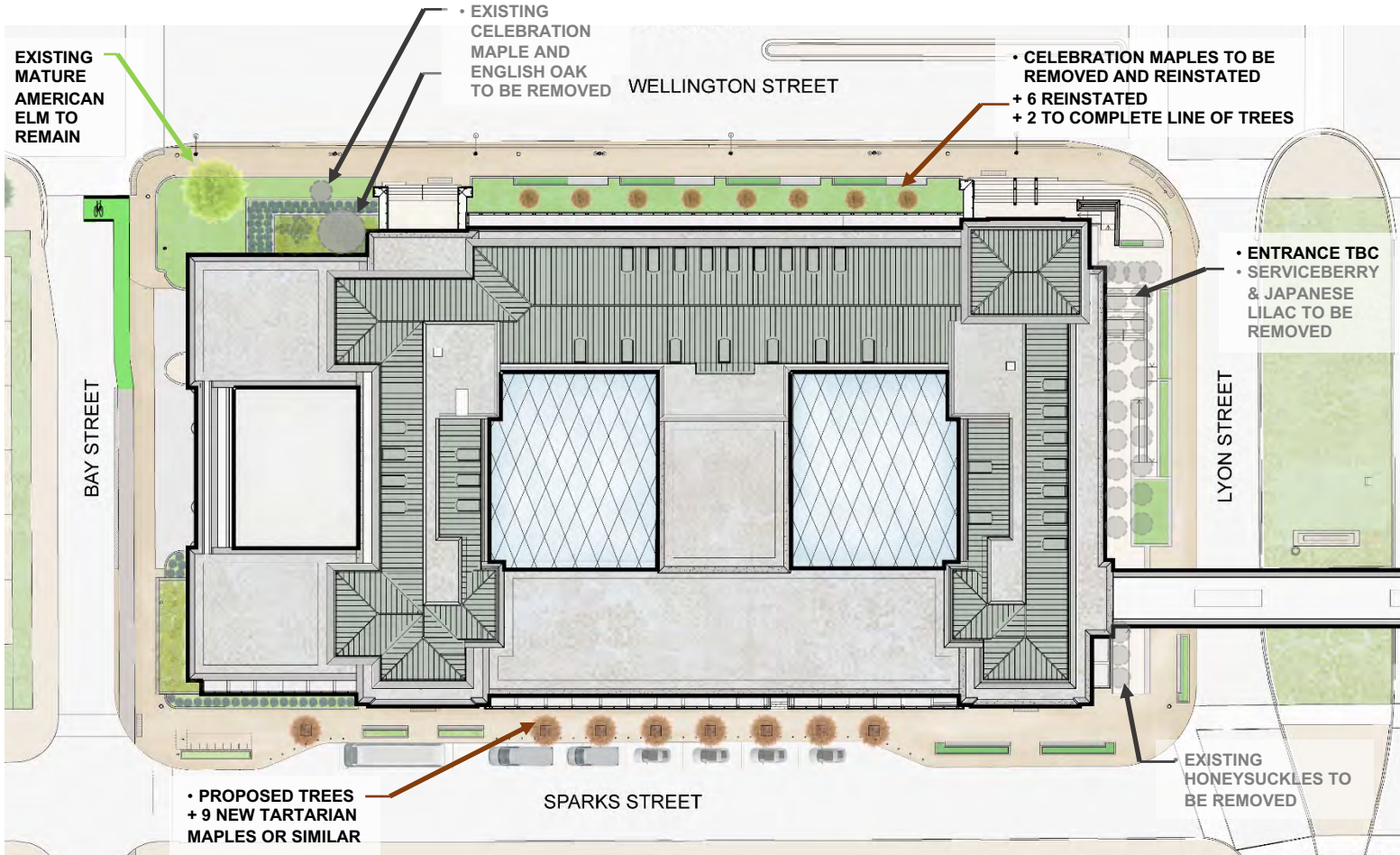


View from Sparks & Lyon Streets

2. Site Design: Landscape design

LEGEND:

-  CONCRETE SEAT WALL
-  EXISTING TREE
-  PROPOSED TREE
-  LOW GROUND COVERS
-  EXISTING TREE TO BE REMOVED



GROUND COVERS



BIKE RACKS



GRANITE/CONCRETE SEAT WALLS EXAMPLES

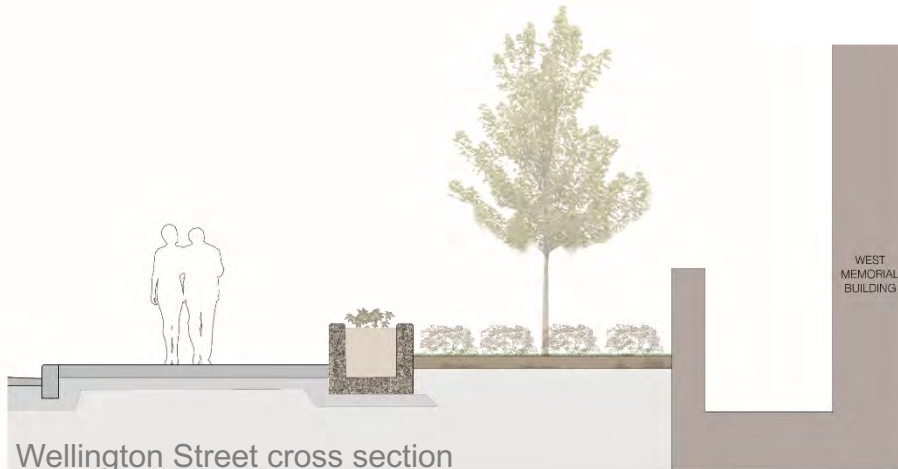


TREES

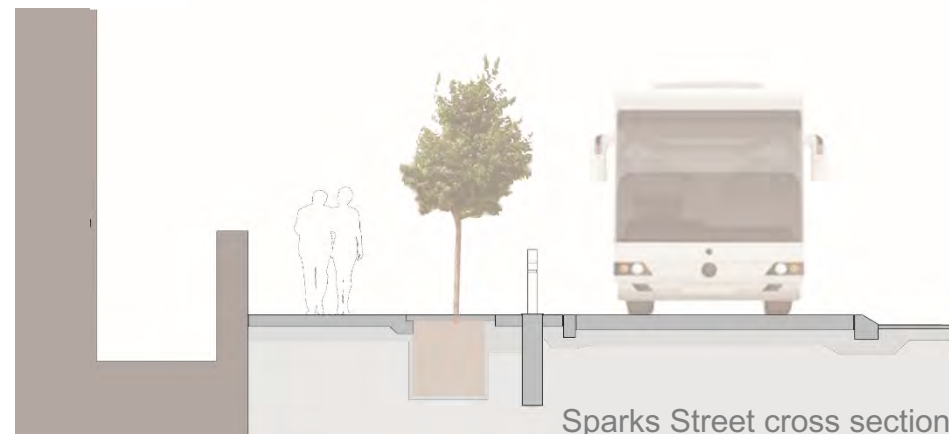
2. Site Design: Streetscape



Wellington Street elevation



Wellington Street cross section



Sparks Street cross section

2. Site Design: Night Lighting Design Concept

- EMB & Memorial Colonnade study initiated to look at the lighting strategy with the WMB



NORTH ELEVATION – WELLINGTON ST



WEST ELEVATION – BAY ST

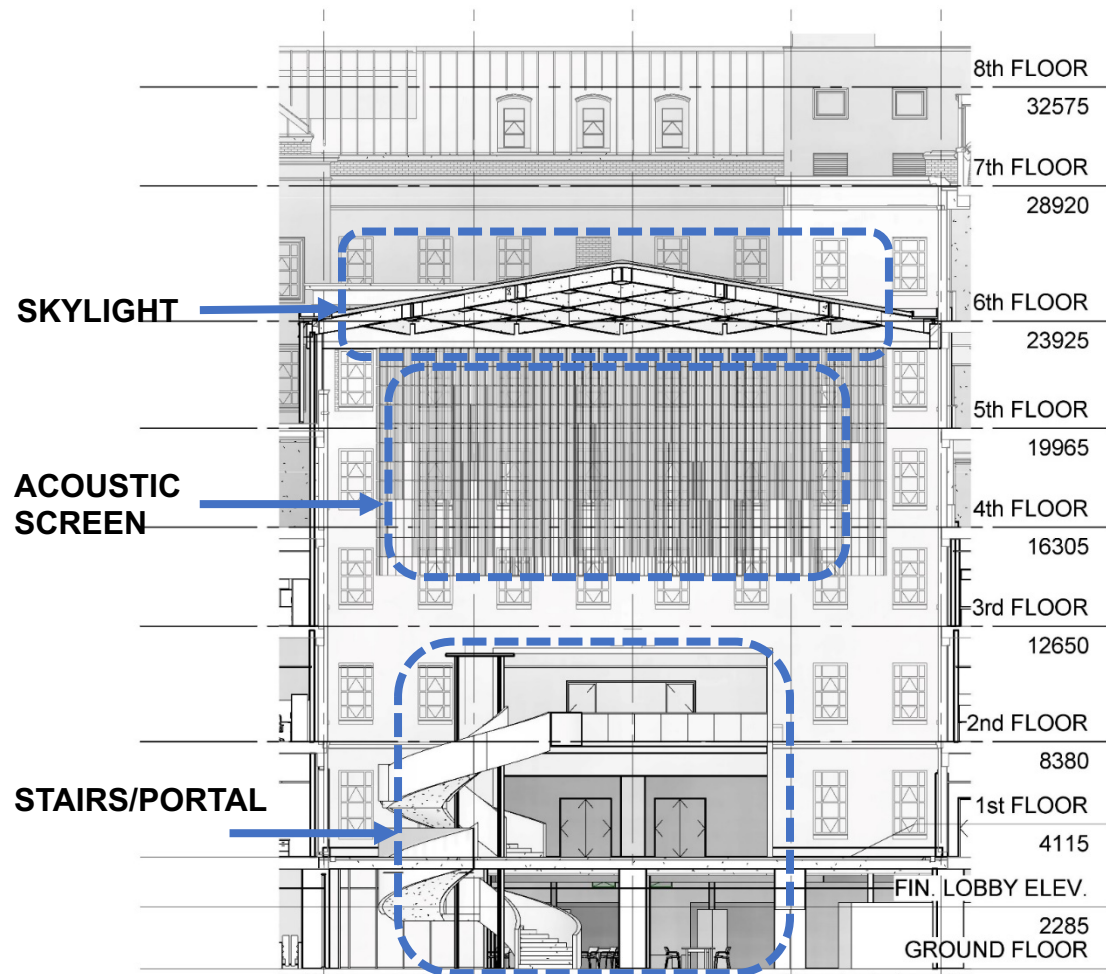


SOUTH ELEVATION – SPARKS ST

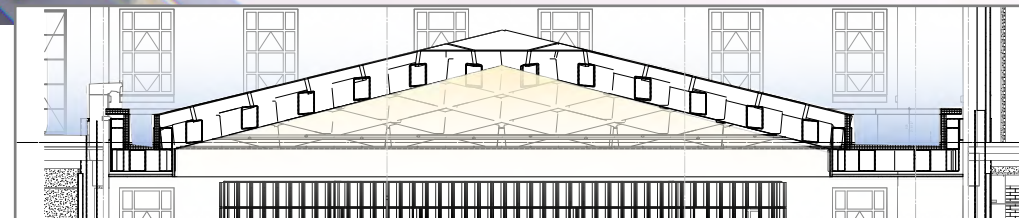
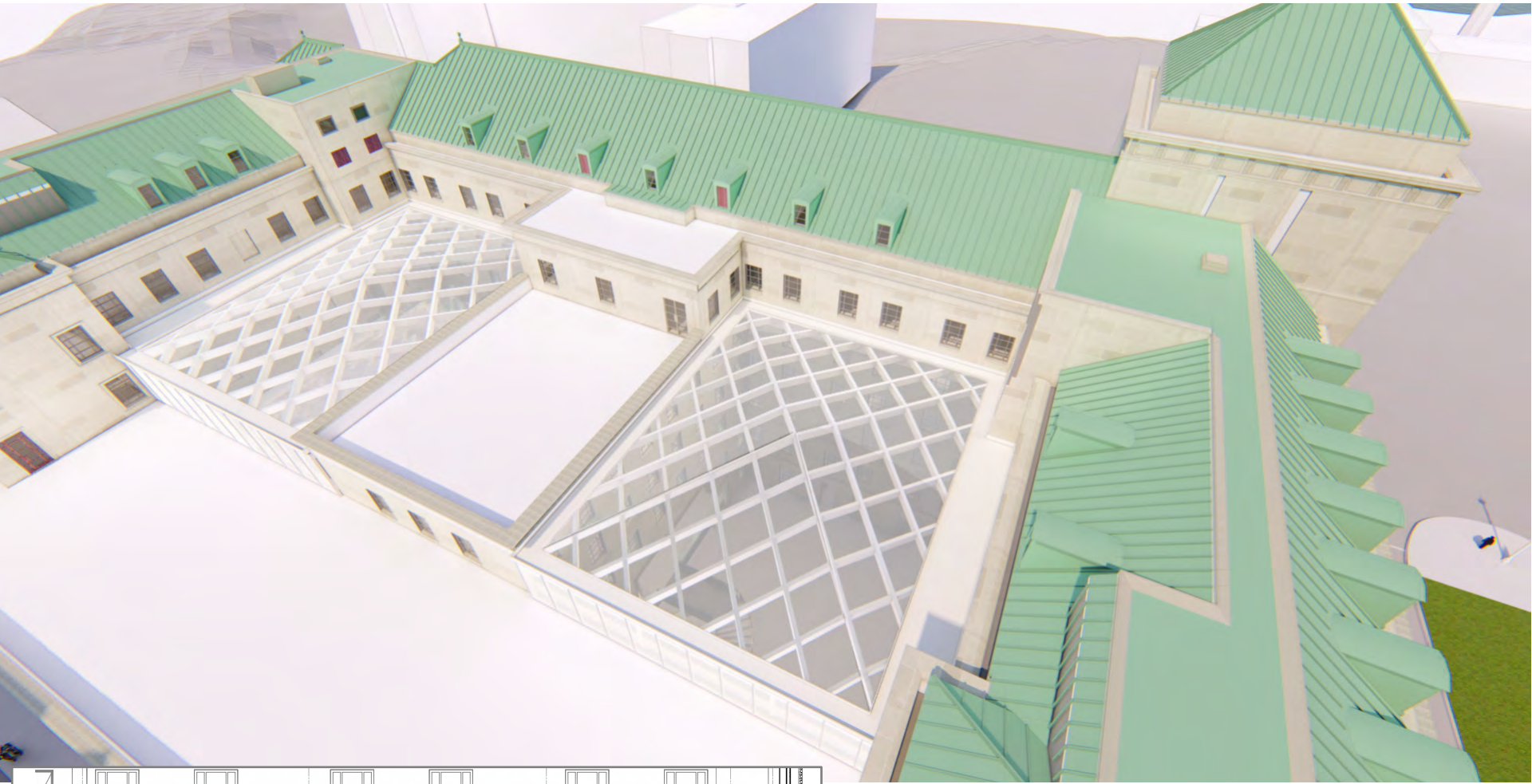


EAST ELEVATION – LYON ST

3. Grand Hall & Courts: Grand Hall – Section



3. Grand Hall & Courts: Skylight Design

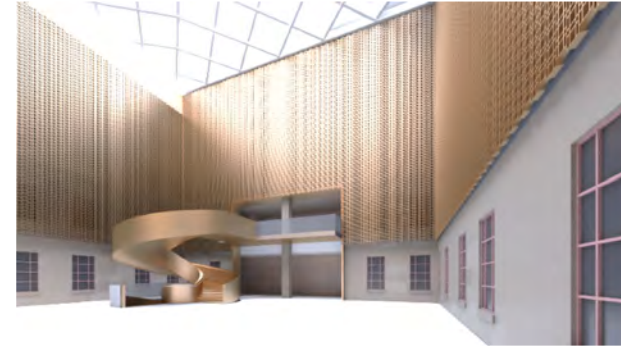


Cross section through skylight



3. Grand Hall & Courts: Grand Hall Acoustic Screen Study

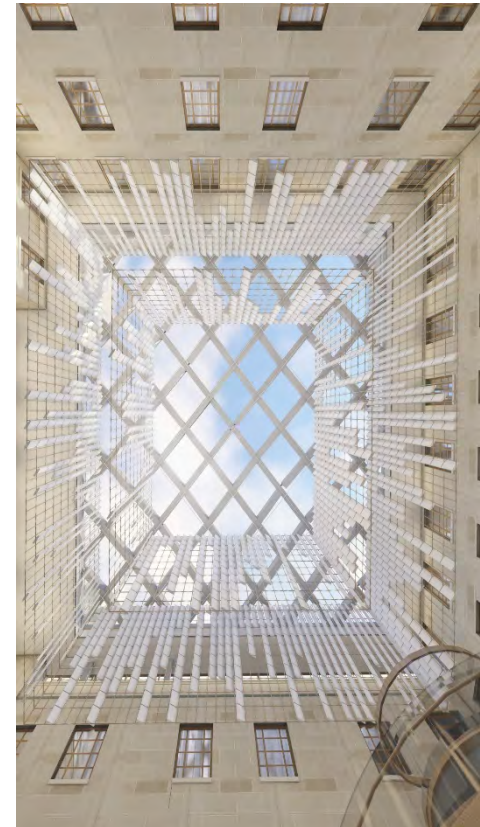
Concept Design Studies



Reverberation Time:

- Exemplar: New Senate Chamber at the GCC & House of Commons Chamber at the West Block : ~1.0 s
- Proposed Grand Hall with 1000 m² of acoustic material: 1.75 s - a more achievable goal in order to maintain functional use of Grand Hall for gatherings, lectures and events part of SCC Operations.

3. Grand Hall & Courts: Design



Proposed Scheme (1000m² acoustic material)

3. Grand Hall & Courts: Stair Design



3. Grand Hall & Courts: Supreme Court



3. Grand Hall & Courts: Federal Court

