

CC



CCN

National Capital Commission

Sixty-Sixth Annual Report
1965-1966

Part One

NCC



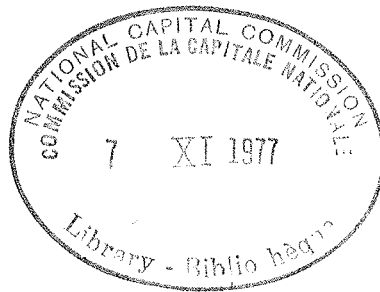
CCN



NATIONAL CAPITAL COMMISSION
OTTAWA

SIXTY-SIXTH ANNUAL REPORT

1965-1966



for the year 1 April 1965
to 31 March 1966

CONTENTS

	<i>Page</i>
Letter of Transmittal	1
Organization Chart	2
Members of National Capital Commission and Committees	3
The National Capital Commission	
Constitution - Composition - Objects and Purposes	6
Powers and Limitations - Meetings - The Committees	6
Changes in Membership - Staff Reorganization	8
Work Measurement Standards - N.C.C. Traffic and Property	
Regulations	9
General Program	9
Railway Relocation	
New Station Area	10
Prescott Subdivision Depression	10
Beachburg Subdivision	10
Bill S-2	11
Parks and Parkways	
Ottawa River Parkway (West)	11
Riverside Drive	11
Parks and Driveways	11
Gatineau Park	
Mackenzie King Domain	12
Lac Philippe	12
Lac LaPêche	13
Taylor Lake	13
Maintenance and Improvements	13
Downtown Redevelopment	
Confederation Square	13
LeBreton Flats	14
Design Co-ordination	
Project Design	14
Architectural Design	15
Landscape Architecture	15
Advisory Committee on Design	16
Regional Planning	
Co-operation with Other Authorities	16
Advice to Municipalities	17
Property Acquisition and Property Administration	
Property Acquisition	18
Industrial Lands	18
Property Administration	18
Land Committee	19
Integrated Survey Control	19
Public Information and Historic Sites	
Public Information Program	20
Historical Program	21
Summary of Report of Traffic Section, "A" Division,	
Royal Canadian Mounted Police	21

NATIONAL CAPITAL COMMISSION

Ottawa, Ontario
30 June, 1966.

The Honourable George J. McIlraith, P.C., Q.C., M.P.,
Minister of Public Works,
Ottawa, Ontario.

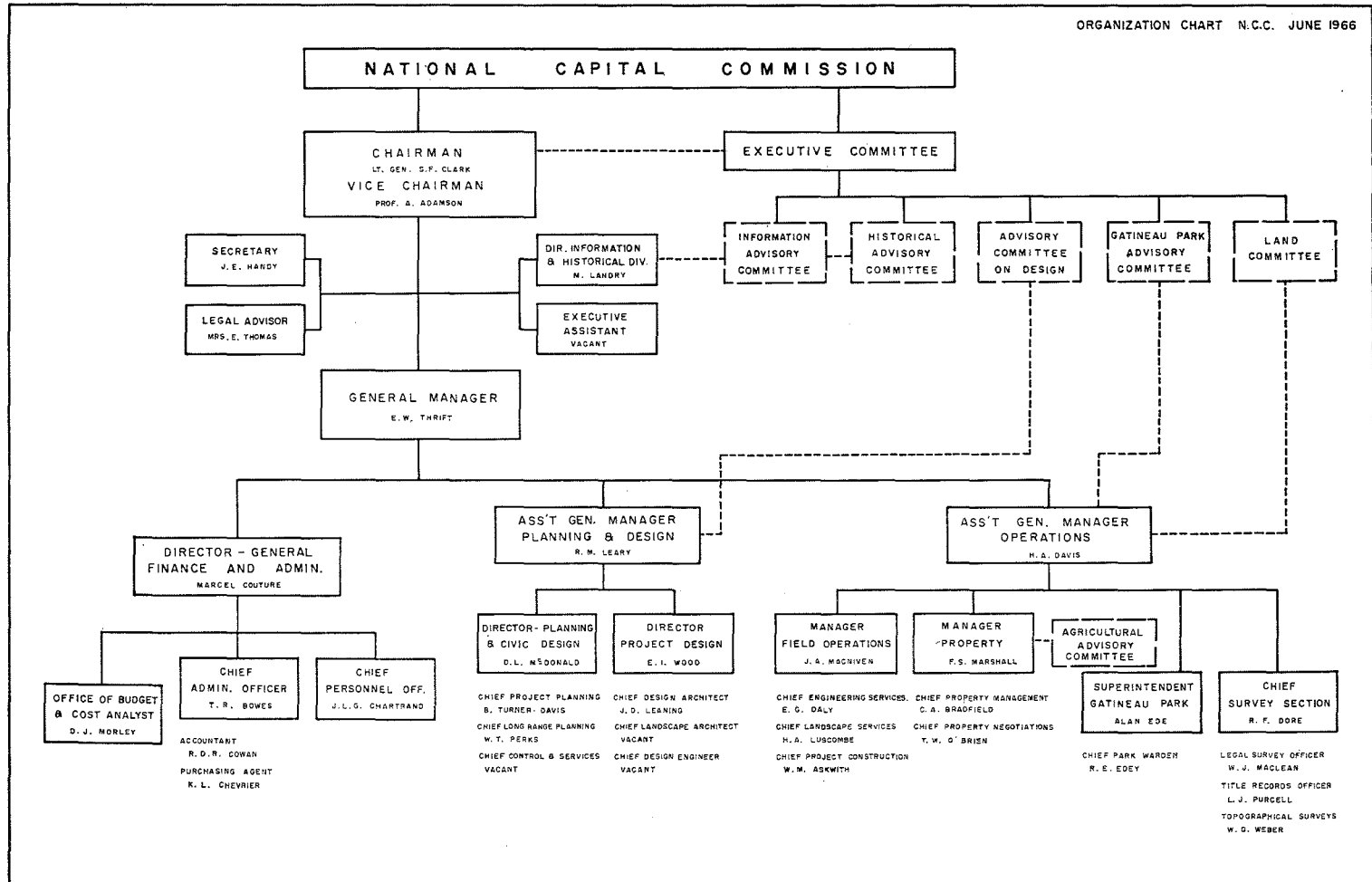
Dear Mr. Minister,

On behalf of the National Capital Commission, and in accordance with Section (85)3 of the Financial Administration Act, I have the honour to submit herewith Part I of the Annual Report of the National Capital Commission for the fiscal year ended 31 March 1966.

Part II which will include the financial statements of the Commission for the year 1965-66, and the report of the Auditor General of Canada, will be forwarded to you as soon as it becomes available.

Respectfully submitted,

(Sgd.) S. F. Clark, (Lt. Gen.)
Chairman.



NATIONAL CAPITAL COMMISSION

MINISTER RESPONSIBLE

The Honourable George J. McIlraith, P.C., Q.C., M.P.
Minister of Public Works

CHAIRMAN

Lt. Gen. S. F. Clark, C.B.E., C.D., B.Sc.(E.E.), B.Sc.(M.E.)
M.E.I.C., P.Eng., Ottawa

VICE-CHAIRMAN

Professor Anthony Adamson, M.A., F.R.A.I.C., M.T.P.I.C.
Toronto, Ontario

COMMISSIONERS

D'Arcy Audet, M.I.R.A.C., P.Q.A.A., O.A.A. Hull, Que.
*G. E. Beament, O.B.E., E.D., Q.C., B.A.Sc. Ottawa, Ont.
J. Eugène Bissonnette, M.D. Quebec City, Que.
Louis M. Bloomfield, Q.C., B.A., LL.M., LL.D. Montreal, Que.
Hans Geggie, B.A., M.D., C.M., D.A. Wakefield, Que.
*Mrs. Henry F. Gyles, B.A. Winnipeg, Man.
*John Leonard Haw, B.Sc. Calgary, Alta.
*J. C. Horwitz, Q.C., B.A., LL.B. Ottawa, Ont.
Charles H. Hulse Ottawa, Ont.
*F. F. Kemp, D.D.S. Richmond, Ont.
Major General Howard Kennedy, C.B.E.,
M.C., M.E.I.C. Rockcliffe, Ont.
Frank Martin, B.Sc., F.R.A.I.C., P.Eng. Saskatoon, Sask.
Auguste Martineau, M.I.R.A.C.,
P.Q.A.A., O.A.A. Ottawa, Ont.
*Miss S. Clyde McLellan Saint John, N.B.
Mrs. James P. Norrie, B.A. Truro, N.S.
*Richard Parkinson, Mayor of Kelowna Kelowna, B.C.
*Mrs. Robert E. Sutherland Charlottetown, P.E.I.
Walter Tucker, M.B.E., C.D., R.I.A.,
Mayor of Grand Falls Grand Falls, Nfld.

*Term of office expired on 5 February, 1966.

EXECUTIVE COMMITTEE (five members)

Lt. Gen. S. F. Clark, Chairman
Professor Anthony Adamson
D'Arcy Audet
Louis M. Bloomfield, Q.C.
J. C. Horwitz, Q.C. (until 5 February 1966)
Auguste Martineau (effective 6 February 1966)

ADVISORY COMMITTEES

LAND COMMITTEE (six members)

Lt. Gen. S. F. Clark, Chairman
A. Jack Frost
Alan K. Hay
Major General Howard Kennedy
J. N. Morin
P. S. Secord

ADVISORY COMMITTEE ON DESIGN (ten members)

Professor Anthony Adamson, Chairman
D'Arcy Audet
Jean Gareau
Macklin L. Hancock
Thomas Howarth
Jean Issalys
Jean-Louis Lalonde
Ian MacLennan
Hart Massey
J. W. Strutt

INFORMATION ADVISORY COMMITTEE (nine members)

J. C. Horwitz, Q.C., Chairman (until 5 February 1966)
Auguste Martineau, Chairman (from 6 February 1966)
Mrs. H. F. Gyles (until 5 February 1966)
Miss S. Clyde McLellan (until 5 February 1966)
Louis M. Bloomfield, Q.C.
C. H. Hulse
F. R. Crawley
D'Arcy Audet
Lt. Gen. S. F. Clark (ex officio)
Professor Anthony Adamson (ex officio)
(2 vacancies)

HISTORICAL ADVISORY COMMITTEE (twenty members)

Professor Anthony Adamson, Chairman
Dr. J. E. Bissonnette
Louis M. Bloomfield, Q.C.
Mrs. F. R. Crawley
Egide Dandenault
David Farr
W. E. Fancott
Rev. Father Maurice Gobeil
W. E. D. Halliday
Dr. R. H. Hubbard
Dr. W. K. Lamb
Marc Laterreur
Dr. R. F. Legget
M. M. Maclean
Eric W. Morse
Augustin Potvin
A. J. H. Richardson
Donald Ritchie
The President of the Ottawa Historical Society
(One Vacancy)

GATINEAU PARK ADVISORY COMMITTEE (five members)

D'Arcy Audet, Chairman
G. E. Beament, Q.C.
Dr. Hans Geggie
Aimé Guertin
Dr. F. F. Kemp

NATIONAL CAPITAL COMMISSION

Constitution

The National Capital Commission is a Crown Corporation, successor to the Ottawa Improvement Commission (1899-1927) and to the Federal District Commission (1927-1959). It operates under powers set out in the "National Capital Act", an Act respecting the Development and Improvement of the National Capital Region — 7 Elizabeth II, Chapter 37 — which received assent 6 September 1958 and was proclaimed 6 February 1959.

Composition

The twenty Commissioners of the National Capital Commission are appointed by the Governor-in-Council and hold office during pleasure for a maximum of two consecutive four-year terms. The members, in addition to the Chairman and Vice-Chairman, include at least one representative from each of the provinces, at least two from the City of Ottawa, at least one from the City of Hull, and at least one member from a local municipality in Ontario and Quebec respectively, other than the cities of Ottawa and Hull.

The Commission must hold a minimum of three meetings a year in Ottawa. These meetings are presided over by the Chairman, who is the chief executive officer of the Commission, or, in his absence, by the Vice-Chairman. Both the Chairman and Vice-Chairman are designated by the Governor-in-Council.

Objects and Purposes

The objects and purposes of the Commission, as defined by the National Capital Act, are "to prepare plans for and assist in the development, conservation and improvement of the National Capital Region in order that the nature and character of the seat of the Government of Canada may be in accordance with its national significance."

One of the Commission's more important roles is that of a co-ordinating agency in the development of public lands in the National Capital Region. This area consists of approximately 1800 square miles with 71 local governmental authorities located in the provinces of Ontario and Quebec.

Powers and Limitations

The Commission operates within the closely prescribed limits of the National Capital Act, the Financial Administration Act and various government directives.

Within these limits it has the power to: acquire and develop property; construct and maintain parks, roads, bridges and other public works; undertake joint projects with municipalities or make grants to municipalities; construct and operate concessions, and administer historic buildings.

All National Capital Commission plans and expenditures must receive government approval. Financial expenditures and the contracts necessary to carry out projects are closely scrutinized by the Treasury Board.

Approval of the Governor-in-Council, through Treasury Board, is required before the Commission: expropriates property (Section 13 of the National Capital Act); acquires property valued over \$25,000 (Section 14); disposes of property valued over \$10,000 (Section 14); leases property for a time in excess of five years (Section 14), and undertakes construction projects, makes grants or shares the cost of projects, which are financed out of the National Capital Fund (Section 16). The approval of the Treasury Board is also required to award major contracts.

Meetings

Three meetings were held by the National Capital Commission during the fiscal year. The Commission was assisted during this time by the Executive Committee, the Land Committee and the Design, Information, Historical and Gatineau Park advisory committees.

The Committees

The **Executive Committee** is composed of the Chairman, the Vice-Chairman and three other members of the Commission, one of whom shall be from the Province of Quebec. The latter three are appointed by the Commission. This Committee meets about once a month to carry out its duties, including authorization of the acquisition of property or an interest therein.

Five advisory committees assist the Executive Committee and the Commission as a whole.

The **Land Committee** is headed by the Chairman of the Commission, Lt. Gen. S. F. Clark, and comprises six experts in matters of property evaluation. The function of the Committee, which meets about once a month, is to advise the Commission in matters of land acquisition and to recommend policy respecting property administration.

The **Advisory Committee on Design** is headed by the Vice-Chairman of the Commission, Professor Anthony Adamson, Associate Professor of Town Planning at the School of Architecture, University of Toronto. This Committee is composed of ten prominent Canadian architects, planners and landscape architects who advise the Commission on the external appearance of buildings erected on federal properties in the National Capital Region, as well as site-planning and landscaping.

The **Information Advisory Committee** consisting of nine members, meets approximately three times a year under the chairmanship of a member of the Commission. This Committee considers all matters affecting the information and public relations aspects of the Commission and makes appropriate recommendations.

The **Historical Advisory Committee** is headed by the Vice-Chairman of the Commission. It is composed of twenty experts in the local history of the National Capital Region and is responsible for recommendations concerning the marking, preservation and interpretation of buildings and sites of historic interest. This Committee meets approximately three times a year.

The **Gatineau Park Advisory Committee** composed of five members is headed by a member of the Executive Committee. This Committee advises on the development, improvement and administration of Gatineau Park, and meets approximately four times a year.

Changes in Membership

The Commission wishes to express its appreciation to the eight members whose terms of office expired on 5 February, 1966. They are:

Mr. G. E. Beament, Q.C., member from the City of Ottawa since 21 December, 1960;

Mrs. Henry F. Gyles, of Winnipeg, member from the Province of Manitoba since 6 December, 1960;

Mr. John Leonard Haw, of Calgary, member from the Province of Alberta since 17 April, 1962;

Mr. J. C. Horwitz, Q.C., member from the City of Ottawa since 6 February, 1959;

Dr. F. F. Kemp, of Richmond, member from the Province of Ontario since 6 February, 1963;

Miss S. Clyde McLellan of Saint John, member from the Province of New Brunswick since 6 February, 1959;

Mr. Richard Parkinson, Mayor of Kelowna, member from the Province of British Columbia since 6 February, 1963;

Mrs. Robert E. Sutherland, of Charlottetown, member from the Province of Prince Edward Island since 21 December, 1960.

Staff Reorganization

A firm of management consultants was engaged to study and make recommendations about the organization structure, management systems and operating methods of the Commission. It proposed that the Commission's staff be divided into four main elements: An Executive Office reporting to the Chairman, a Planning and Design Branch, an Operations Branch, and a Finance and Administration Branch. The latter three would report to the General Manager.

In October 1965, the Governor General in Council, on the recommendation of the Minister of Public Works and the National Capital Commission, approved an amendment to the plan of organization to provide for this arrangement.

It was intended also that the staff would be strengthened, particularly at the senior management level and that program budgeting and better management reporting and control systems would be adopted. The chart on page 2 illustrates the new organization structure. This plan is being implemented as rapidly as circumstances and new staff will permit.

Work Measurement Standards

The overall efficiency of the Commission's activities has been increased by further progress in the program for development of work measurement standards.

The accurate information gained from this program is to be used by management in both day-to-day planning and control of operations and construction activities as well as in the development of long-term plans and budgets. Benefits derived from the program may be expected to increase significantly in the near future as more numerous and varied applications of the work standards are developed.

NCC Traffic and Property Regulations

On 19 January 1966, the Governor General in Council, on the recommendation of the Minister of Public Works and the National Capital Commission, was pleased to amend the N.C.C. Traffic and Property Regulations to permit a person operating a taxicab to travel on any bridge under the administration and control of the Commission that is designed or intended for vehicular traffic, if the person operating that taxicab enters and leaves the approaches to the bridge by the nearest intersecting municipal street.

Regulations permitting taxicabs carrying passengers to make full use of all N.C.C. parkways and driveways remain unchanged. The Commission is anxious that everyone and particularly visitors to the Capital, derive the maximum benefit from these scenic drives.

General Program

This year, as in the past, the Commission continued to carry out a vigorous, well-rounded program of projects and activities designed to enhance the National Capital Region and encourage realization of its finest potential. This program is carried out on many levels and involves planning, engineering, construction, maintenance, landscape development and property acquisition as well as administration. The following sections summarize the main areas of progress.

RAILWAY RELOCATION

New Station Area

Substantial progress towards completion of the railway relocation program was made during the year. One of the most notable aspects of this progress was the awarding in February, 1965, of the contract for construction of the new railway station at Hurdman. Completion of this building is expected by July 1966.

Other contracts awarded during the year included those for the boiler plant and car repair building, the CN-CP merchandising terminals and the relocation of streets and roadways to accommodate the new station and the postal terminal building.

The CN-CP telecommunications building was completed during the year and the railway companies began installing equipment.

N.C.C. forces continued to relocate tracks throughout the area with the major part of the time being spent on the new station at Hurdman and at the Walkley Yard where a marshalling yard is under construction for the CPR. In this connection a contract was let for extension of the existing diesel repair building to accommodate the CPR.

Prescott Subdivision Depression

Progress on the lowering of the CPR Prescott Subdivision tracks between the Ottawa and Rideau rivers was marked this year by completion of one major section and awarding of the contract for the third stage of the work.

The first and second stages of the project to be completed include the Dow's Lake tunnel and open cut as far as Beech Street and involves overpasses at Prince of Wales Drive, Carling Avenue and Beech Street. The third stage will carry construction to Somerset Street. Also included in this latter project is the Mooney's Bay sanitary sewer and the western interceptor storm sewer. The cost of this sewer project is being shared with the City of Ottawa.

Negotiations were carried out by the Commission with owners of properties adjoining the right-of-way and with industries whose rail service is affected by the project. Although most of these industries have been satisfied with interim and final arrangements for service, some further claims may be made.

Beachburg Subdivision

A firm of consulting engineers was retained by the City of Ottawa to determine the feasibility and cost of removing the Beachburg Subdivision from Wass Junction to Hurdman. The City of Ottawa and the N.C.C. share equally the cost of the study. The report of the consulting engineers has not yet been received.

Bill S-2

This Bill, "an Act to incorporate the Ottawa Terminal Railway Company" was passed by the Senate on March 1, 1966, and has now been presented to the Commons.

PARKS AND PARKWAYS

Ottawa River Parkway (west)

Work on this attractive scenic route along the shore of the Ottawa River was continued this year at both eastern and western extremities. In the east, the emphasis was on completion of grading at the Parkdale Interchange. In the west, a further three-quarters of a mile of grading was completed.

The Nepean Bay area of the parkway at the eastern end of the route continues to be constructed from free fill removed from various excavations in the city including the Prescott Subdivision depression.

Landscaping of the parkway included establishment of turf areas, construction of a riverside pedestrian pathway and provision of benches in the area between Churchill and Woodroffe avenues. In addition, several hundred flowering shrubs and some 300 coniferous and deciduous trees were planted along the roadside.

Riverside Drive

Work on this joint project of the N.C.C. and the City of Ottawa this year consisted of reconstruction of the Drive between Smyth Road and Pleasant Park Road. The Commission carried out side-grading in preparation for spring seeding and laying of sod.

Parks and Driveways

A firm of consulting engineers was engaged to prepare an engineering study for the Eastern Parkway between the Montreal Road and the Rideau River.

The Driveway between Fifth Avenue and Pretoria Bridge was improved by the installation of new curbs and pavement and new landscaping.

Filling, grading and seeding operations continued along the Rideau River. The marshy and partially flooded area south of Colonel By Drive and west of Bronson Avenue is being filled gradually and graded. Work on the area between Hurdman and Cummings bridges will be completed next season when nine acres of turf will have been established.

Extensive tree and shrub planting and turf seeding was carried out on the approaches to the new Macdonald-Cartier Bridge and surrounding area, along Sussex Drive on the site of the former Laurentian Terrace and in the Stanley Avenue - John Street area.

The rehabilitation of Fontaine Park in Hull continued with the laying of a mat of timber over which fill was placed to raise the level of part of the park. Operations on land between Fournier Boulevard and the Ottawa River included cleaning, grading and seeding.

The Commission continued to maintain lands along the Queensway as it has since the opening of this traffic artery. An important feature of this work is the replacing of turf with trees and shrubs on sloping areas adjoining the road. These shrubs are expected to reduce traffic noise as well as the cost of maintenance after they have grown sufficiently to replace the grass.

Another facet of the Commission's landscaping operations is the Dutch Elm disease identification program being carried out in conjunction with the City of Ottawa. This year, there does not appear to be any significant increase in the number of diseased trees on Commission property.

GATINEAU PARK

The Gatineau Park, an area of over 88,000 acres, of which approximately 4,700 acres consist of lakes, rivers and streams, is one of the Commission's important responsibilities. It is administered by a Superintendent, Chief Park Warden, Clerk of Works and a small force of wardens and caretakers.

The Commission now owns 65,700 acres of the property within the boundaries of the Park and has been negotiating with the Province of Quebec to acquire the land owned by the Province within the boundaries of the Park.

The significance of the Gatineau Park in the Commission's plans for development of the National Capital Region is best appreciated from estimates of the number of people who visit the area annually. Last year an estimated 1,117,000 persons entered the Park.

Mackenzie King Domain

One of the popular features of the Park is the former summer residence of the late Prime Minister W. L. Mackenzie King, known as "Moorside", with its spacious lawns, wooded trails and historic ruins. More than 100,000 persons from many countries toured the grounds last year. Some 23,000 persons visited the museum and tea-room at Moorside operated by the Historical Society of the Gatineau.

Lac Philippe

During the year, a new water system was installed at Breton Beach to supply drinking fountains, concessions and toilets. New kitchen shelter buildings were built at each of the four group campsites. There are now 260 campsites at Lac Philippe.

Lac LaPêche

This area is growing more popular each year although access is, as yet, limited to a narrow municipal road. The sand beach on the east side of Lac LaPêche promises to be the best in the Park when fully developed by the Commission. Each year there is a considerable increase in the number of people fishing in this lake.

Taylor Lake

A new wilderness camping area with twenty campsites on the shores of Taylor Lake was opened this year.

Maintenance and Improvements

Preparations continue for the fish re-stocking program to be carried out in co-operation with the Canadian Wild Life Service of the Department of Northern Affairs. Some lakes have been closed to fishing with the consent of the Province of Quebec.

The reforestation program is now in its sixth season. During the year, 172,000 seedlings were planted at the outlets of Renaud, Pinks and Dennison lakes.

Trainees from the Gatineau Correctional Camp continued to assist with maintenance in the Park, including the work of clearing trails.

Grants in lieu of taxes paid to local municipalities during 1965 approximated \$60,000.

It was decided to restrict the operation of motorized snow vehicles to a specific area of the Park. About 22 miles of cleared trails are available for this sport.

DOWNTOWN REDEVELOPMENT

Improvement and renewal of the downtown area of the City of Ottawa, and particularly that region immediately adjacent to the Parliament Buildings, has become in recent years of serious concern to the Commission.

Two major civic design projects have been under detailed study and planning by the Commission and consultants. This year, both the Confederation Square and LeBreton Flats projects have shown the results of this planning with some very active construction developments.

Confederation Square

The National Arts Centre and a new Driveway along the east side of the Rideau Canal with connections to the Queensway and Colonel By Drive are two features of the plans for this area immediately south of the Parliament Buildings and the War Memorial which will be completed in the near future. Construction of the National Arts Centre is underway. When the new railway station at Hurdman is opened, the railway tracks will be removed and work will begin on the new Driveway which should be completed before the Centennial of Confederation.

Other elements of the plan for the Confederation Square area include a convention centre, hotel, government and private office buildings and other commercial uses.

In the summer of 1965, the Commission was authorized by the Government to acquire additional land required to carry out these plans. The land, 1.6 acres, is bounded by Rideau, Mosgrove, Besserer and Little Sussex streets, and lies immediately east of the Union station. Refinements to the long-range plan were made in the light of the acquisition of this land on Rideau Street and the proposals contained in the Ottawa-Hull Area Transportation Study.

LeBreton Flats

Progress on redevelopment of the LeBreton Flats area has proceeded this year on several fronts. Most of the buildings have been demolished and considerable progress has been made in the construction of the Ottawa River Parkway through this area. The parkway should be finished by the Centennial of Confederation. Many thousands of tons of free fill have been stored in order to regrade low parts of the site.

In the design phase of the project, preliminary plans have been made for the construction of the first major building group, a new headquarters for the Department of National Defence. Other plans have been prepared outlining traffic circulation and re-arrangement of services and utilities.

The traffic circulation plan takes into account recommendations in the Ottawa-Hull Area Transportation Study and provides for public transit routes, terminals and parking structures. Some access to the area will be provided via the Ottawa River Parkway which will connect with Wellington Street.

DESIGN CO-ORDINATION

Projects such as the development of Confederation Square and the renewal of the LeBreton Flats area represent only a portion of the Commission's design co-ordination program. All work of this nature is now carried out by a Project Design Division which co-ordinates architectural, landscaping and engineering design activities. The recent re-organization of the Commission staff along these lines has afforded an opportunity for improvement in design co-ordination.

Project Design

Plans for Confederation Square were revised so that an attractive scheme could be created for the Centennial Year celebrations.

For these celebrations, the Commission has prepared plans for interim measures including renovation of building façades on the west side of Elgin Street, between Sparks and Queen streets, realignment of traffic around Confederation Square, and landscaping the site of the present Union Station

and adjacent railway areas. More permanent developments are planned for later years.

Another design co-ordination project has been the preparation of proposals for improvement and standardization of street lighting and other fixtures as well as removal of some overhead wiring.

A challenging area that has come under study by the Design Division is the sector between the Parkdale Interchange of the Ottawa River Parkway and the point where the Parkway will connect with Wellington Street at the National Library.

In addition to the area known as the Flats, this section includes the rocky area of Lazy Bay, Nepean Bay, the terraces of the National Library and the Garden of the Provinces. The design of four bridge structures, the moulding of vast quantities of fill into rolling landscaped grounds along the Parkway and the interim treatment of the Flats have constituted a design challenge which must be met by the middle of 1967.

Architectural Design

In cooperation with the architects for the new railway station at Hurdman, the Commission has prepared plans for the complete development of the area surrounding the new station. These plans include ancillary buildings for railway use, roads, bridges, rail lines and landscaping.

Restoration and rehabilitation of some buildings of the National Capital Commission continued during the year, including further application of the colour co-ordination scheme. One of the more notable of the restoration projects involved the "Shipyard Building" in Jacques-Cartier Park, Hull, P.Q., where an Ottawa River Museum was established.

During the year, the Commission's chief design architect, Mr. John D. Leaning, received a design award from the Ontario Association of Architects for the design of the new N.C.C. information offices at 531 Sussex Drive. Last year, Mr. Leaning received a similar award for the design of the Sussex Drive building renovation project.

Landscape Architecture

The landscape architectural staff prepared designs for a wide range of projects throughout the Region.

Major landscaping projects included the Ottawa River Parkway, the Queensway, the future site for the External Affairs Building and approaches to the Macdonald-Cartier Bridge.

Other projects designed and implemented in whole or in part included: Sussex-Stanley Street Park; Canadian Broadcasting Corporation Headquarters planting; improvements to Gatineau Park, including "The Farm" at Kingsmere; National Research Council, Research Headquarters forecourt and fountain, and the Administration Building plantings and walls;

Hull Shipyard Building outdoor display terrace; Cartier Square, Department of National Defence parking areas; Tunney's Pasture — National Health and Welfare, Food and Drug Laboratory and Environmental Research Laboratory sites; Sir Charles Tupper Building; Records Center; Uplands Building U-90, site improvements; Echo Drive plantings and general improvements to Hull parks, Vincent Massey and Hog's Back parks and tulip plantations throughout the Capital.

Designs were also produced for the relocation of Rideau Falls Dam; Bate Island restoration program; lighting and services plan for the 54th Interparliamentary Conference reception at Kingsmere.

Landscape architects also assisted in the co-ordination of the design work by consultants for the Department of Mines and Technical Surveys site, Corktown Road; Confederation Square landscape plans; new Railway Station site and Heron Road bridge approaches.

In the spring of 1966, when it was decided that construction of extensions to the Bank of Canada building were to be delayed, the Commission's landscape architects designed a small park to occupy the site of the proposed western extension on Wellington Street. The design was prepared in consultation with officials of the Bank and carried out by N.C.C. construction forces. It was the wish of the Bank because of the delay in construction, that the site be improved so as not to detract from the appearance of Wellington Street during 1967.

Advisory Committee on Design

The Advisory Committee on Design met thirteen times this year and considered more than a hundred separate proposals. This Committee is assisted by the Commission's Project Design, and Planning and Civic Design staff.

Among the most important items considered by the Committee were: the National Arts Centre, the Ottawa Postal Terminal, construction at Tunney's Pasture and at the Experimental Farm, National Research Council structures laboratory at Uplands Airport, and buildings for N.C.C. industrial areas at Coventry, Belfast and Sheffield roads.

REGIONAL PLANNING

Co-operation with Other Authorities

The Commission attempts to influence long range planning throughout the Region by assisting municipalities in planning, and by conducting related investigations and research projects. Such long range planning assistance is limited by available resources.

During the year, the Commission has continued research into numerous aspects of future development, relying heavily on outside advisers. The "Economic Prospects" report prepared by economic and real estate consultants led to detailed projections of land use, population and employment data contained in the "Statistical Review". These publications have been of great assistance in planning work being carried out both in the Ontario and Quebec parts of the Region.

The National Capital Commission and the Central Mortgage and Housing Corporation jointly engaged consultants to study and make recommendations regarding developments outside the Greenbelt in the National Capital Region in Ontario. When completed, this study should assist the municipalities, the Province of Ontario in long range planning for this area as well as the National Capital Commission and the Central Mortgage and Housing Corporation in regard to their activities and responsibilities in the area under study.

During the year, meetings were held with representatives of several Provincial Departments to discuss plans of mutual interest.

In the field of municipal relations, officials from several municipalities in the area met with staff of the Commission to discuss a variety of subjects. Meetings with representatives of the City of Ottawa have been held to discuss the Ottawa-Hull Area Transportation Study published in 1965 and to up-date photogrammetric plans produced in 1957.

The Commission organized a Technical Committee functioning at several government levels to study and investigate all aspects of the design, traffic, parking and engineering of Confederation Square and the LeBreton Flats projects. Members of the committee, which meets twice a month, include representatives of the N.C.C., the City of Ottawa, the utilities concerned, various government departments and consultants.

Advice to Municipalities

The Commission has provided, at the request of municipalities in the National Capital Region, technical and financial assistance in the preparation of plans for land use, zoning and related matters. The following municipalities received such assistance during the fiscal year:

CITY OF OTTAWA: The Commission was represented on the Ottawa Planning Area Board, the Building Appearance Committee and the City and County of Carleton Technical Advisory committees to the Ottawa Planning Area Board.

EAST OF THE GATINEAU RIVER: The Commission was represented on the East of the Gatineau River Planning Committee which is conducting studies, financed in part by the Commission for the preparation of a master plan for the towns of Gatineau and Pointe-Gatineau, the municipalities of Templeton West, east part of Templeton East, Hull East, Perkins and the Village of Templeton.

TOWNSHIP OF GLOUCESTER: The "Official Plan of Land Use and Roads" of the north-east section prepared for the Township Planning Board by the Commission's staff was considered at a public hearing and submitted to the Minister of Municipal Affairs of the Province of Ontario for approval.

Studies were continued beyond the Greenbelt in the Orleans area and in the south-west portion of the Township.

TOWNSHIP OF MARCH: Representatives of the Commission meet monthly with the Township Planning Committee and assistance was given in the preparation of an Official Plan of Land Use and Roads for presentation to the Township Council and for public hearings.

TOWN OF AYLMER: Commission staff gave advice to the Planning Committee on the preparation of a new Master Plan of Land Use and Roads to be used as a basis for a revised zoning by-law.

Representatives of the Commission have also commented on the Official Plan for the Township of Torbolton and have been consulted by the City of Eastview regarding its planning studies. Some assistance was given to the City of Hull's Urban Renewal staff and the planning consultants retained by various municipalities.

PROPERTY ACQUISITION AND PROPERTY ADMINISTRATION

Property Acquisition

For the second consecutive year, property expropriations by the Commission declined in number. Major acquisitions included the Rideau Street block bounded by Mosgrove, Besserer, Little Sussex and Rideau streets, as well as four individual properties affected by the Ottawa River Parkway near Clybourne Avenue.

There were 162 settlements of outstanding expropriations during the year, compared to an annual average of 310 since 1958. The amount of these settlements was \$11,500,000, compared to \$6,409,000 last year.

The constitutional question as to power of the Commission to expropriate for Greenbelt purposes within the National Capital Region was raised in the case of Harold Munro v. the Commission. This matter was argued before The Honourable Mr. Justice Gibson in the Exchequer Court of Canada in April 1965. The decision was that the Commission had power to make such expropriations. The decision has been appealed to the Supreme Court of Canada.

Industrial Lands

Fifteen industries purchased 77 acres of land in the Commission's industrial areas during the year. As a result of these sales the amount of available serviced industrial land has been reduced to the point where it will be necessary to develop a new industrial section in the Walkley Road area. This development should be completed and sites available in the spring of 1967.

Property Administration

The Commission is responsible for the administration of properties with a capital value in excess of \$50,000,000, excluding parks and parkways. Properties are leased to more than 1,000 tenants and produce a gross annual income of approximately \$1,340,000. This year rental arrears have been reduced to 3.5 per cent from 6 per cent last year.

An Agricultural Committee advisory to the Property Division was formed on 25 February 1966. The purpose of this Committee is to provide to the Property Division, professional and technical aid and advice on development of the agricultural and forestry portions of the lands owned by the Commission. This new Committee consists of two senior staff members of the federal Department of Agriculture and a representative of the administration of the Agricultural Rehabilitation and Development Act (A.R.D.A.).

There are 41,390 acres of land in the Greenbelt, of which 14,199 acres are leased for agricultural purposes including market gardens; 10,748 acres are in use by departments and agencies of the Federal Government such as the Uplands Airport; Departments of Agriculture, Mines and Technical Surveys, and National Defence, including the Defence Research Board; 5,377 acres of marginal or submarginal farmland have been turned over to the Ontario Department of Lands and Forests for conservation purposes. The Mer Bleue bog in the eastern part of the Greenbelt is an area of 3,600 acres also for conservation.

Because of prolonged drought, the demand for market garden leases diminished. The Commission supplied 90 properties in the Township of Gloucester with water by tank truck for a period of six months.

At the end of the year, there were 135 farm units and 342 housing units rented in the Greenbelt. The latter require constant effort to maintain them in accordance with the Commission's standards.

Due to co-operation from three police forces, the R.C.M.P., Nepean and Gloucester township forces, the number of vehicles abandoned on N.C.C. property has been reduced.

Land Committee

Thirteen meetings were held during the year. Consideration was given to 162 land transactions involving 3,082.93 acres valued at a total of \$11,602,968. The Committee also made recommendations concerning easements, road widenings, transfers of land to other Government agencies and three land exchange transactions.

INTEGRATED SURVEY CONTROL

The Commission initiated this year a system of horizontal and vertical survey control. Specially designed survey monuments have been erected in the western parts of the City of Ottawa, western Greenbelt and adjacent areas to provide a network of accurately located points.

These monuments will constitute a permanent framework on which to base future mapping, planning studies and property boundary references. The system is designed for extension throughout the National Capital Region and forms an integral part of the International Network.

The project is being carried out with the assistance of the Department of Mines and Technical Surveys and in co-operation with the cities and townships within the Region. Information about the control points will be available to anyone whose work calls for such knowledge.

PUBLIC INFORMATION AND HISTORIC SITES

Public Information Program

The Commission continued its program designed to keep the public informed of N.C.C. projects and activities. Radio, television and the press provided effective media of communication as did illustrated lectures, guided tours and public displays.

This year, a special program was carried out for Ottawa and Toronto public school children in grade 8. In co-operation with the Ottawa Public School Board the Commission escorted groups of children through the N.C.C. Information Offices where they viewed a model of the National Capital and were given illustrated lectures. During the year, approximately 1500 students participated in this program.

For the fifteenth consecutive year, the Commission took part in mid-May of 1965 in the "Adventure in Citizenship" program sponsored by the Rotary Club of Ottawa. More than 240 high school students from across Canada attended. The Commission's contribution to this program consisted of a one day guided tour of the National Capital Region, an illustrated lecture, and a dinner at the Chateau Laurier. Further, a \$600. scholarship to the student writing the best essay on "My Country" was won in 1965 by Miss Marjorie Childerhose, of Parry Sound, Ontario.

Members of Parliament accompanied by Commissioners and staff of the Commission visited a number of N.C.C. projects in the metropolitan area.

Publications revised and released in both English and French included: Scenic Tours of the National Capital, Gatineau Park, A Short History of Ottawa and Hull, Mackenzie King Domain, the National Capital Commission, and the Capital of Canada. The N.C.C. Information Map was revised in 1965 and released in June.

During the year, an illustrated historical guide entitled "City on the Ottawa" was published in both English and French.
Other projects included:

Assistance in the design and printing of three Ottawa Tourist and Convention Bureau publications;

Exhibits at the Central Canada Exhibition in Ottawa and at the Canadian National Exhibition in Toronto.

The national information program, commenced in 1964, continued with lectures, radio and television interviews throughout Ontario and Quebec.

A short film in colour, on the National Capital and the work of the Commission, will be released late in 1966.

Historical Program

An Ottawa River Museum was opened to the public in a small building formerly used by the shipbuilding industry. It is located in Jacques-Cartier Park in Hull. Of particular interest is a display illustrating the history of the Ottawa River which includes maps, texts, prints, engravings, photographs and artifacts recovered along or in the River.

Historical plaques were designed for or placed on an additional 13 important buildings in the Capital area as part of a continuing program. The gathering of data for a historical guide to the National Capital Region, excluding the City of Ottawa, is now almost complete. "The Capital of Canada", a descriptive work, was written and published for the 54th Conference of Inter-Parliamentary Union held in Ottawa in September.

Grants in aid to the Mill of Kintail, Canadian Arts and Pioneer Museum near Almonte and to Watson's Mill at Manotick were continued. Liaison and collaboration with other local historical groups was also continued.

SUMMARY OF OFFICIAL REPORT RECEIVED FROM COMMANDING OFFICER, "A" DIVISION ROYAL CANADIAN MOUNTED POLICE

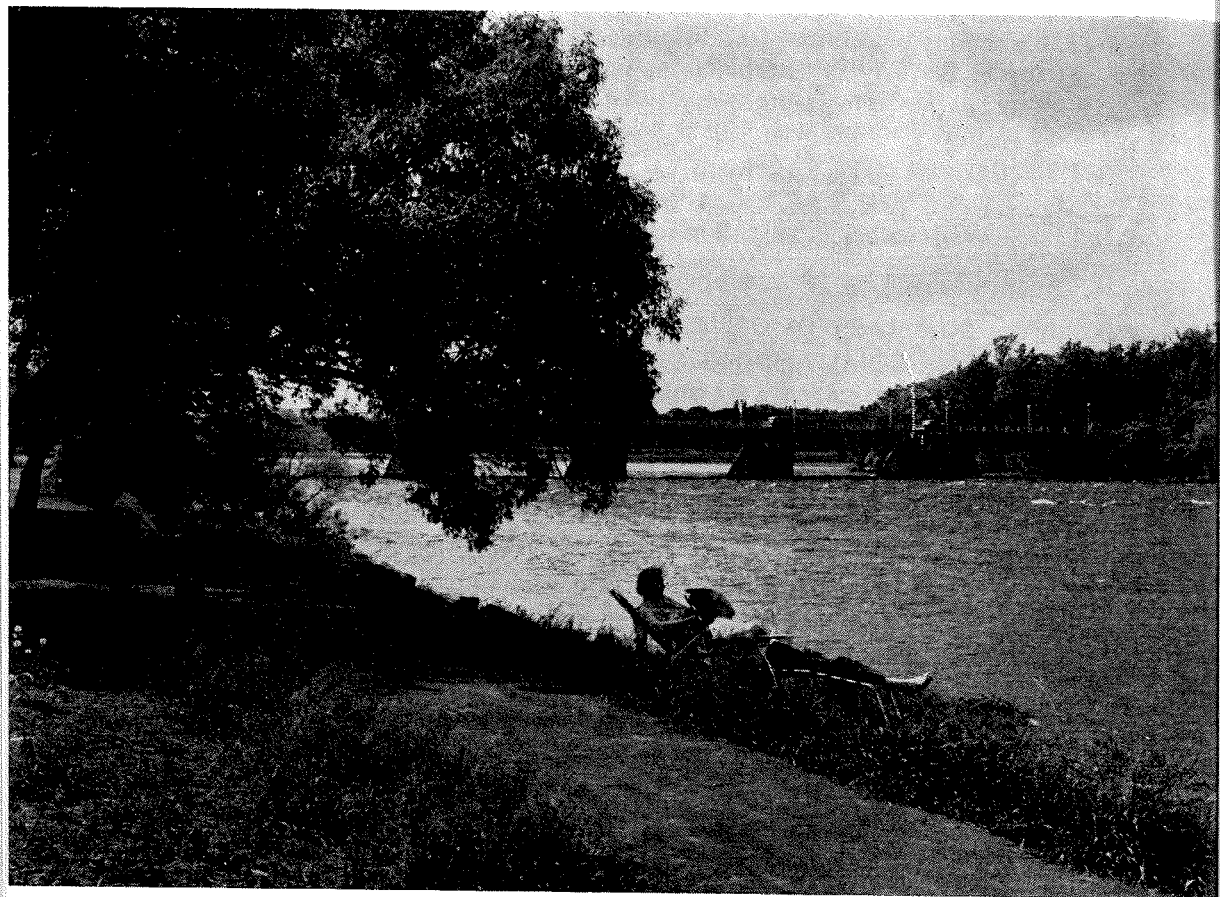
This report covers operations of the Traffic Section, "A" Division, Royal Canadian Mounted Police, on N.C.C. Driveways, in the Gatineau Park and N.C.C. property in the Ottawa-Hull area from 1 April 1965 to 31 March 1966.

Patrols in this period were more extensive than in any previous year because of the increasing public use of N.C.C. driveways, parks and picnic sites. Although fewer traffic violation tickets (6,954) were issued than in the previous year (7,491), convictions for traffic offenses increased by 23.8 per cent over the previous year.

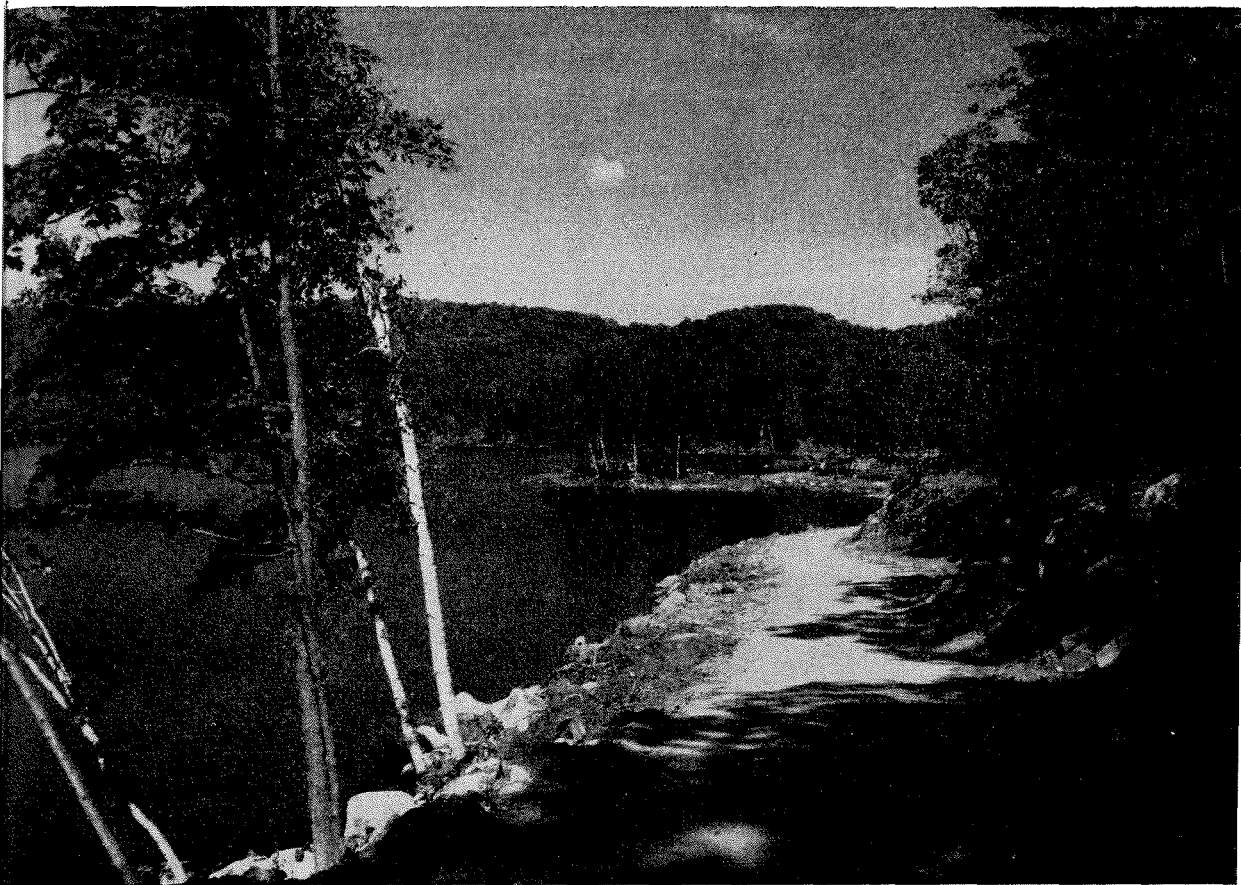
The report also notes a decrease in motor vehicle accidents and a decrease in the number of persons injured in accidents investigated under N.C.C. Traffic and Property Regulations. No fatal accidents occurred during the year on N.C.C. driveways and parks.

Fines and costs paid into Ottawa District courts as a result of convictions under N.C.C. Traffic and Property Regulations totalled \$45,815.25 as compared with \$35,007.65 in the previous year.

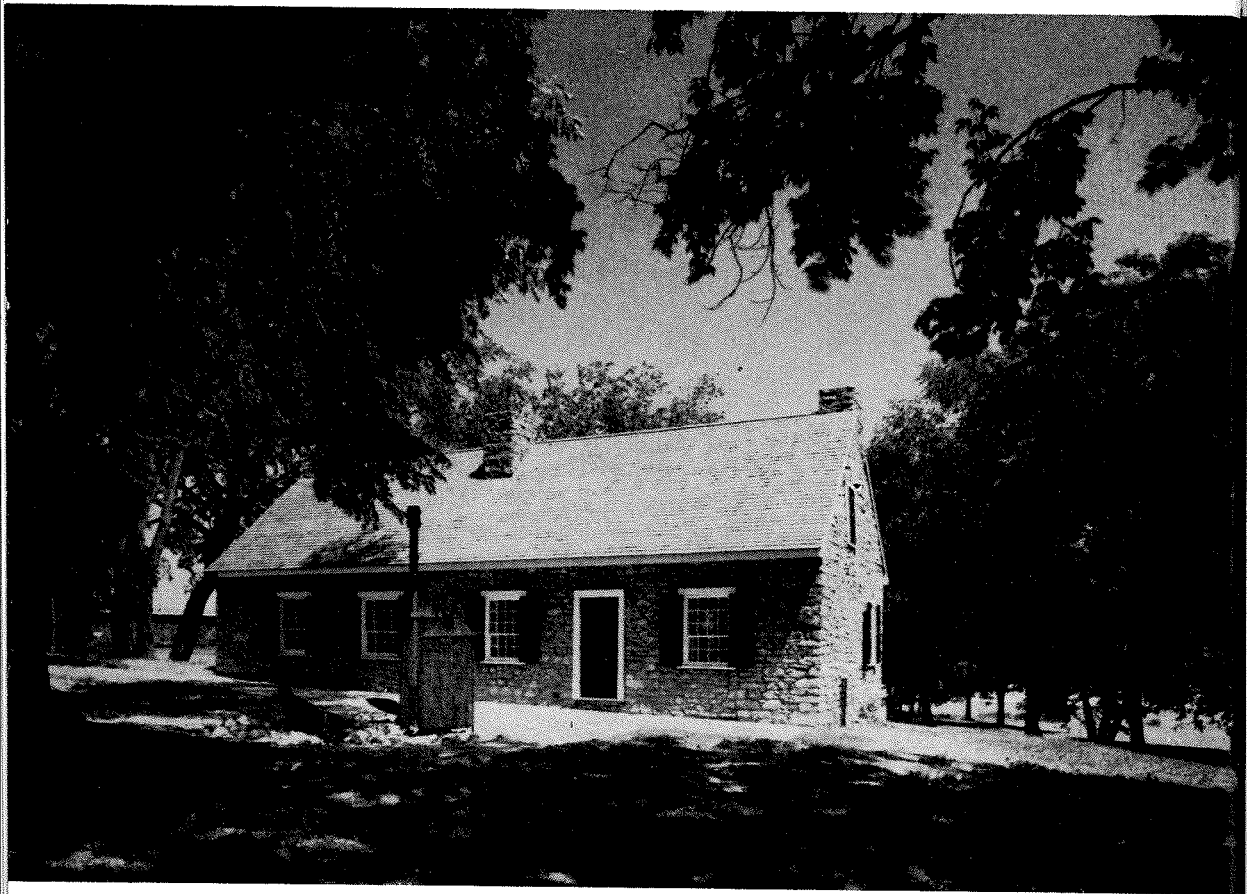
Other duties performed by the Traffic Section of the R.C.M.P. for the Commission included assistance to other police forces, investigations of damage to N.C.C. property, provision of motorcycle escorts and traffic control duties.



Pedestrian pathway along Ottawa River near the Champlain Bridge.



Semi-wilderness camping at Taylor Lake in Catineau Park.



The Ottawa River Museum in Jacques Cartier Park in the City of Hull.



"Fountain Court", Confederation Heights.

NCC



CCN

National Capital Commission

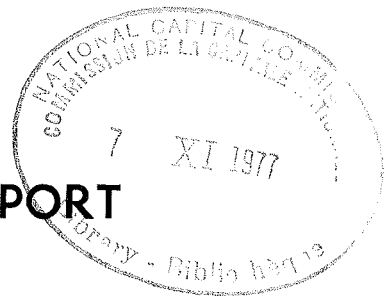
Sixty-Sixth Annual Report
1965-1966

Part Two

NCC



CCN



SIXTY-SIXTH ANNUAL REPORT

Part Two

Consisting of the following:

	Page
(i) Report of the Auditor General of Canada to the Minister of Public Works	1- 2
(ii) Financial Statements for the year ended March 31, 1966:	
Balance Sheet as at March 31, 1966	3
Notes to Balance Sheet as at March 31, 1966	5
Statement I—Statement of Expense of Operation and Maintenance of Parks, Parkways and Grounds Adjoining Government Buildings at Ottawa and Hull, Maintenance of other Properties and General Administration	7- 8
Statement II—Statement of Interest Charges on Government of Canada Loans for the year ended March 31, 1966	9
Statement III—Statement of National Capital Fund for the year ended March 31, 1966	10-11
Statement IV—Statement of Government of Canada Loans for the Acquisition of Property in the National Capital Region for the year ended March 31, 1966	12
Statement V—Statement of Proprietary Interest for the year ended March 31, 1966	13
Schedule "A"—Capital Assets as at March 31, 1966	14
(iii) Comments of the Commission regarding Financial Statements for the year ended March 31, 1966	15-17
(iv) Expenditures for development and improvement within the National Capital Region from April 1, 1947 to March 31, 1966	18-19
(v) Chart of expenditures for development and improvement within the National Capital Region from April 1, 1947 to March 31, 1966	21



AUDITOR GENERAL OF CANADA

Ottawa, June 29, 1966.

The Honourable George J. McIlraith,
Minister of Public Works,
Ottawa.

Sir,

I have examined the accounts and financial statements of the National Capital Commission for the year ended March 31, 1966.

A revised capital budget of the Commission which provided for expenditures of \$24,044,000 in 1965-66 was approved on February 24, 1966 by Order in Council P.C. 1966-359 pursuant to sub-section (2) of section 80 of the Financial Administration Act. It was stipulated in the approved budget that expenditures in respect of certain items might exceed amounts shown by not more than 10% without further approval, provided that the prescribed total for each budget grouping was not exceeded. The accounts of the Commission show that of the total expenditures for the year of \$23,685,000, the expenditures for one grouping exceeded the authorized total of \$11,625,000 by \$1,498,000, and included in this grouping were two major items the approved limits for which were exceeded by a total of \$567,000.

Vote L70 provided for loans to the Commission of \$9,000,000 for the purpose of acquiring property in the National Capital Region, excluding property being acquired for the Greenbelt. These loans together with funds on hand at April 1, 1965 provided a total of \$9,449,311 for these property acquisitions. During the year the total expenditure incurred by the Commission on these properties amounted to \$10,082,134, or \$632,823 in excess of the funds available.

The presentation of the Statement of National Capital Fund (Statement III) has been extended to combine the funds available in the Consolidated Revenue Fund and those drawn from that fund and in the hands of the Commission.

In compliance with the requirements of section 87 of the Financial Administration Act, I report that, subject to the foregoing, in my opinion:

- (a) proper books of account have been kept by the Commission;
- (b) the financial statements of the Commission
 - (i) were prepared on a basis consistent with that of the preceding year and are in agreement with the books of account,
 - (ii) in the case of the balance sheet, give a true and fair view of the state of the Commission's affairs as at the end of the year, and
 - (iii) in the case of the related statements give a true and fair view of the financial transactions of the Commission for the year; and
- (c) the transactions of the Commission that have come under my notice have been within the powers of the Commission under the Financial Administration Act and any other Act applicable to the Commission.

Yours faithfully,

A. M. HENDERSON,
Auditor General of Canada.

NATIONAL CAPITAL COMMISSION

(Established by the National Capital Act)

BALANCE SHEET AS AT MARCH 31, 1966

(with comparative figures as at March 31, 1965)

<u>Assets</u>			<u>Liabilities</u>		
	<u>1966</u>	<u>1965</u>		<u>1966</u>	<u>1965</u>
Cash	\$ 1,526,061	\$ 3,095,582	Accounts Payable	\$ 2,948,137	\$ 804,831
Short-term Deposit Certificates	250,000	425,000	Provision for Grants in lieu of Municipal Taxes	177,211	234,469
National Capital Fund on deposit in the Consolidated Revenue Fund	1,625,500	425,500	Advances from Government Departments and Agencies for services to be rendered	17,410	29,420
Investment in Canadian National Railway Company Bonds, at cost (market value \$19,690)	20,136	20,136	Contractors' Security and other Deposits and Holdbacks	717,657	202,922
Due from Government of Canada in respect of a Parliamentary Appropriation for Operation and Maintenance, General Administration and Interest Charges on Outstanding Loans for Acquisition of Property	—	318,000	Due to Government of Canada — Unexpended Balances of Appropriations in respect of:		
Rentals and other Receivables	977,842	327,472	Expenses of Operation, Maintenance and General Administration (Statement I) ...	\$ 225,358	92,622
Inventories of Small Tools and Equipment, Maintenance Supplies, Nursery Stocks, etc., at cost or estimated value	214,282	204,273	Interest Charges (Statement II)	<u>62,531</u>	<u>15,947</u>
Contractors' Security and other Deposits and Holdbacks, per contra	717,657	202,922		287,889	108,569
Capital Assets, at cost (Schedule "A")	135,138,179	113,802,507	National Capital Fund — Unexpended Balance (Statement III)	829,201	2,175,265
			Government of Canada Loans for acquisition of Property (Statement IV) —		
			In the Greenbelt	34,448,099	
			In other areas	32,741,460	
			Unexpended funds	<u>139,691</u>	
				67,329,250	59,851,486
			Proprietary Interest (Statement V) ...	<u>68,162,902</u>	<u>55,414,430</u>
	<u>\$140,469,657</u>	<u>\$118,821,392</u>		<u>\$140,469,657</u>	<u>\$118,821,392</u>

The appended notes form an integral part of this statement.
Certified correct:

Marcel Couture
Director-General
Finance and Administration

Approved on behalf of the Commission:

S. F. Clark, Lt.-Gen.
Chairman
D'Arcy Audet
Commissioner

I have examined the above Balance Sheet and the related Statements and have reported thereon under date of June 29, 1966 to the Minister of Public Works.

A. M. HENDERSON
Auditor General of Canada

NATIONAL CAPITAL COMMISSION

Notes to Balance Sheet as at March 31, 1966

- (1) Parliamentary votes in the fiscal years 1959-60 to 1963-64, inclusive, authorized loans of \$37,000,000 to the Commission, in the current and subsequent fiscal years, for the purpose of acquiring property in the Greenbelt. Of this amount \$35,400,000 was borrowed to March 31, 1966 leaving \$1,600,000 which may be borrowed in subsequent fiscal years.
- (2) In addition to the liabilities shown in the Balance Sheet, the Commission was under obligation as at March 31, 1966, for:
 - (a) compensation for properties expropriated estimated at \$14,000,000;
 - (b) outstanding commitments under uncompleted work contracts amounting to approximately \$7,939,000; and
 - (c) a balance of approximately \$5,000,000 pursuant to an agreement with the Canadian National Railway Company for the acquisition of certain railway assets related to the railway relocation program.
- (3) The Commission is committed under an agreement with the Canadian Pacific Railway Company and the Canadian National Railway Company to the relocation of certain railway tracks, buildings and works.
- (4) The Commission is committed to landscape and to transfer free of charge, the lands required for the following purposes:
 - (a) to the City of Ottawa, the right-of-way for the Queensway; and
 - (b) to the provinces of Ontario and Quebec, the approaches for the Macdonald-Cartier Bridge.

NATIONAL CAPITAL COMMISSION**Statement of Expense of Operation and Maintenance of Parks,
Parkways and Grounds adjoining Government Buildings
at Ottawa and Hull, Maintenance of other Properties and
General Administration
for the year ended March 31, 1966**

(with comparative figures for the year ended March 31, 1965)

Expense	<u>1966</u>	<u>1965</u>
Expenses of Commissioners, Chairman, Vice-Chairman and Committee Members	\$ 50,178	\$ 46,766
Administration, secretarial services and accounting	287,632	224,638
Planning, property acquisition and management	389,775	344,081
Engineering and outside supervisors — construction and maintenance	184,896	155,773
Landscape architecture	160,868	124,565
Information and Historical Research Division	136,880	97,883
Gatineau Park Division	290,379	249,466
Operation and maintenance of parks and parkways of the Commission	1,127,914	1,211,824
Maintenance of grounds adjoining Government Buildings	636,723	643,012
Other maintenance — Queensway	12,187	14,941
Employee benefits	164,578	160,329
Grants in lieu of taxes to local municipalities	363,894	255,976
Capital outlays —		
Parkway lighting system	\$20,493	12,514
Machinery and equipment	88,131	42,336
Motor vehicles	47,655	36,766
Office equipment	6,450	7,194
	<u>162,729</u>	<u>98,810</u>
Total expense for the year	3,968,633	3,628,064

Statement I (Cont'd)

Less: Incidental Income — Equipment rentals, sale of supplies and nursery stocks, supervisory charges, etc.	187,991	237,686
Net expense for the year	<u>\$3,780,642</u>	<u>\$3,390,378</u>
Provided for by Department of Public Works Vote 60	\$4,006,000	\$3,483,000
Less: Unexpended balance refundable to the Government of Canada	225,358	92,622
	<u>\$3,780,642</u>	<u>\$3,390,378</u>

Note: Included in the expense for 1966 is remuneration of Commissioners,
\$30,520.

NATIONAL CAPITAL COMMISSION**Statement of Interest Charges on Government of Canada Loans
for the year ended March 31, 1966**

(with comparative figures for the year ended March 31, 1965)

	<u>1966</u>	<u>1965</u>
Interest on loans	\$3,253,842	\$2,857,664
Less: Net income from rentals \$492,944		382,052
Less: Construction of farm buildings on rental property	20,324	23,198
	<u>472,620</u>	<u>358,854</u>
Interest on bank deposits, bonds and mortgages	40,753	34,757
	<u>513,373</u>	<u>393,611</u>
	<u>\$2,740,469</u>	<u>\$2,464,053</u>
Provided for by Department of Public Works Vote 60	\$2,803,000	\$2,480,000
Less: Unexpended balance refundable to the Government of Canada	62,531	15,947
	<u>\$2,740,469</u>	<u>\$2,464,053</u>

Note: The \$20,324 charge for construction of farm buildings on rental property shown above has been transferred in 1966-67 to the National Capital Fund — Improvements to farm properties in the Greenbelt, in order to comply with Treasury Board's directive that rental income is to be applied to the payment of interest on government loans.

NATIONAL CAPITAL COMMISSION**Statement of National Capital Fund
for the year ended March 31, 1966**

(with comparative figures for the year ended March 31, 1965)

	<u>1966</u>	<u>1965</u>
Balance at April 1		
In the Consolidated Revenue Fund	\$ 425,500	\$ 6,425,500
In the hands of the Commission	1,749,765	985,695
	<u>2,175,265</u>	<u>7,411,195</u>
Parliamentary appropriation	12,100,000	4,500,000
Proceeds from sales of property	1,028,640	425,364
	<u>\$15,303,905</u>	<u>\$12,336,559</u>
Expenditures		
Capital outlays —		
Property:		
Gatineau Park	211,587	523,946
Approaches to Macdonald - Cartier Bridge	25,332	331,082
Repayment of loans to acquire property now in use —		
Queensway	665,389	2,529,473
Ottawa River Parkway	443,296	—
Sussex Drive	180,587	—
Roads and parkways	1,572,704	1,679,408
Bridges and approaches	119,581	29,010
Parks and boulevards	196,297	230,158
Railway lines and structures	9,837,708	3,694,008
Buildings	151,682	311,148
Improvement to LeBreton Flats	107,396	71,058
Improvements to farm properties in the Greenbelt	72,172	66,677

Statement III (Cont'd)

Development of industrial lands for resale	(53,526)	145,407
Improvement to historic properties	105,981	99,202
	<u>13,636,186</u>	<u>9,710,577</u>
Contribution towards cost of construction of the Queensway — landscaping	40,255	45,823
Contribution towards cost of reconstruction of Riverside Drive	110,955	55,979
Grant to the city of Ottawa re interest on the cost of constructing certain sewer and water works projects undertaken in advance of normal requirements	36	46,615
Cost of demolition of buildings located on land acquired for the approaches to the Macdonald-Cartier Bridge	80,556	27,582
Cost of studies related to redevelopment of central Ottawa	145,435	59,541
Changes to driveway in Confederation Park	91,034	29,306
Grants to historical societies for operation and maintenance of historic sites	11,240	11,994
Cost of studies related to redevelopment of LeBreton Flats	66,737	46,535
Contribution towards cost of construction of:		
New bridge at Heron Road	—	2,867
Overpass at the intersection of Carling Avenue and the proposed Western Parkway	1,560	—
Share of cost of study of development outside the Greenbelt	39,919	—
Rehabilitation of Nepean Point	18,041	—
Rehabilitation of dam at Rideau Falls	15,000	—
Miscellaneous grants	57,779	12,875
Maintenance expenses	159,971	111,600
	<u>14,474,704</u>	<u>10,161,294</u>
Balance at March 31		
In the Consolidated Revenue Fund	1,625,500	425,500
In the hands of the Commission	(796,299)	1,749,765
	<u>\$ 829,201</u>	<u>\$ 2,175,265</u>

NATIONAL CAPITAL COMMISSION**Statement of Government of Canada Loans
for the Acquisition of Property in the National Capital Region
for the year ended March 31, 1966**(with comparative figures for the year ended March 31, 1965
and cumulative figures from inception to March 31, 1966)

	<u>1966</u>	<u>1965</u>	<u>From inception 1957 to 1966</u>
1. Property in the Greenbelt —			
Funds on hand at April 1	\$ 809,824	\$ 225,430	
Loans received ...	\$1,500,000	3,000,000	\$39,282,434
Less: Repayments <u>95,362</u>		316,009	4,061,821
	<u>1,404,638</u>	<u>2,683,991</u>	<u>35,220,613</u>
	2,214,462	2,909,421	
Property acquired 1,537,310		2,415,606	38,509,920
Less: Property sold <u>95,362</u>		316,009	4,061,821
	<u>1,441,948</u>	<u>2,099,597</u>	<u>34,448,099</u>
Funds on hand at March 31	<u>772,514</u>	<u>809,824</u>	<u>772,514</u>
2. Property other than Greenbelt —			
Funds on hand at April 1	449,311	157,977	
Loans received ... 9,000,000		8,300,000	39,617,565
Less: R e p a y - ments (includ- ing \$1,289,272 provided by the National Capi- tal Fund)	<u>2,926,872</u>	4,119,181	7,508,928
	<u>6,073,128</u>	<u>4,180,819</u>	<u>32,108,637</u>
	6,522,439	4,338,796	
Property acquired 10,082,134		8,008,666	40,250,388
Less: Property sold or charged to the National Capital Fund ... <u>2,926,872</u>		4,119,181	7,508,928
	<u>7,155,262</u>	<u>3,889,485</u>	<u>32,741,460</u>
Funds on hand at March 31	<u>(632,823)</u>	<u>449,311</u>	<u>(632,823)</u>
Total Funds on hand at March 31	<u>\$ 139,691</u>	<u>\$1,259,135</u>	<u>\$ 139,691</u>

NATIONAL CAPITAL COMMISSION**Statement of Proprietary Interest for the year ended March 31, 1966**

(with comparative figures for the year ended March 31, 1965)

	<u>1966</u>	<u>1965</u>
Balance at April 1	\$55,414,430	\$46,062,340
Add:		
Capital outlays —		
Statement of Expense of Operation, Maintenance and General Adminis- tration (Statement I)	162,729	98,810
National Capital Fund (Statement III)	13,636,186	9,710,577
Increase in equity in certain leasehold property	3,603	3,602
Increase (decrease) in inventories of maintenance and operating supplies, etc.	10,009	(11,003)
	<u>69,226,957</u>	<u>55,864,326</u>
Deduct:		
Proceeds from sales of property acquired out of the National Capital Fund	1,028,640	425,364
Loss on disposal of motor vehicles and equipment	35,415	24,532
	<u>1,064,055</u>	<u>449,896</u>
Balance at March 31	<u>\$68,162,902</u>	<u>\$55,414,430</u>

NATIONAL CAPITAL COMMISSION**Capital Assets as at March 31, 1966**

(with comparative figures as at March 31, 1965)

	<u>1966</u>	<u>1965</u>
Property		
Parks, parkways, etc.	\$ 23,734,461	\$ 20,966,935
Queensway	4,327,483	4,534,713
Gatineau Park	5,637,220	5,425,632
Industrial and railway sites	1,376,380	1,724,577
Mackenzie King Bridge	270,963	502,271
Macdonald-Cartier Bridge	2,436,918	2,382,699
LeBreton Flats	16,720,682	11,314,467
Greenbelt in the townships of Gloucester and Nepean	34,448,099	33,006,152
Historic properties	3,157	3,157
Leases and licences of occupation	1	1
	<u>88,955,364</u>	<u>79,860,604</u>
Roads and parkways	13,943,729	12,371,024
Bridges and approaches	2,746,354	2,626,773
Parks and boulevards	4,418,948	4,222,651
Parkway lighting system	271,133	250,640
Railway lines and structures	20,172,651	10,334,944
Improvements to farm properties in the Greenbelt	334,926	262,753
Improvements to historic properties	339,269	233,289
Development of industrial lands	577,486	631,011
Improvements to LeBreton Flats	314,147	206,751
Buildings	2,135,977	1,980,693
Machinery and equipment	583,999	508,202
Motor vehicles	268,861	243,377
Office equipment	75,335	69,795
	<u>\$135,138,179</u>	<u>\$113,802,507</u>

NATIONAL CAPITAL COMMISSION

Comments regarding Financial Statements for the year ended March 31, 1966

(for details refer to the financial statements)

	<u>1966</u>	<u>1965</u>
1. Expense of operation and maintenance of parks, parkways and grounds adjoining Government buildings at Ottawa and Hull, maintenance of other properties and general administration	\$ 3,968,633	\$ 3,628,064

The Commission has spent for this purpose \$3,968,633 including \$162,729 for improvements to the parkway lighting system, motor vehicles, machinery and equipment. These expenditures were financed by parliamentary appropriations of \$4,006,000 of which \$225,358 is refundable to the Government of Canada — net \$3,780,642 and incidental income of the Commission amounting to \$187,991.

2. Interest charges on outstanding Government of Canada loans	3,253,842	2,857,664
---	-----------	-----------

The Commission has spent \$3,253,842 for interest payable to the Receiver General of Canada on loans made to the Commission for the acquisition of property in the National Capital Region. These expenditures were financed by parliamentary appropriations of \$2,803,000 of which \$62,531 is refundable to the Government of Canada — net \$2,740,469 and by rentals earned and interest income of \$513,373.

3. National Capital Fund — Expenditures for improvement and development within the National Capital Region	14,474,704	10,161,294
Less: Sales of property	1,028,640	425,364
	<u>13,446,064</u>	<u>9,735,930</u>

The Commission has spent \$14,474,704 for this purpose of which \$13,636,186 was for capital outlays and \$678,548 for assistance to municipalities and \$159,970

for maintenance of lands and rehabilitation work. \$10,900,000 was drawn out of the Fund during the year.

After crediting the current year's appropriation of \$12,100,000, the National Capital Fund's balance at the end of the fiscal year was \$829,201.

Because of the necessity to meet deadlines for the relocation of tracks, passenger station and other railway works, pursuant to contractual obligations with the railway companies, which were approved by the Government, the Commission carried out the construction required at a pace faster than had been anticipated and provided for in its Capital Budget for 1965-66. Expenditures in excess of the amount shown in the Budget amounted to \$1,300,000. The Capital Budget for 1966-67 was reduced correspondingly.

4. Acquisition of property through loans provided by the Government of Canada:

Greenbelt	\$ 1,441,948	\$ 2,099,596
Other than Greenbelt	7,155,262	3,889,484

The Commission has spent \$8,597,210 (net) during the year for the acquisition of property as follows:

Greenbelt	\$1,537,310
Less: Sales of property	95,362
Net acquisitions:	<u>\$1,441,948</u>

Parks, parkways, LeBreton Flats, industrial and historic properties	\$10,082,134
---	--------------

Less: Sales of property (including \$1,289,272 provided by the National Capital Fund)	2,926,872
---	-----------

Net acquisitions	<u>7,155,262</u>
------------------------	------------------

Total acquisitions (net)	<u>\$8,597,210</u>
--------------------------------	--------------------

The Commission borrows money to finance its outlays for the acquisition of property as cheques are negotiated. At

March 31, 1966, cheques which had not yet been negotiated amounted to \$1,329,000.

These acquisitions were financed by loans from the Government of Canada of \$1,500,000 for the Greenbelt — loans repaid amounted to \$95,362 and loans of \$9,000,000 for property other than the Greenbelt — loans repaid amounted to \$2,926,872.

The loans outstanding at the end of year amounted to \$34,448,099 for the Greenbelt, \$32,741,460 for property other than the Greenbelt and \$139,691 for unexpended funds. The total loans amounted to \$67,329,250.

The total expenditures of the Commission for the year ended March 31, 1966 amounted to

<u>\$29,265,749</u>	<u>\$22,210,738</u>
---------------------	---------------------

These expenditures were financed out of:

Parliamentary appropriations	\$19,967,175	\$15,590,361
Loans to the Commission	8,597,210	5,989,080
Revenues of the Commission	701,364	631,297
	<u>\$29,265,749</u>	<u>\$22,210,738</u>

NATIONAL CAPITAL COMMISSION

Expenditures for development and improvement within the National Capital Region from April 1, 1947 to March 31, 1966

The Commission has spent \$156,101,148 for improvement and development within the National Capital Region during the period April 1, 1947 to March 31, 1966. These expenditures were made for the following purposes:

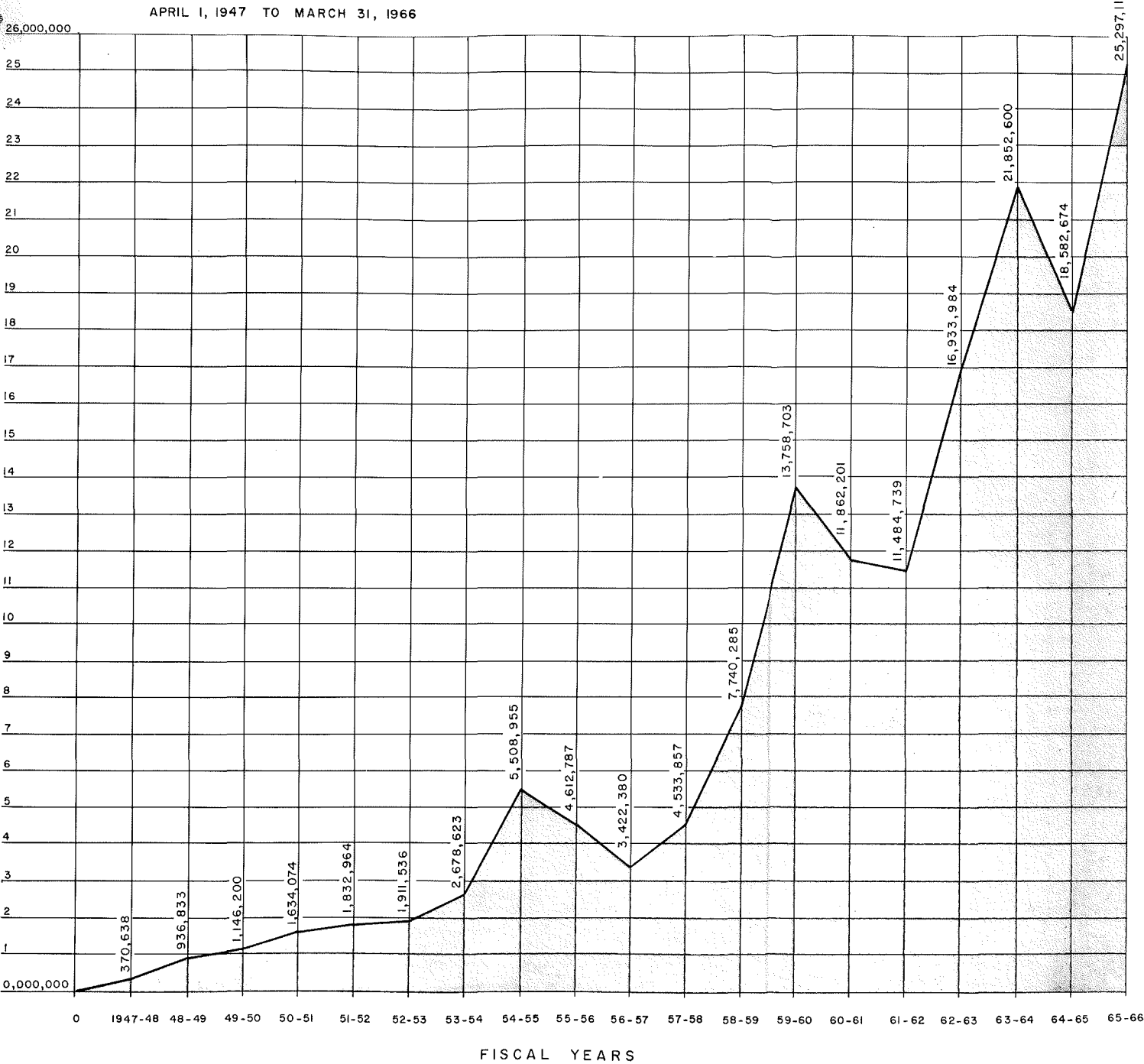
Acquisition of property, including Queensway and LeBreton Flats		\$ 86,794,800
Construction of the Mackenzie King Bridge		1,351,548
Relocation of railway facilities		20,172,650
Miscellaneous construction — Commission properties —		
Parkways in Gatineau Park	\$ 5,918,547	
Lac des Fées Parkway	507,770	
Development of Hog's Back Park	523,636	
Development of Hull parks	758,783	
Gatineau Park (improvement of park facilities)	1,234,692	
Ottawa River Parkway	4,590,500	
Improvements to LeBreton Flats	314,147	
Improvements in the Greenbelt	319,538	
Miscellaneous projects	4,856,427	
Improvements to historic properties	339,269	
Colonel By Drive	461,856	19,825,165
Assistance to municipalities, etc. —		
Share of joint projects and grants —		
Grants to the City of Ottawa for construction of sewers and water mains, in advance of need, total \$2,758,000, paid to date	2,685,971	
Grant to the City of Ottawa for construction of sewers to the sewage disposal site at Green Creek to alleviate the pollution of the Ottawa River, paid in full	5,000,000	

Grant to Nepean for construction of a new sewer and sewage disposal plant, paid in full	160,000	
Contribution re construction of Bytown bridges and improvements to Sussex Drive	966,315	
Contribution re construction of new Bronson Avenue - Canal Bridge	639,313	
Contribution re construction of Riverside Drive	1,202,411	
Improvements to Ottawa and Hull approaches to the Chaudière Bridge	797,603	
Contribution re construction of Dunbar Bridge	190,815	
Landscaping and demolition of buildings for the Queensway	438,581	
Demolition of buildings for approaches to Macdonald-Cartier Bridge	175,452	
Share of cost of structure at junction of Carling Avenue and proposed Western Parkway	187,166	
Grants to historical societies	50,524	
Miscellaneous assistance	277,590	
Miscellaneous research and studies	34,114	
Confederation Square changes	459,242	
LeBreton Flats — studies, etc.	113,272	13,378,369
Miscellaneous maintenance of undeveloped lands and rehabilitation projects.....		1,003,322
Interest on loans to acquire property		13,575,294
Total expenditures		<u><u>\$156,101,148</u></u>

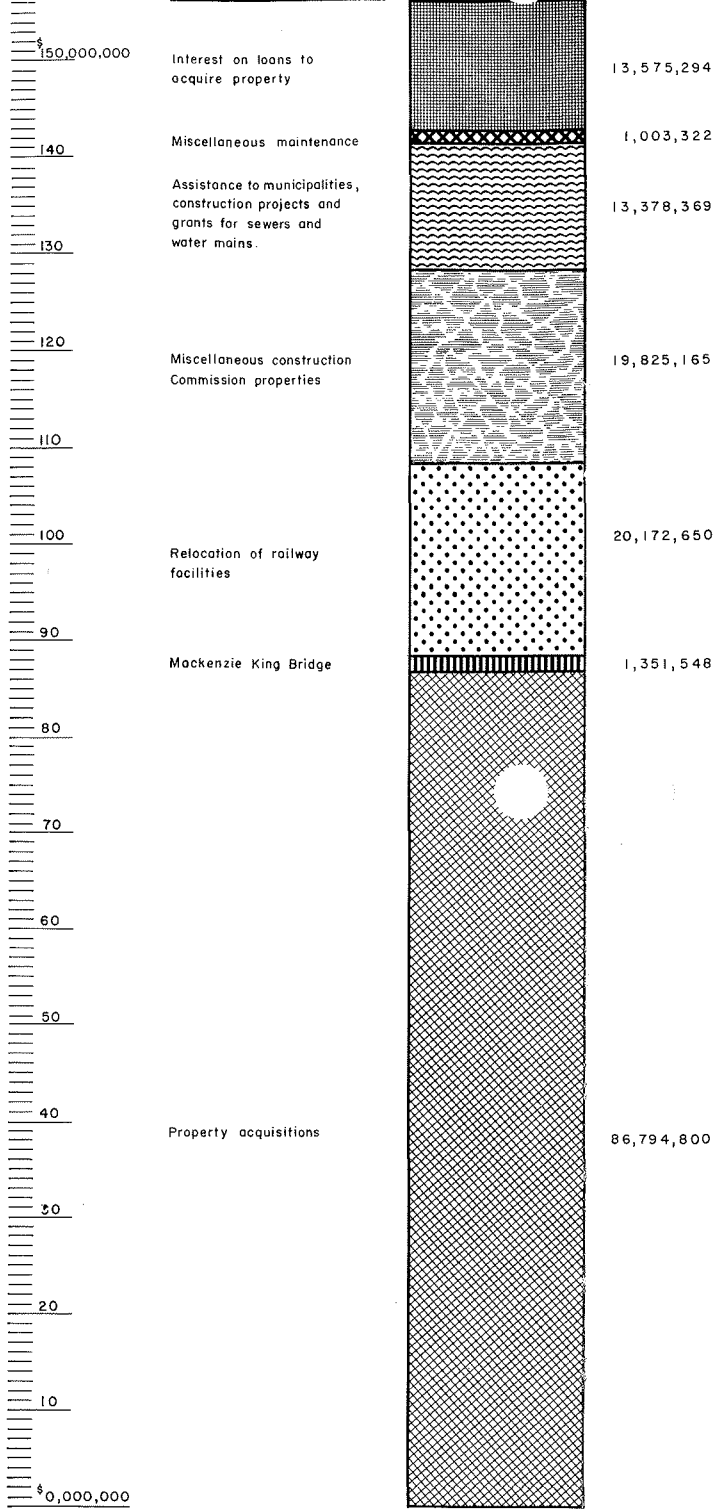
NOTE: See also Financial Chart attached.

NATIONAL CAPITAL COMMISSION

EXPENDITURES FOR DEVELOPMENT AND IMPROVEMENT
WITHIN THE NATIONAL CAPITAL REGION



CUMULATIVE TOTAL \$ 156,107,8



DETAILS OF PROJECTS

Grants to Ottawa for construction of sewers and water mains. Total \$ 2,758,000	\$ 2,685,971
Grant to Ottawa for construction of sewer to sewage disposal site at Green Creek	5,000,000
Grant to Nepean for construction of new sewer and sewage disposal plant	160,000
Construction of Bytown bridges and improvements to Sussex Drive.	966,315
Contribution re construction of new Branson Bridge	639,313
Contribution re reconstruction of Riverside Drive.	1,202,411
Improvements to Ottawa and Hull approaches to Chaudiere Bridge.	797,603
Contribution re construction of Dunbar Bridge	190,815
Landscaping and demolition of buildings for the Queensway	438,581
Demolition of buildings on approaches of Macdonald - Cartier Bridge	175,452
Share of cost of structure at junction of Carling Ave., Richmond Rd. and proposed Western Parkway	187,166
Grants to Historical Societies	50,524
Miscellaneous assistance	277,590
Miscellaneous research and studies	34,114
Confederation Square - changes	459,242
LeBreton Flats - studies etc.	113,272
	\$ 13,378,369

DETAILS OF PROJECTS

Parkways in Gatineau Park	\$ 5,918,547
Lac des Fees Parkway	507,770
Development of Hogs Back Park	523,636
Development of Hull Parks	758,783
Improvement of Park Facilities in Gatineau Park	1,234,692
Ottawa River Parkway	4,590,500
Improvements to LeBreton Flats	314,147
Improvements in the Greenbelt	319,538
Improvements to historic properties	339,269
Miscellaneous parks and parkway projects	4,856,427
Col. By Drive	461,856
	\$ 19,825,165

DETAILS OF PROPERTY ACQUISITIONS

Confederation Square	1,692,749
Eastern Parkway	2,092,446
Gatineau Park	5,450,701
Greenbelt in Ontario	34,448,099
Historic sites	3,157
Lucerne Parkway	607,044
Philemon Wright Parkway - Hull	906,145
Hull General lands	855,911
Industrial and railway sites. Twp. of Gloucester	545,297
Mackenzie King Bridge	270,962
Miscellaneous sites	1,463,534
Approaches to Macdonald - Cartier Bridge	2,011,964
Northern Entrance - Hull	424,955
New passenger railway terminal at Hurdman	819,881
Ottawa River Parkway	4,275,032
Queensway	4,327,483
Rideau River Parkway	2,478,762
LeBreton Flats	16,720,682
Station Boulevard	242,151
Sussex Drive	4,866,362
Western Parkway	933,881
Central Business District - Ottawa	225,592
Deschênes - Britannia Bridge	946,332
Col. By Drive extension	185,678
	\$ 86,794,800