



NCC
CCN

Gatineau Park
Parc de la Gatineau



Les
Amis
du parc de la Gatineau
Friends
of Gatineau Park



MY ADVENTURES



ACTIVITY BOOKLET

Mackenzie King Estate

Yours to protect. Yours to enjoy.

Tips for Your Adventures

Are you ready to explore the Mackenzie King Estate?
It is home to many precious plants and animals!
You are a welcome guest adventurer!

Here are some important pointers.

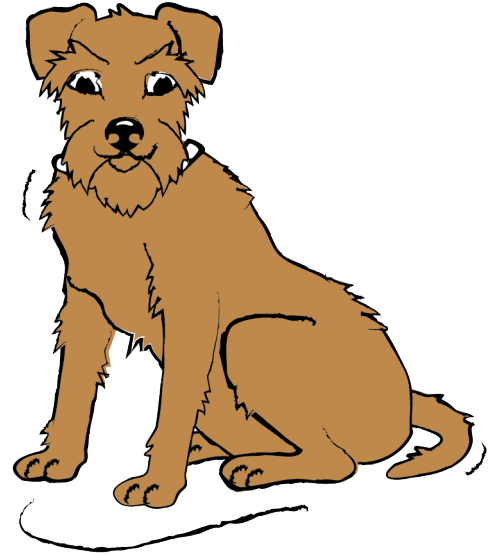
- 🐾 Stay on the official marked trails:
 - To avoid encountering ticks and poison ivy, or damaging rare and fragile plants, or the homes of small animals.
 - It's a lot easier for you to find your way, and for Park staff to find you, if they have to.
- 🐾 The sound of your footsteps and your voice warn animals of your presence. Keep a safe distance, observe from afar and do not feed any animals.
- 🐾 Plan your outing.
- 🐾 Bring water and a snack.
- 🐾 Dress for the weather.
- 🐾 Cellphone reception varies in the Park.
- 🐾 **In case of an emergency, call 613-239-5353.**

You're ready!

Try to tread lightly, and leave as little sign of your passage as possible.

Visit the Mackenzie King Estate as the avatar of Pat!

He was William Lyon Mackenzie King's beloved dog, who spent lots of time here.



To turn into Pat, you can start at a stone wall.

Ask someone to read this:

- 🐾 Put one hand on the wall and one hand on your human heart, and close your eyes.
- 🐾 Feel seven heartbeats as a human.
- 🐾 Your body is shrinking smaller and smaller.
- 🐾 Fur is growing and covering your skin. It is shaggy and curly.
- 🐾 Your bottom is growing a little wagging tail.
- 🐾 Your ears are becoming pointy and sharp.
- 🐾 Your hands and feet are melding into four paws.
- 🐾 At a clap of the hands, you will turn into Pat!

Ready to plan your adventures?

TAKE A LOOK AT THE MAP. AND THEN, ALONG WITH YOUR HUMAN GROWN-UPS, BROWSE THROUGH THE ACTIVITIES ON THE FOLLOWING PAGES. TOGETHER, YOU CAN PLAN WHERE TO GO, AND WHAT TO DO.

Try to spot Pat. How many signs of Pat can you find on your adventure?

Pat was in the news when he got porcupine quills in his nose TWICE! Another good reason why dogs should be on leash.

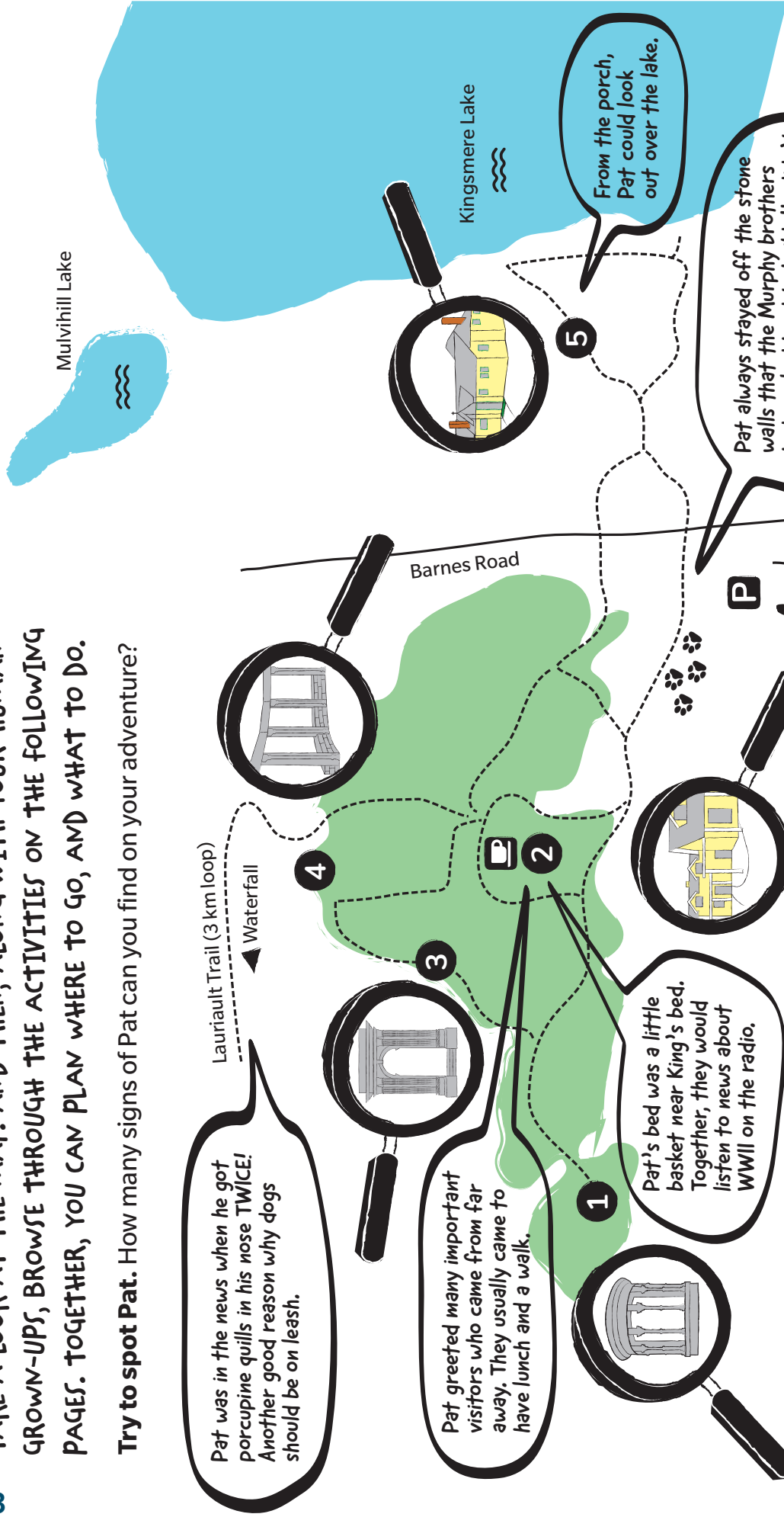
Pat greeted many important visitors who came from far away. They usually came to have lunch and a walk.

Pat's bed was a little basket near King's bed. Together, they would listen to news about WWII on the radio.

Pat arrived at the Estate in King's car.

From the porch, Pat could look out over the lake.

Pat always stayed off the stone walls that the Murphy brothers had worked hard to build. He didn't want any stones to come loose and fall off.



PAT WAS FAMOUS.

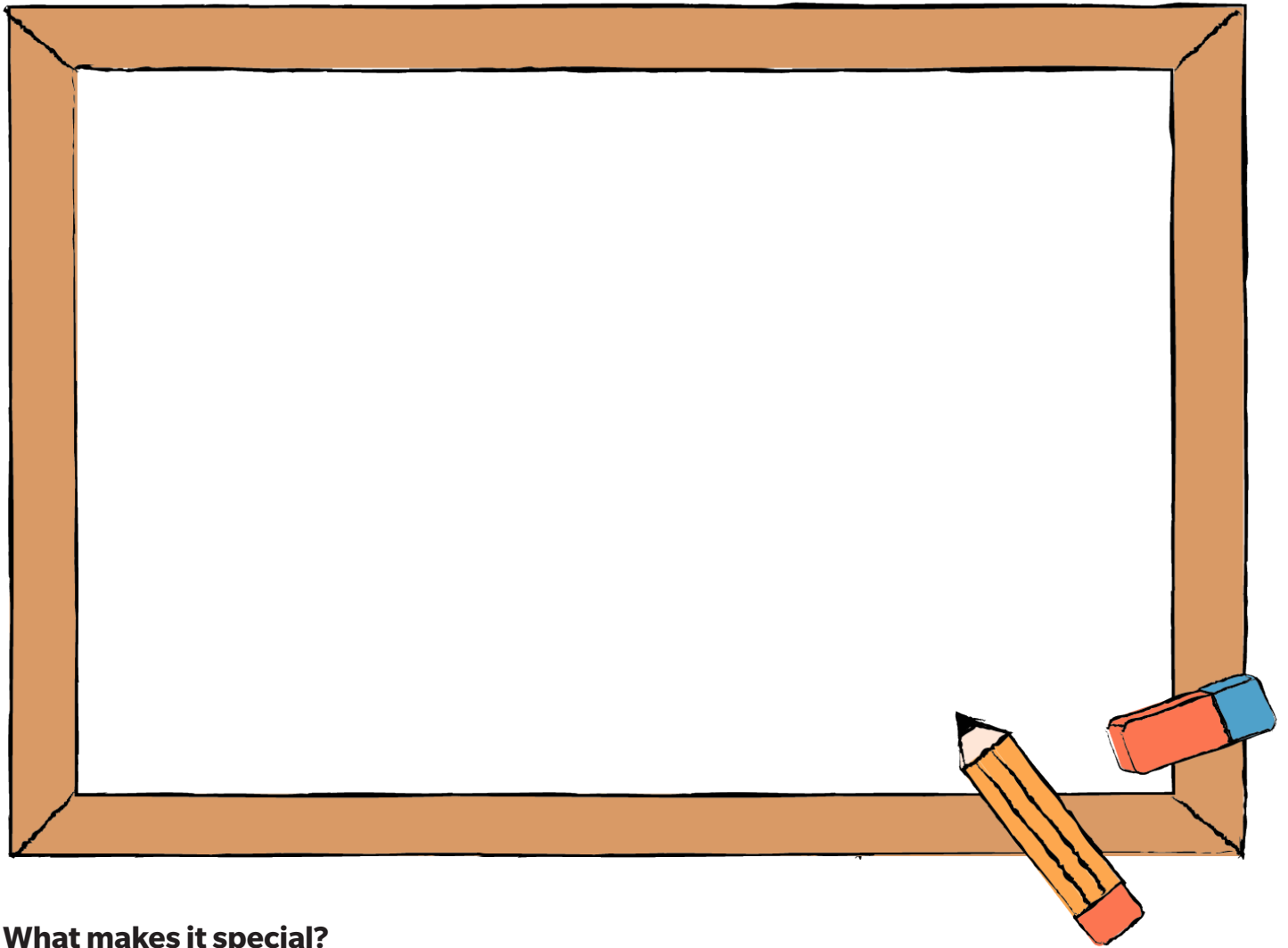
In the olden days, kids all over Canada knew his name. His human, William Lyon Mackenzie King, was prime minister from the 1920s to 1950. King and Pat came here during the summer to get away from the city. King loved to go for walks on the trails — and so did Pat! When King died, he left this place to the people of Canada, so that everyone could always come here to visit nature.

- 1 Abbey Ruins
- 2 Moorside cottage
- 3 Arc de Triomphe
- 4 Window on the Forest
- 5 Kingswood cottage

PICTURE IT

Many very important people (VIPs) from other countries have visited the Mackenzie King Estate.

As you go around, think of what Canadian treasures of nature you would show a VIP. At the end of your adventure, choose your favourite.



What makes it special?

Send your photo or a nice drawing to someone you find very important.

You have a VIP too!

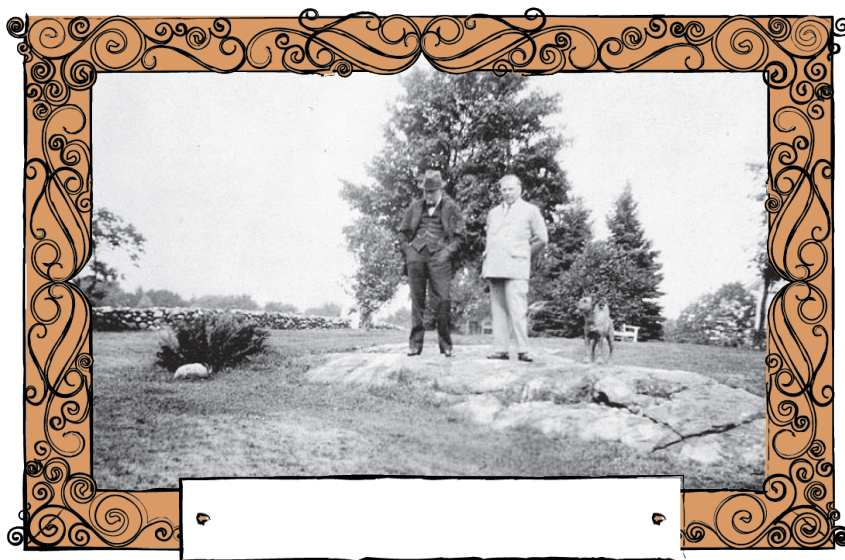
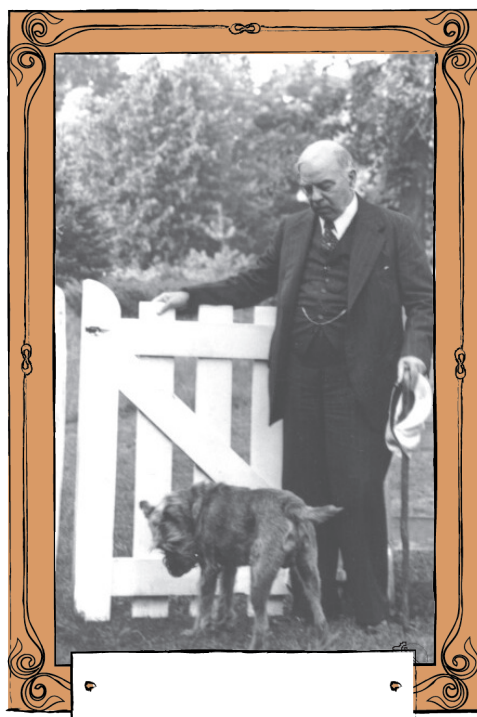
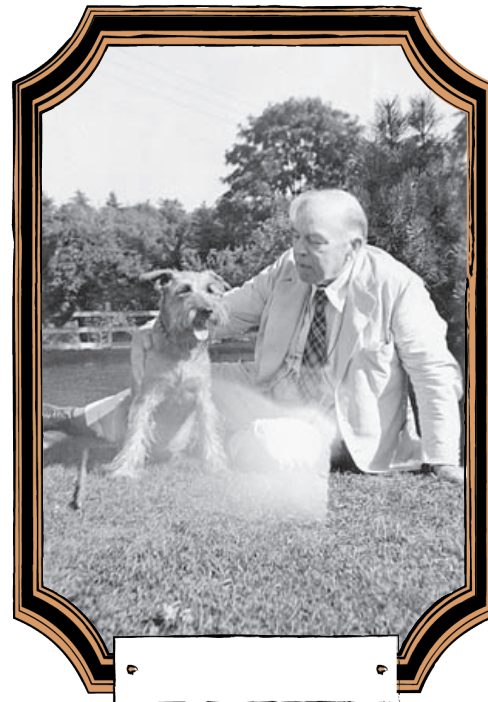
Pat's Album — Then and Now

at the Moorside gardens

Pat had his picture taken all around these gardens.
Can you find the spots where these photos were taken?

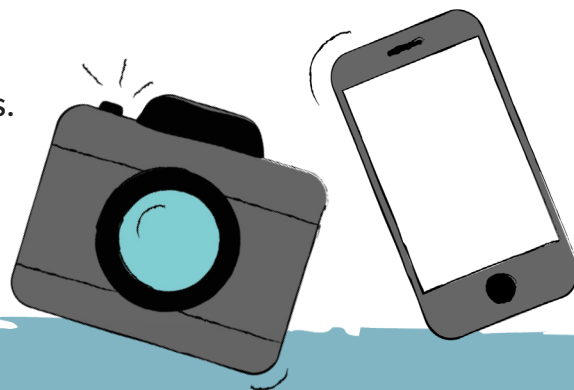


PICTURE IT



Take your own photo of the same scenes!

You play Pat. Someone you are with can play the humans.



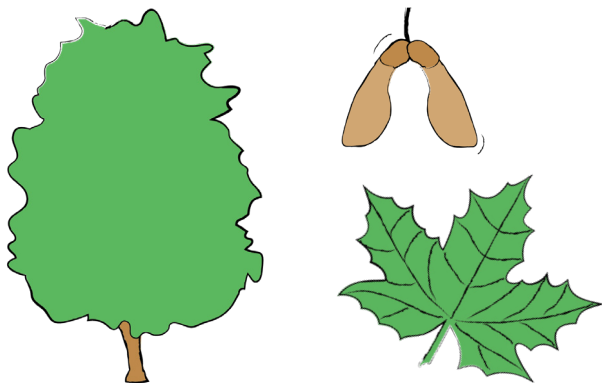
NOTICE IT

Pat and the Trees out on the paths

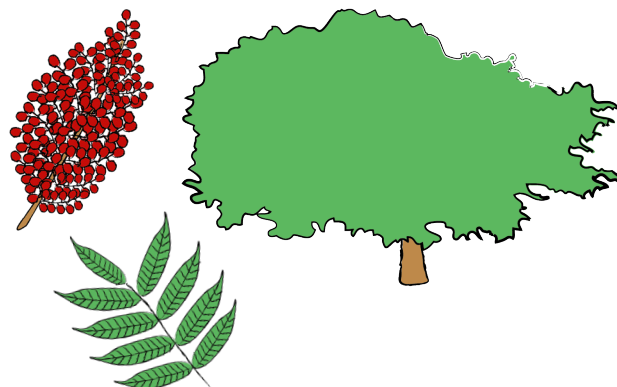
Dogs like trees — you know why!

As you explore the gardens and the surrounding trails,
try to notice these trees, and check off the ones that you see.

Sugar maple



Staghorn sumac



Ironwood

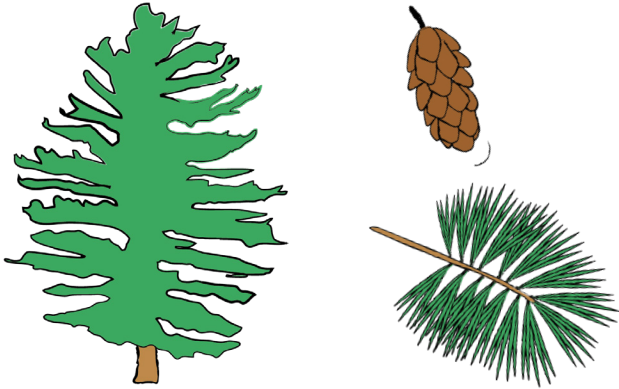


Red oak

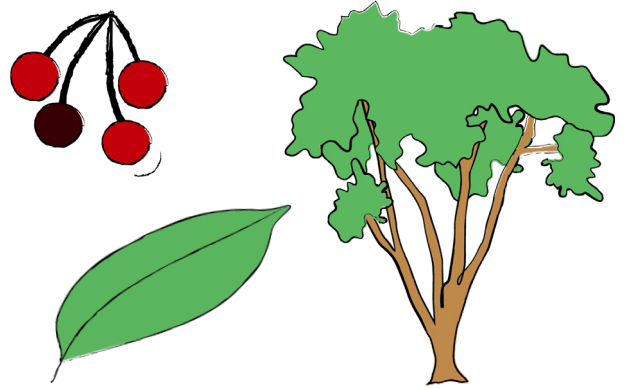


NOTICE IT

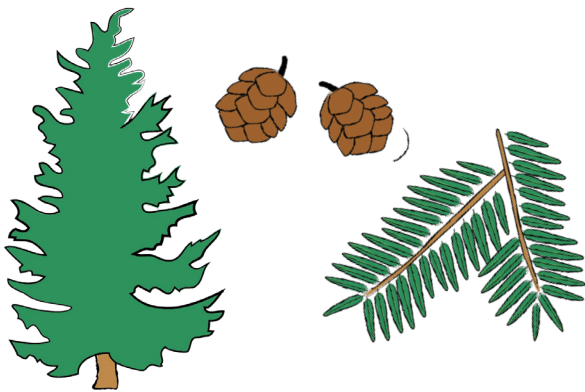
White pine



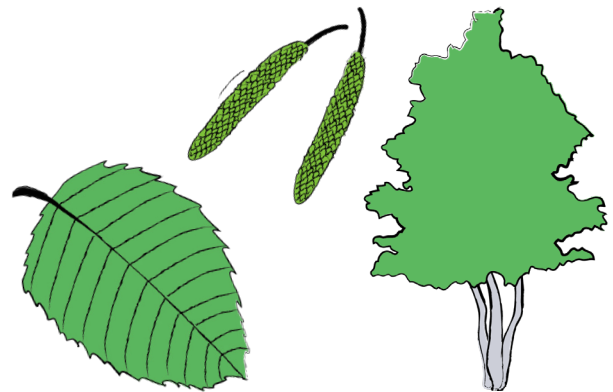
Black cherry



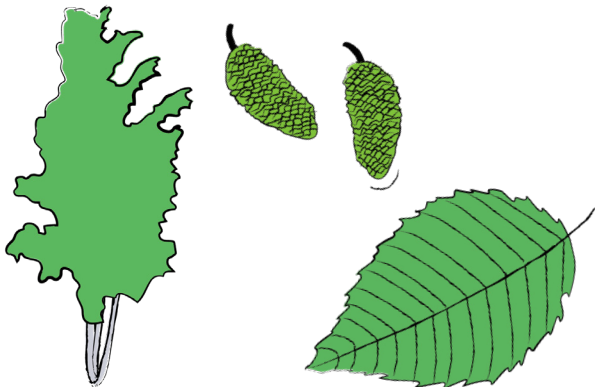
Hemlock



White birch



Yellow birch



Beech



NOTICE IT

Pat and the Creatures of the Park

As you go around on your invisible leash, do you notice these animals?

black or grey squirrel



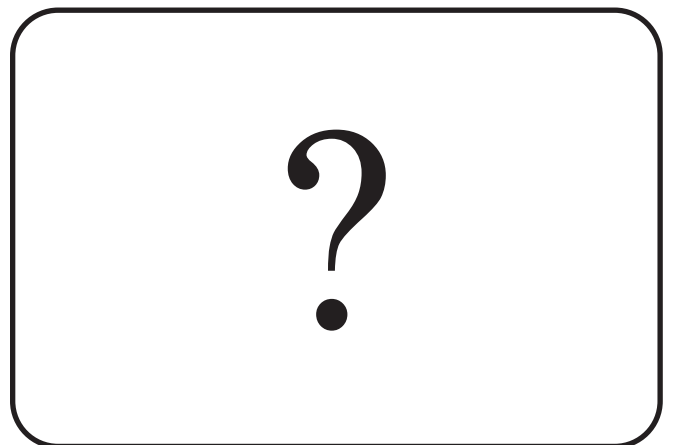
red squirrel



chipmunk



What else?



For every 10 different kinds of creature you notice
— **5 minutes later bedtime!**

PICTURE IT

Crow

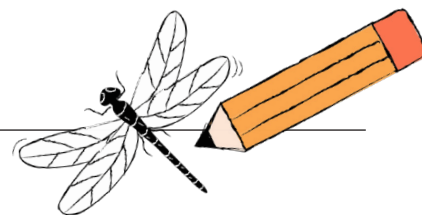
Songbird

Frog

Fish

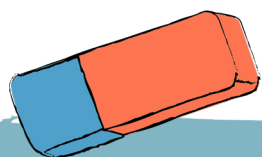
Bee

Dragonfly



Any other insect

What else?



Sniff, Sniff at the Kingswood cottages area

With the nose of Pat the dog, you can smell many things that a human can't.

During your visit to the Kingswood cottages and lakeshore, you probably can smell...

- 🐾 damp ferns
- 🐾 old maple leaves on the ground
- 🐾 an evergreen tree
- 🐾 the exact spot where the smell of fresh lake water wafts up on the land
- 🐾 pine needles on the lower path
- 🐾 other humans coming and what they ate for breakfast
- 🐾 where a water shrew lives under the boathouse
- 🐾 where a deer walked last night
- 🐾 where raccoons are living up in a tree
- 🐾 where some mice hide under the cottages

Can you? Pat could!

Ask someone what it smells like

- 🐾 close to the cottage _____
- 🐾 down the stairs, between the trees _____
- 🐾 beside the lake _____

At home, or anywhere

You can turn into Pat at home too, at a clap of the hands.

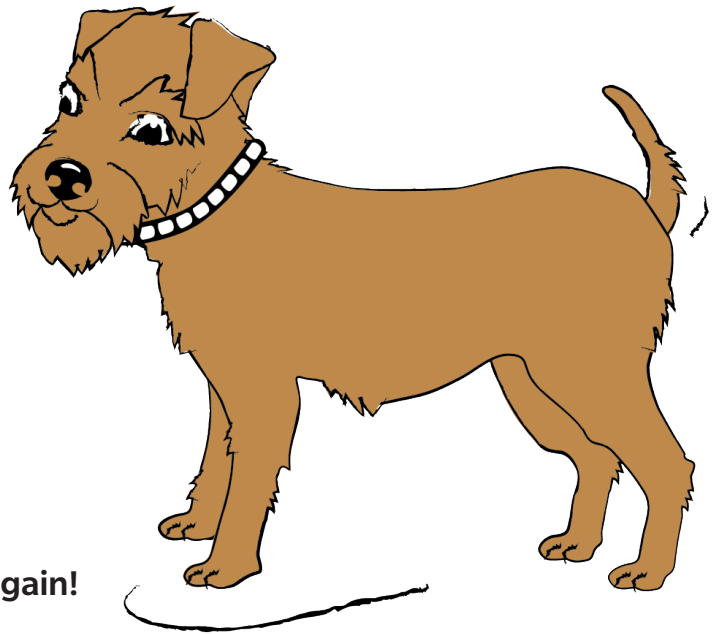
- 🐾 You can pick and draw your favourite Canadian treasure of nature, or select the photo you took to send to your own VIP.
- 🐾 Play “Sniff, Sniff” and you may pick up some strange or lovely smells.
- 🐾 You may find some of the same trees.
- 🐾 You might be able to discover what creatures live near you.

Prepare for your next Park visit.

- 🐾 Practise with binoculars.
- 🐾 Look for Park events you can take part in.
- 🐾 Ask for the other booklets like this one.

Time to turn back into a human — for now!

*Like King, you and I will want
everyone to be able to visit
this beautiful site for years
to come — forever!*



Ready?




One.

Two.

Three.

A clap of the hands — **and you're a human again!**

In case your friends don't believe that you really were Pat, during your adventure in Gatineau Park, you can ask a Park employee to sign your adventure certificate:

-  at the Gatineau Park Visitor Centre, 33 Scott Road, Chelsea
-  at the Mackenzie King Estate
-  at the Philippe Lake registration kiosk

Or you can ask any Gatineau Park employee.

DIPLOMA



To all doubters, scoffers, bemused friends and relatives:

Be it known that

Name

**WAS THE AVATAR OF PAT ON AN ADVENTURE AT
THE MACKENZIE KING ESTATE IN GATINEAU PARK.**



Signed by a Gatineau Park representative:



An Eastern Painted Turtle is shown in its natural habitat, basking on a log. The turtle has a dark, almost black carapace with distinct red markings along the edges of the scutes. Its head and neck are black with prominent yellow stripes. The background is a soft-focus natural setting with green grass and brown logs.

COVER ANIMAL – EASTERN PAINTED TURTLE

DID YOU KNOW?

The eastern painted turtle has a dark carapace, with red markings on the edge of the shell and yellow stripes on the head and neck.

It is quite common to observe it basking for hours on logs or rocks in the ponds, marshes, lakes or creeks of Gatineau Park. It stays close to dense vegetation to hide, but the adult's hard shell protects it from most predators. Fossils show that the painted turtle existed 15 million years ago! Next time you come across a painted turtle, take a minute to admire it — from afar, without disturbing it, of course!



NCC
CCN

Gatineau Park
Parc de la Gatineau

Gatineau Park Visitor Centre
33 Scott Road | Chelsea QC J9B 1R5
819-827-2020 | GatineauPark.gc.ca