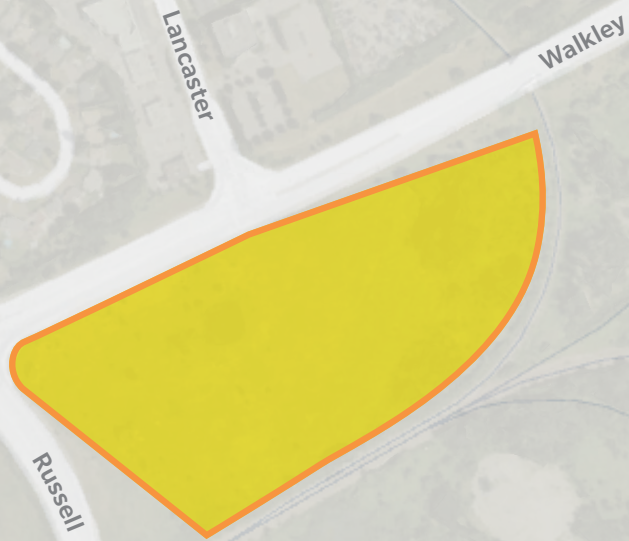




NCC
CCN



2391, 2630, 2646 and 2650 Walkley Road
Ottawa, ON

Development Land For Sale

16.51 acres (6.68 hectares)

NCC Real Estate Development Branch

land-terrain@ncc-ccn.ca

ncc-ccn.gc.ca

Property Overview

Civic Address 2391, 2630, 2646 and 2650 Walkley Road, Ottawa

Location Southeast corner of Russell and Walkley roads, in the Ottawa east industrial market in the east end of the City of Ottawa

Land Area 16.51 acres (6.68 hectares)

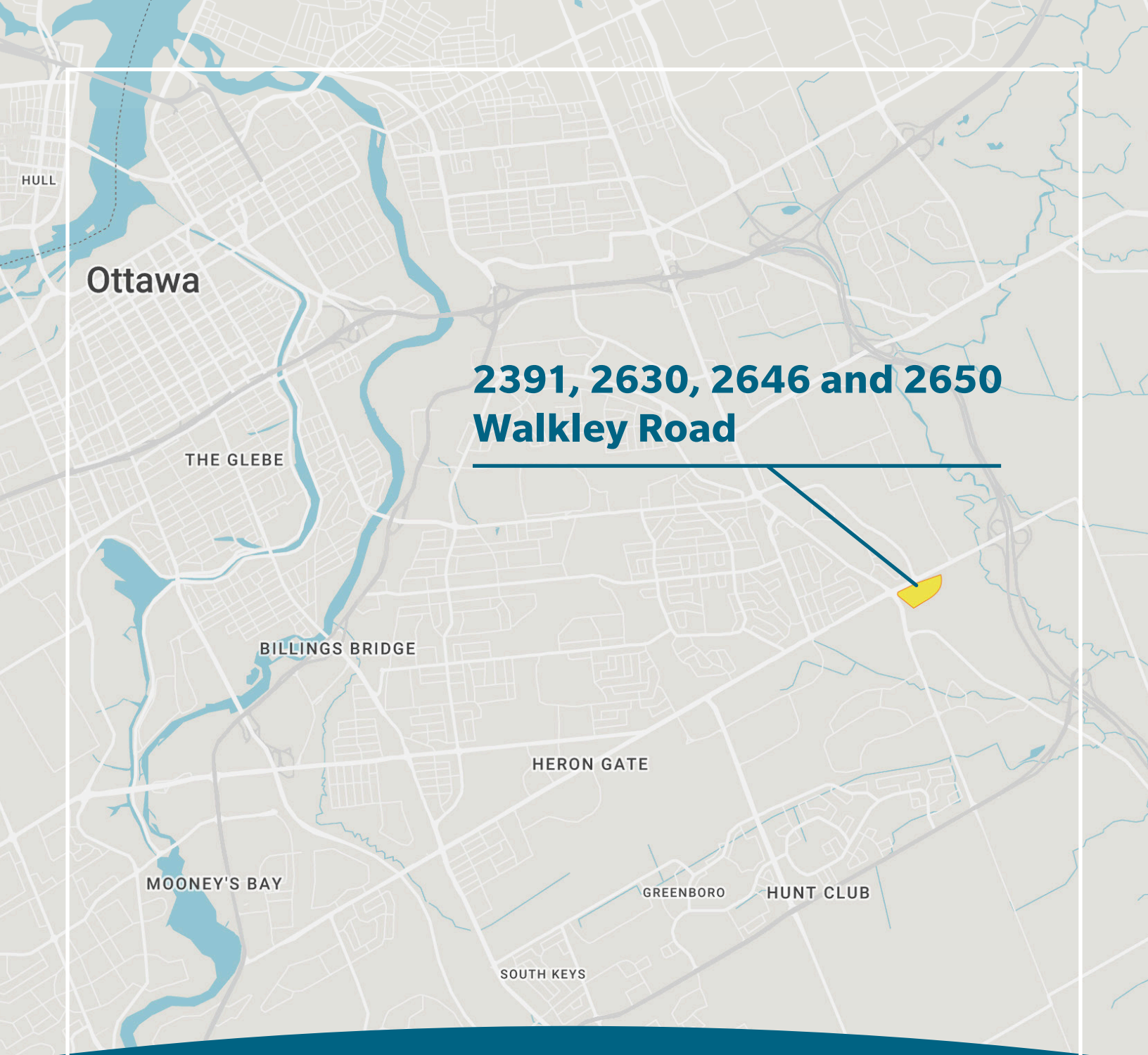
Property Taxes \$55,077 (2016)

Zoning GM1 [137] S 139 - General mixed use

Legal description Part of Lots A and 1, Concession 6, Rideau Front, in the Township of Gloucester, designated as Part 3 on 5R-5597, Part 9 on 4R-8319 and Part 6 on Plan 4R-15555, in the City of Ottawa

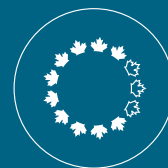
PIN 04262-0153 , 04262-0160 and part of PIN 04262-0227.

Availability Immediate



**2391, 2630, 2646 and 2650
Walkley Road**

Contact Us



**NCC
CCN**

NCC Real Estate Development Branch

land-terrain@ncc-ccn.ca

ncc-ccn.gc.ca

Canada