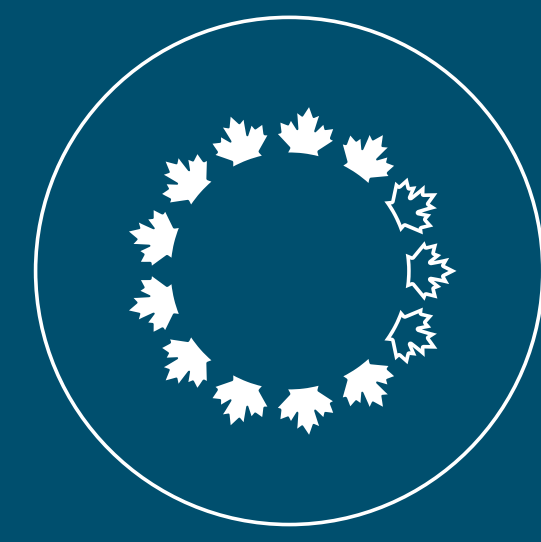


NATIONAL CAPITAL COMMISSION
COMMISSION DE LA CAPITALE NATIONALE

Review of the Gatineau Park Master Plan Public Consultation

The NCC is reviewing its Gatineau Park Master Plan, and has invited you to this public consultation to initiate a discussion on the long-term planning for Gatineau Park.



NCC | CCN

Gatineau Park
Parc de la Gatineau

Gatineau Park Infrastructure

Gatineau Park has a vast array of infrastructure and amenities to enhance the visitor experience in the Park.

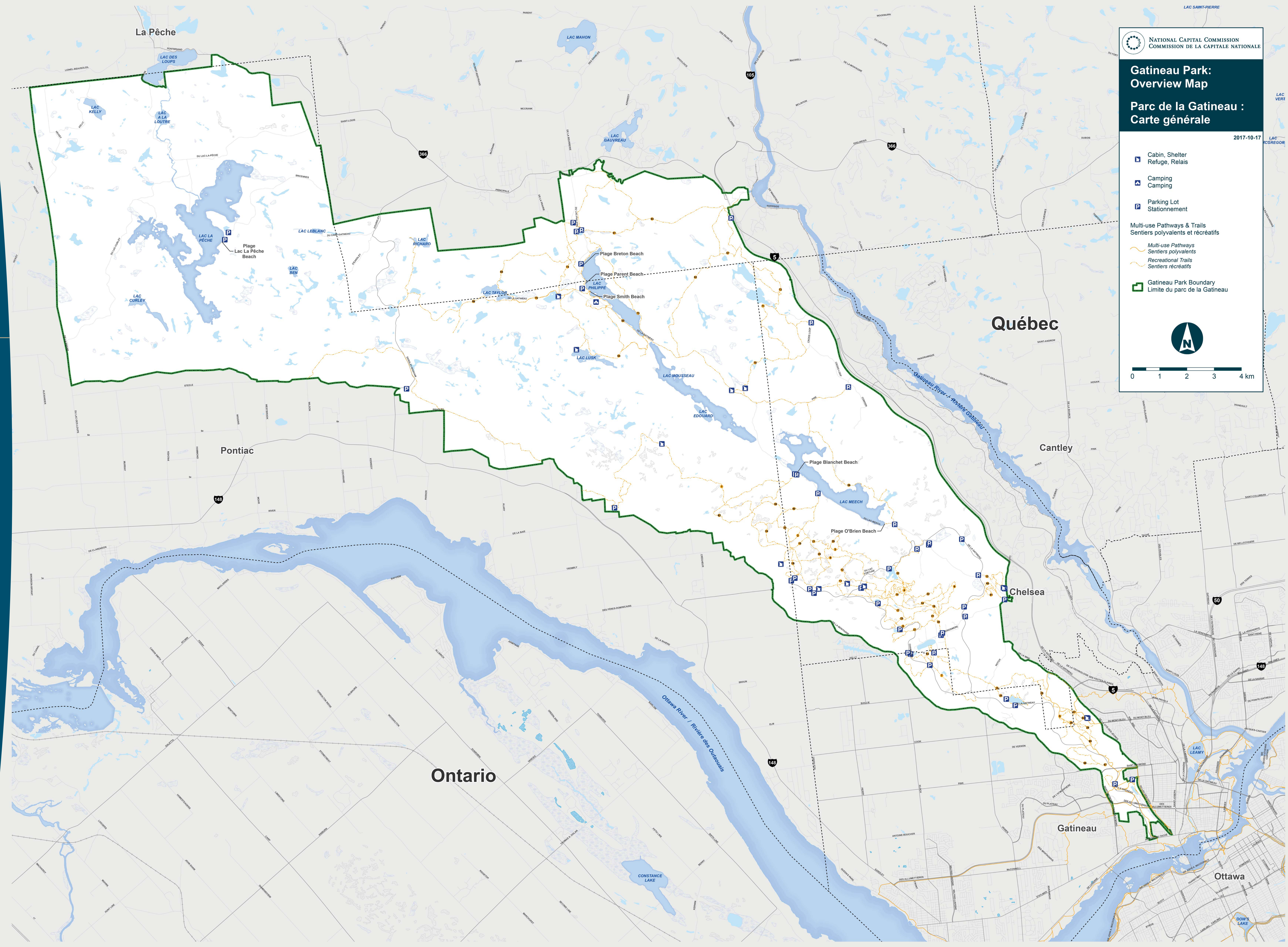
Territory of **361 km²**  11 dams **33 km** of parkways

 7.8 km electrical transmission infrastructure  61 properties acquired since 2008, for a total of 214.2 hectares **650** picnic tables

One visitor centre and two seasonal complexes  30 parking lots  80 dry toilets and 7 sanitary buildings

 2 filtration plants for drinking water  9 road bridges, 49 bridges / footbridges on trails, 600 culverts **18 km** of gravel roads

 9 day shelters **2.6 km** of guardrails  3 building complexes






NATIONAL CAPITAL COMMISSION
COMMISSION DE LA CAPITALE NATIONALE

Gatineau Park: Overview Map

Parc de la Gatineau :
Carte générale

2017-10-17

-  Cabin, Shelter, Refuge, Relais
-  Camping
-  Parking Lot, Stationnement

Multi-use Pathways & Trails
Sentiers polyvalents et récréatifs

 Gatineau Park Boundary
Limite du parc de la Gatineau



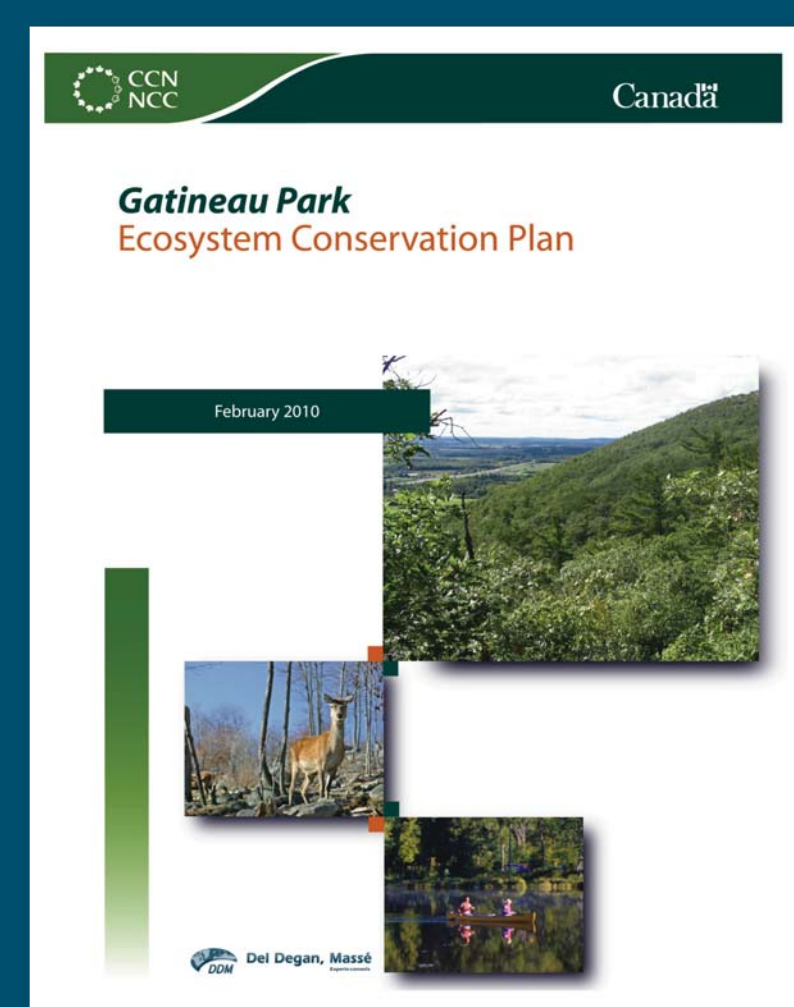


NCC | CCN

Gatineau Park
Parc de la Gatineau

Natural Environment

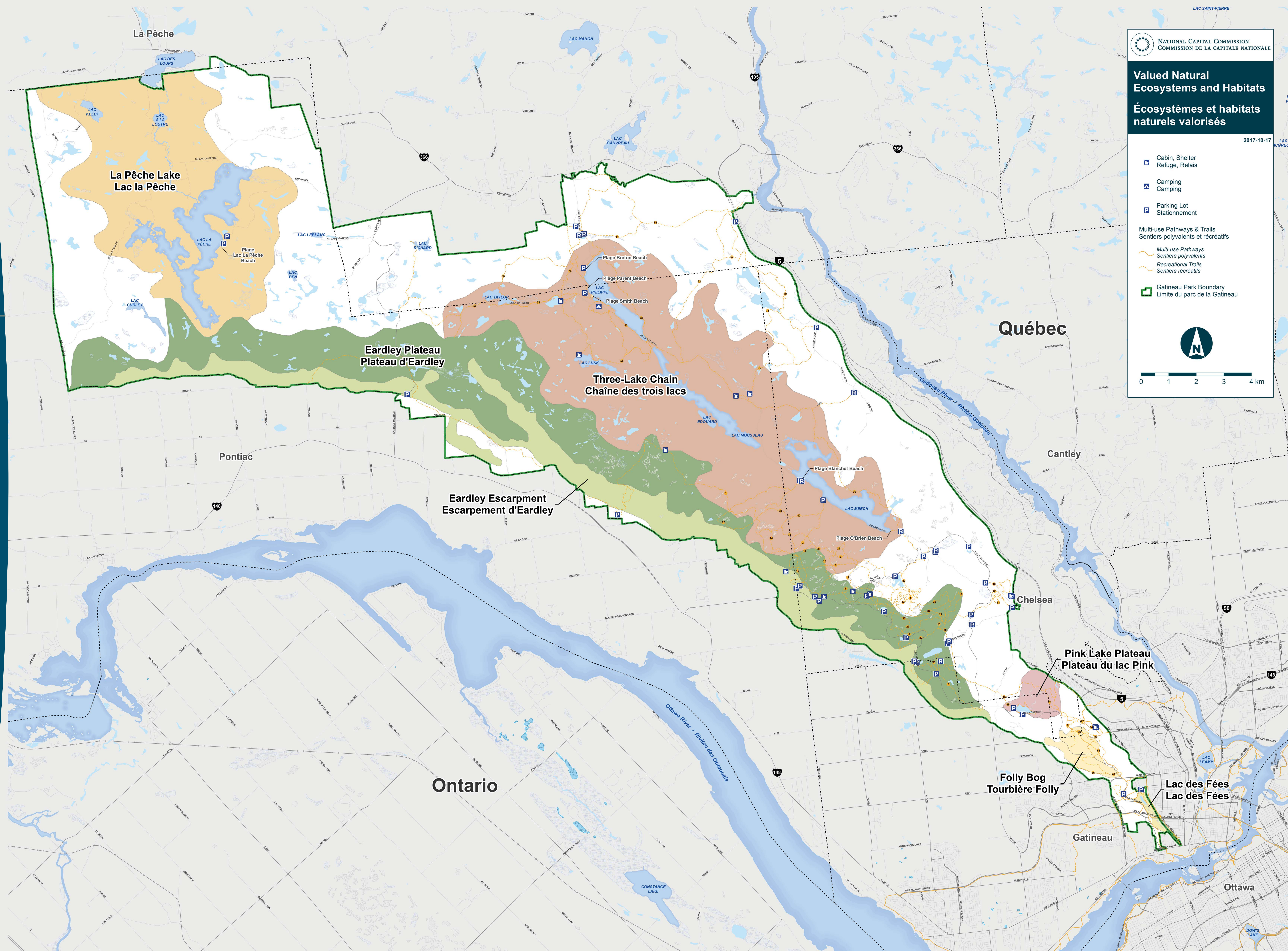
- 50 lakes
- One rare, meromictic lake (Pink Lake)
- 7 high-value ecosystems and habitats
- 2,500 plant species
- 230 species of birds
- 150 species at risk
- 50 species of mammals
- 40 tree species
- 40 scientific research permits per year
- 12 ecosystem health indicators

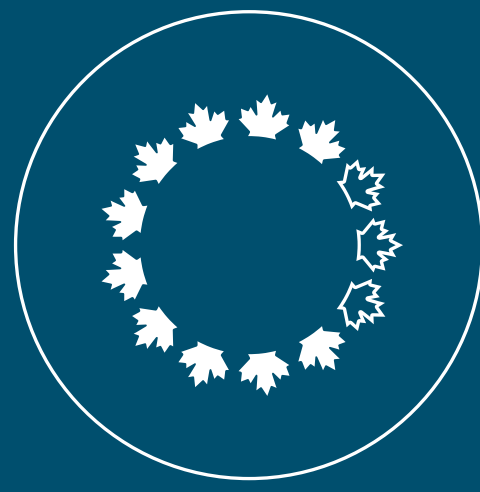


Key achievements

- *Gatineau Park Ecosystem Conservation Plan* (2010)
- *Report on Gatineau Park Ecosystems* (2015)

- Restoration of ecosystems: Eardley Escarpment and Meech lake
- *Evaluation and identification of valued natural ecosystems and habitats* (2007)





NATIONAL CAPITAL COMMISSION
COMMISSION DE LA CAPITALE NATIONALE

Recreation and the Economy

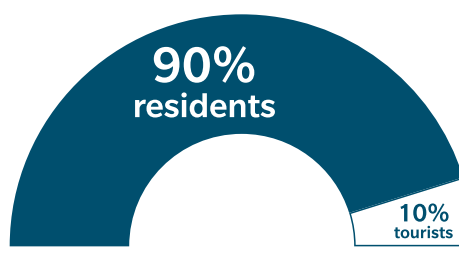
Gatineau Park offers recreational activities that respect its mission as the Capital's conservation park, while also recognizing its significant economic impact.

2.6 million
visits year round

 Hiking is the most popular activity spring through fall

 **60 km**
of snowshoe trails

12 
Ready-to-camp sites


90% residents
10% tourists
Gatineau Park visits

170 km
of hiking trails

13 km 
of equestrian trails

1 alpine ski hill
(Camp Fortune)

\$241.5 million
contributed annually to GDP

200 km
of cross-country
ski trails


6 beaches

9,500
season passes
annually

\$184 million
spent by visitors on
restaurants, sporting
equipment, etc.

98 km
of mountain
bike trails

**Mackenzie
King Estate**

21,000 nights
of camping annually

Cross country skiing
is the most popular
activity in winter 

3
rock climbing
sites

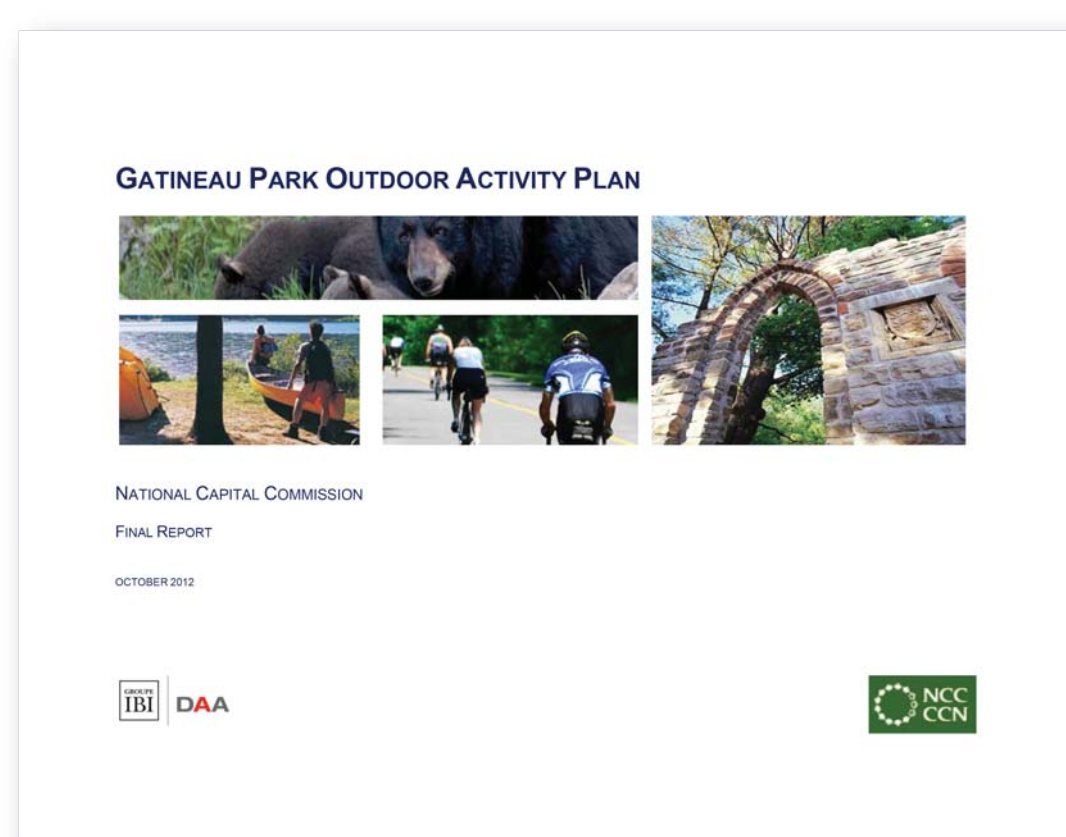
 **300**
campsites

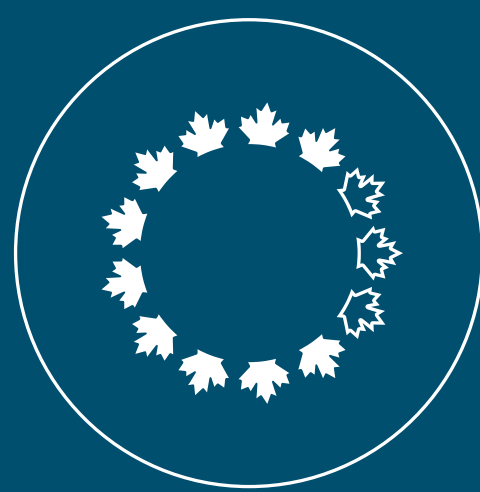
14
picnic
sites

30,000
day passes
annually

Key Achievements

- *Gatineau Park Outdoor Activity Plan (2012)*
- *Gatineau Park Visitor and Economic Impact Study (2017)*
- Responsible trail management project (ongoing)





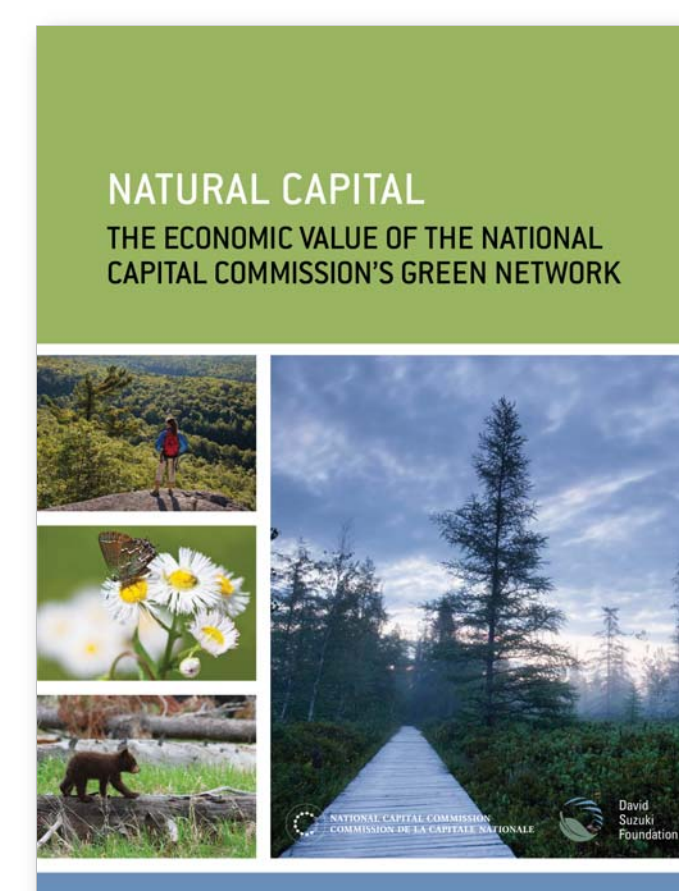
NATIONAL CAPITAL COMMISSION
COMMISSION DE LA CAPITALE NATIONALE

National Symbol and Communication

- 1,000 new Canadians hosted every year for snowshoeing programs
- 1,000 students hosted annually for school group programs
- 1,600 students were visited in schools through our programs in 2016–2017
- Over 120,000 visitors per year at the Gatineau Park Visitor Centre
- 12,000 individual trips with the 2016 Fall Rhapsody shuttle program

Key Achievements

- *Natural Capital: The Economic Value of the National Capital Commission's Green Network* (2016)
- *Gatineau Park Sustainable Transportation Plan* (2015)
- *Gatineau Park Interpretation Strategy* (2015)
- NCC scientific research day

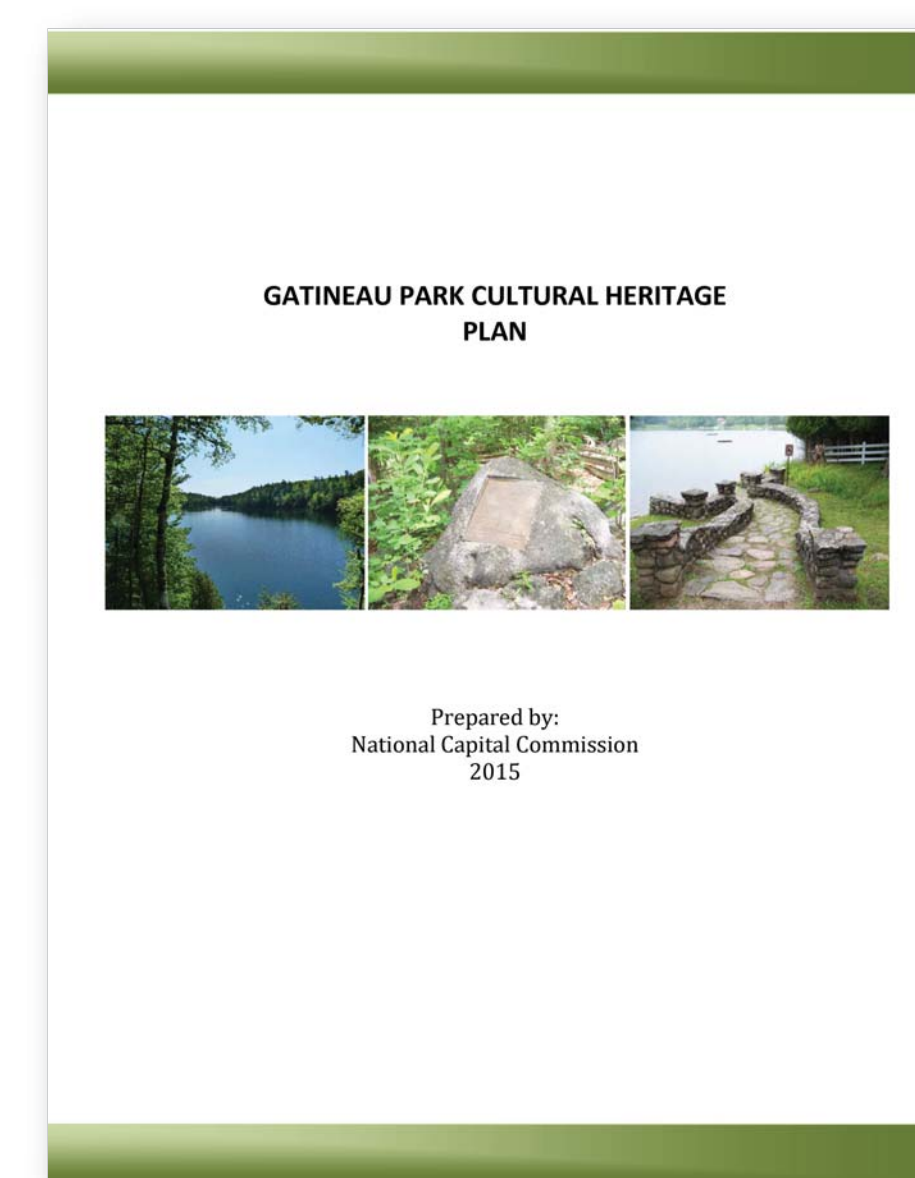


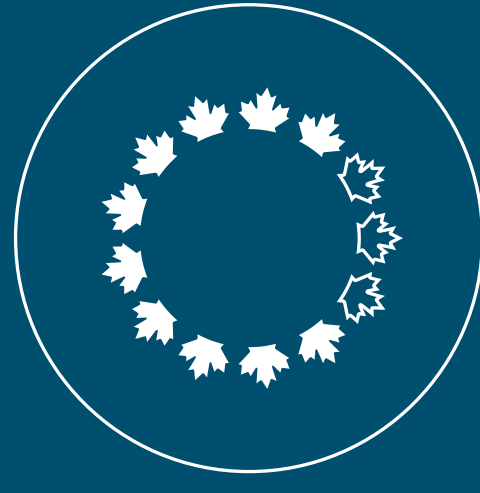
Cultural Heritage

- Indigenous presence for 6,000 years
- 24 national heritage buildings
- Mackenzie King Estate: 50,000 visitors per year
- 2 official residences
- King Mountain geodesic point, National Historic Site

Key Achievements

- *Gatineau Park Cultural Heritage Plan* (2015)
- Rehabilitation of the Strutt House
- Conversion of Healey house to a day shelter and renovation of Herridge Shelter
- Improving the visitor experience at the Mackenzie King Estate (2013)





NATIONAL CAPITAL COMMISSION
COMMISSION DE LA CAPITALE NATIONALE

Partnerships

The NCC collaborates with many partners and volunteers in the following categories:



Municipalities



Culture and Interpretation



Sports and Leisure



Environment



Scientific Research



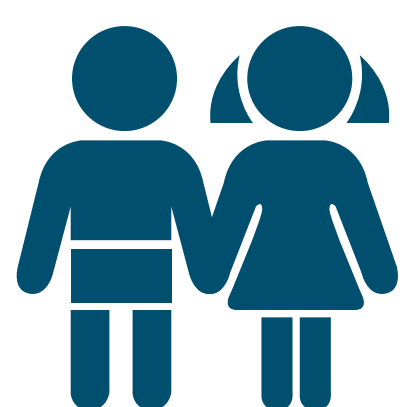
Tourism



Government



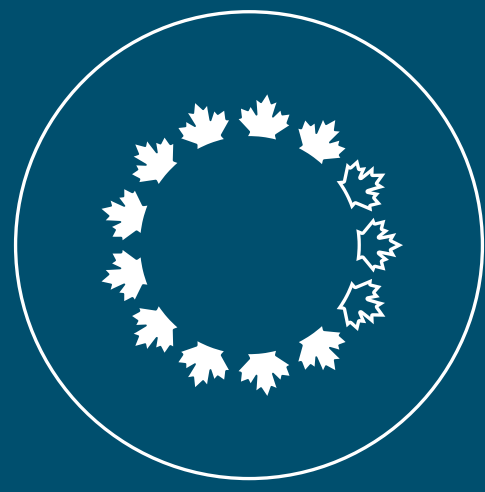
Transportation



Youth



Business



NATIONAL CAPITAL COMMISSION
COMMISSION DE LA CAPITALE NATIONALE

Review of the Gatineau Park Master Plan: Next Steps

