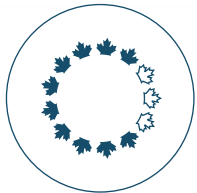


MIXED USE COMMERCIAL SPACE

FOR LEASE

670 Alexandre-Taché
Boulevard
Gatineau, QC



**NCC
CCN**

Marc Papineau
613-239-5678, ext. 5427
Marc.Papineau@ncc-ccn.ca

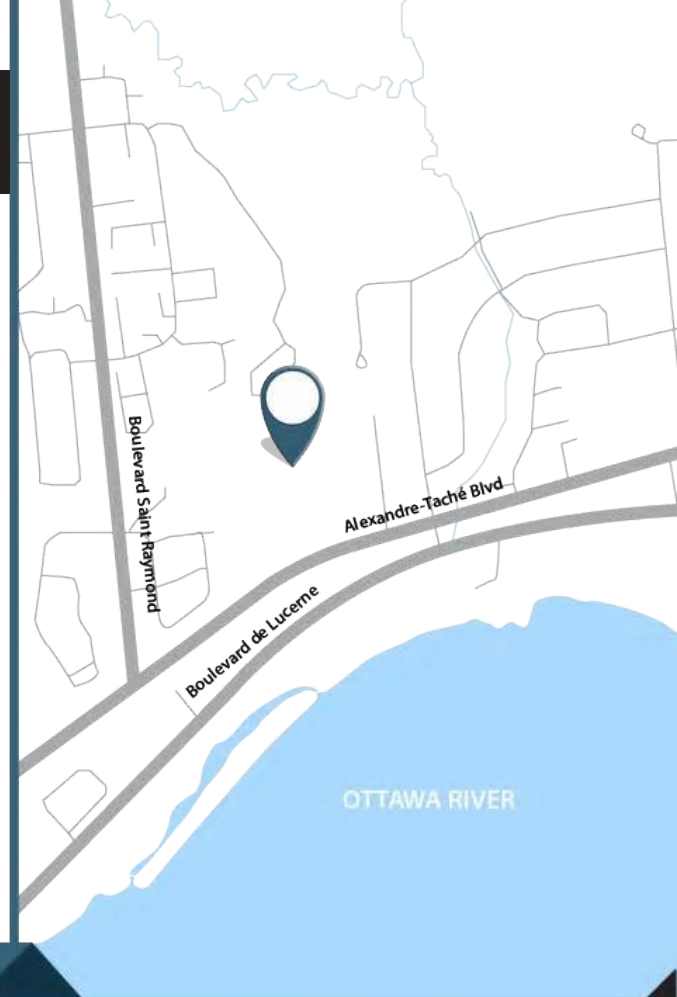
Building Highlights

Moore Farm Estate

Moore Farm Estate is about 15 minutes from downtown Ottawa via the Champlain Bridge and the Ottawa River Parkway and about 5 minutes from downtown Gatineau in the Plateau-Manoir des Trembles on busy Alexandre-Taché Boulevard. The property forms part of the NCC capital urban land's plan. The property features:

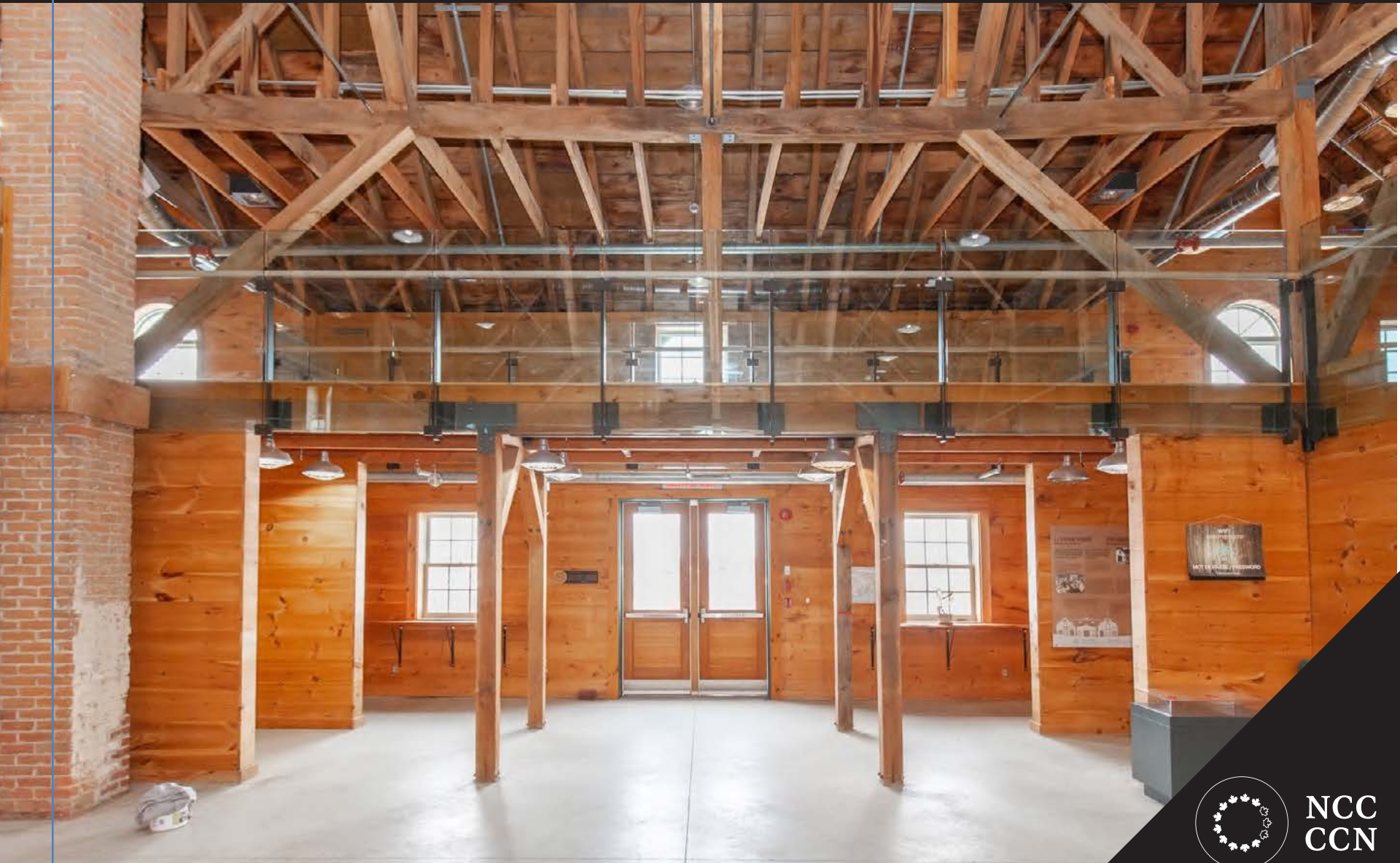
- 10.29 ha (25.6 acres) of land
- 4 buildings included: a pavilion, riding arena, icehouse and caretaker's residence
- The pavilion has been completely renovated including: new electrical, HVAC, and millwork
- High quality finishes throughout
- Excellent exposure to Alexandre-Taché Boulevard
- Impressive view of Ottawa River
- Adjacent to multi-use pathway
- On-site parking

Pavilion:	8,901 sq ft
Basic Rent:	\$12.00 psf
Lease Structure:	Care free
Property Taxes:	\$87,206 per year
Available:	Immediately



NCC
CCN

Pavilion



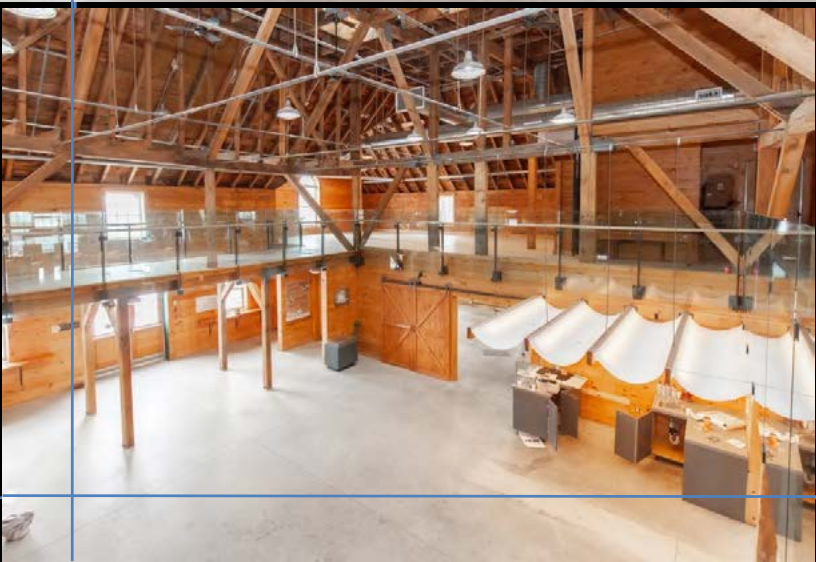
NCC
CCN

Pavilion



NCC
CCN

Pavilion



NCC
CCN

Pavilion



NCC
CCN

Land



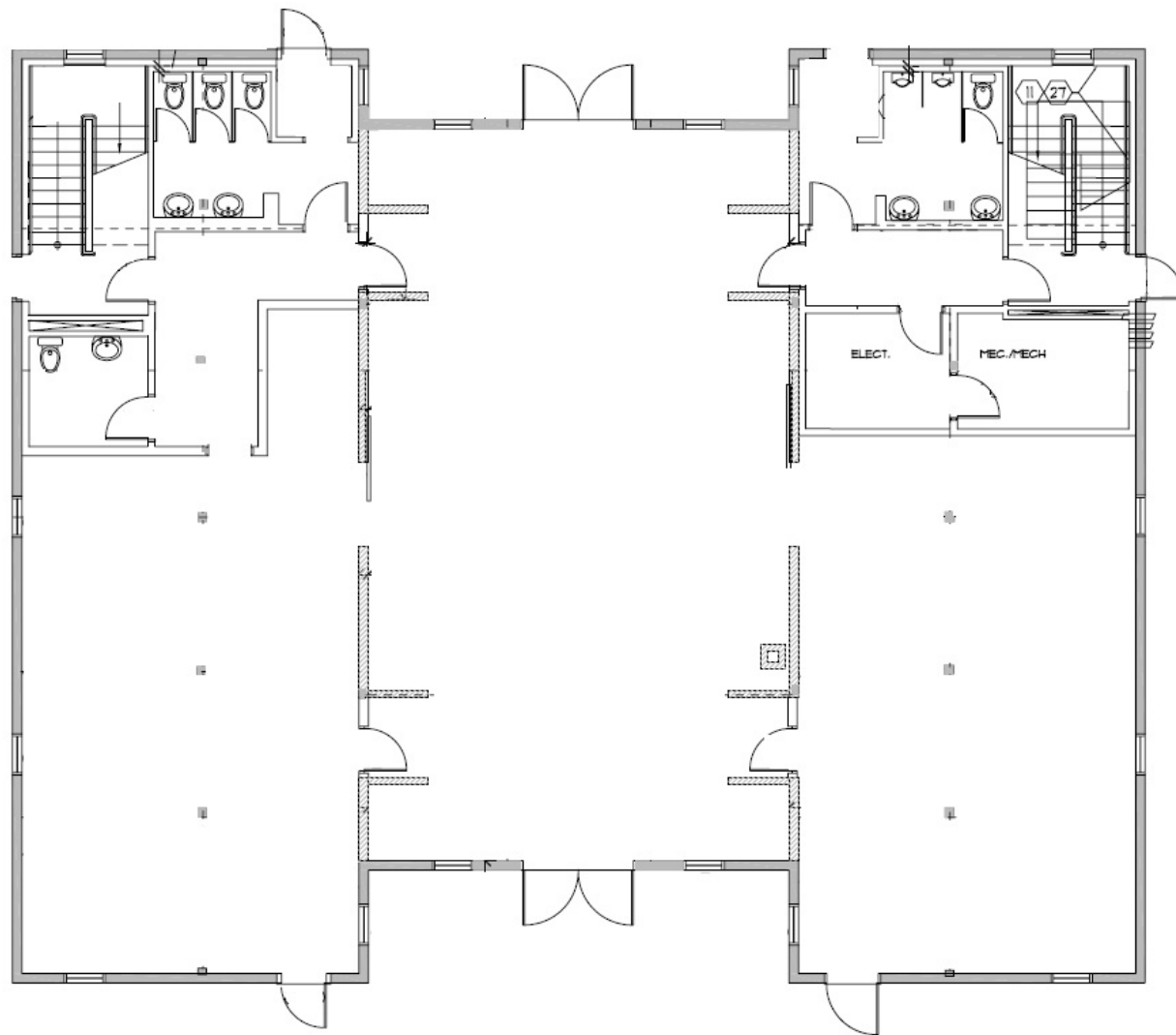
NCC
CCN

Land

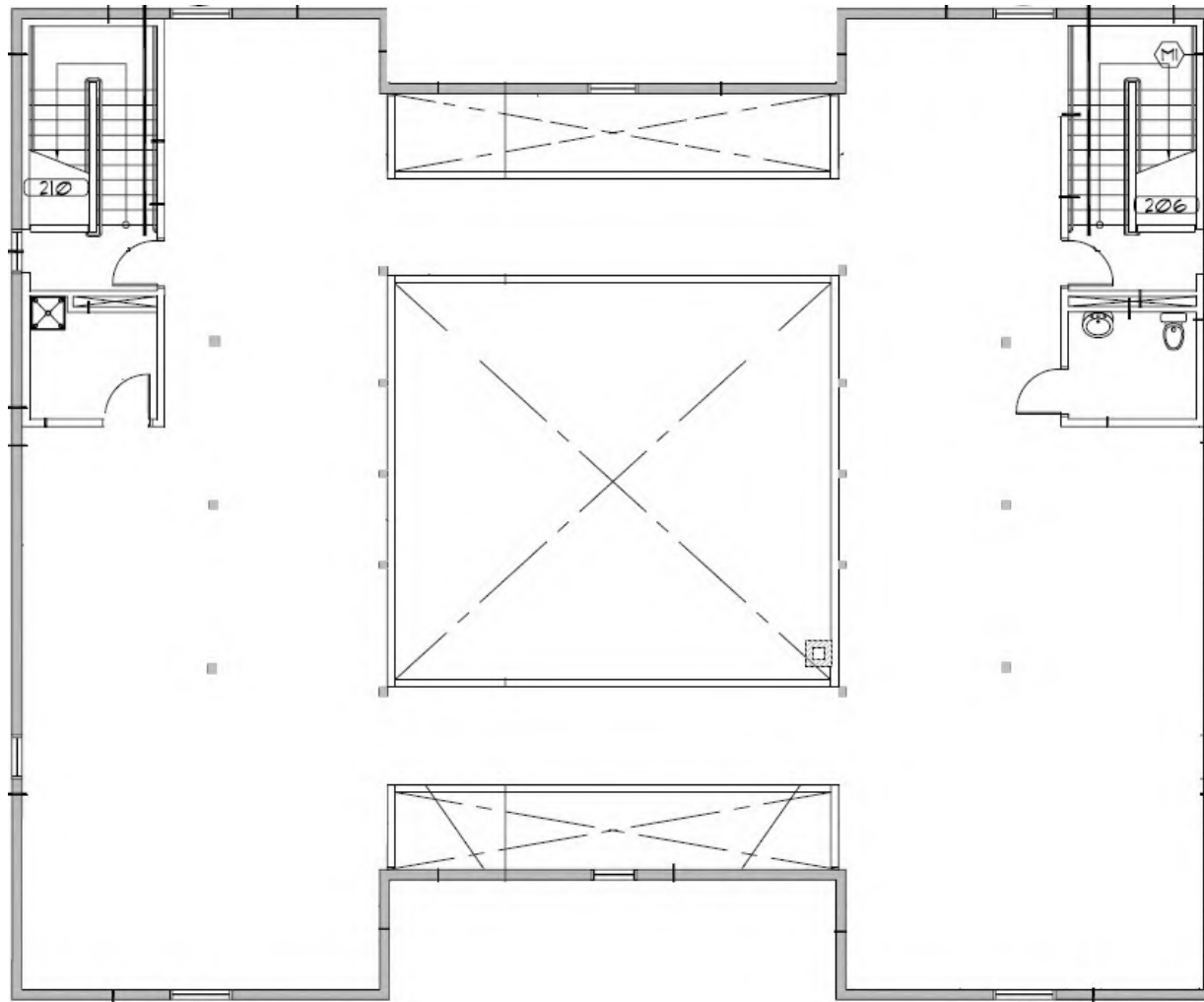


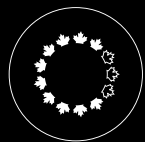
NCC
CCN

Ground Floor



Second Floor





NATIONAL CAPITAL COMMISSION
COMMISSION DE LA CAPITALE NATIONALE