



# OFFICE SPACE FOR LEASE

## BYWARD MARKET

# 12-18

# YORK STREET

SUITE 400 - OTTAWA, ON



NATIONAL CAPITAL COMMISSION  
COMMISSION DE LA CAPITALE NATIONALE



<https://ncc-ccn.gc.ca/doing-business>



[leasing-location@ncc-ccn.ca](mailto:leasing-location@ncc-ccn.ca)



NCC  
CCN



12-18 YORK STREET

**4,415** SQ.FT.  
**OFFICE SPACE FOR LEASE**

GROSS RENT..... \$30.00 PSF

ADDITIONAL COSTS..... UTILITIES AND IN-SUITE  
JANITORIAL

AVAILABILITY..... IMMEDIATE

PARKING..... OPTIONS AVAILABLE NEARBY



TURN  
KEY  
OFFICE



BUILDING  
SIGNAGE RIGHTS  
AVAILABLE



ELEVATOR  
ACCESS



HIGH CEILINGS  
AND EXPOSED  
STONE WALLS



VIEWS OF  
CLARENDON AND  
YORK COURTYARDS



METRES FROM  
THE RIDEAU  
LRT STATION



OPEN  
CONCEPT  
MEZZANINES

## TURNKEY OFFICE SPACE IN THE BYWARD MARKET

In a building housing the former offices of two successful high-technology firms, 12 York Street's high ceilings, exposed stone walls and open-concept mezzanines provide a unique layout. Ideally located in the ByWard Market and just metres from the new Rideau light-rail station, the area offers a large variety of shops, restaurants, hotels, services and tourist attractions.

## LOCATION



### POINTS OF INTEREST

- 1 National Gallery of Canada
- 2 Notre-Dame Cathedral Basilica
- 3 Embassy of the United States
- 4 Major's Hill Park
- 5 Revenue Canada Agency
- 6 Fairmont Château Laurier
- 7 Rideau Centre
- 8 Rideau LRT Station



NATIONAL CAPITAL COMMISSION  
COMMISSION DE LA CAPITALE NATIONALE



<https://ncc-ccn.gc.ca/doing-business>

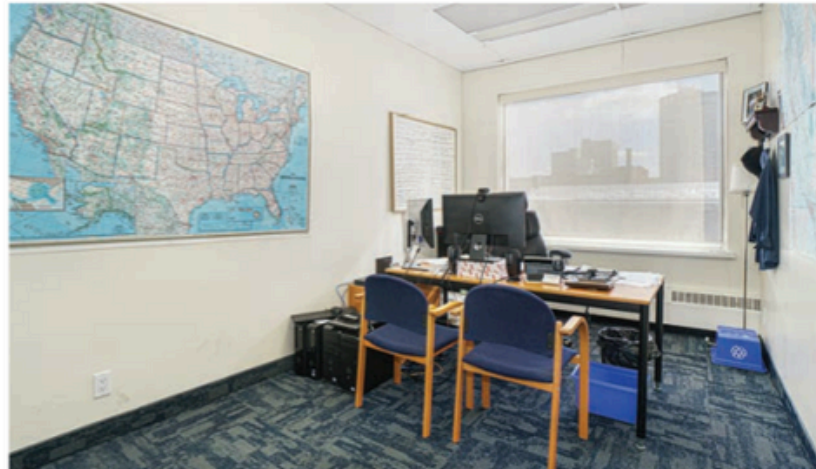


[leasing-location@ncc-ccn.ca](mailto:leasing-location@ncc-ccn.ca)



NCC  
CCN

12-18 YORK STREET



NATIONAL CAPITAL COMMISSION  
COMMISSION DE LA CAPITALE NATIONALE



<https://ncc-ccn.gc.ca/doing-business>



[leasing-location@ncc-ccn.ca](mailto:leasing-location@ncc-ccn.ca)

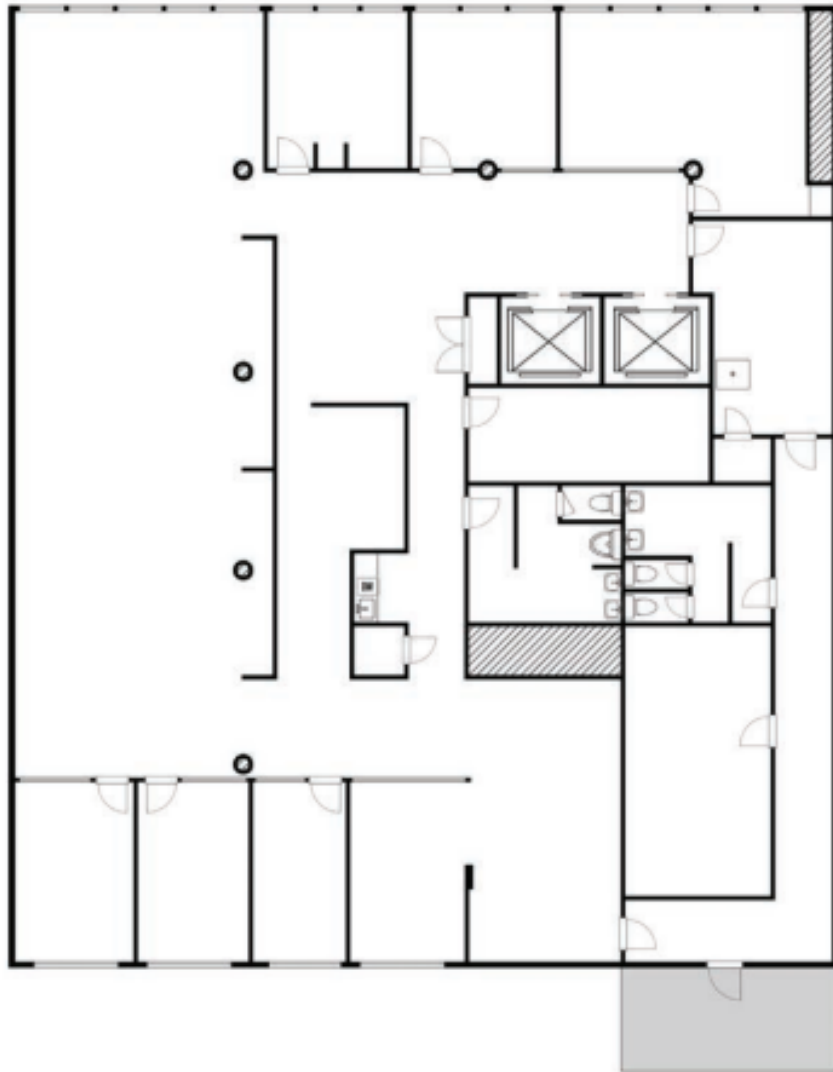


NCC  
CCN

12-18 YORK STREET

# FLOORPLAN

## SUITE 400



NATIONAL CAPITAL COMMISSION  
COMMISSION DE LA CAPITALE NATIONALE



<https://ncc-ccn.gc.ca/doing-business>



[leasing-location@ncc-ccn.ca](mailto:leasing-location@ncc-ccn.ca)