



OFFICE SPACE FOR LEASE

BYWARD MARKET

457

SUSSEX
DRIVE

2ND FLOOR - OTTAWA, ON



NATIONAL CAPITAL COMMISSION
COMMISSION DE LA CAPITALE NATIONALE



<https://ncc-ccn.gc.ca/doing-business>



leasing-location@ncc-ccn.ca



NCC
CCN

457 SUSSEX DRIVE

600 SQ.FT.

OFFICE SPACE FOR LEASE

GROSS RENT..... \$30.00 PSF
ADDITIONAL COSTS..... UTILITIES
AVAILABILITY..... IMMEDIATE
PARKING..... OPTIONS AVAILABLE NEARBY



VARIETY
OF RESTAURANTS
NEARBY



NEAR
BUS/LRT &
PUBLIC PARKING



VARIETY
OF RETAIL
NEARBY



EXPOSED
STONE
WALLS

OFFICE SPACE WITH HERITAGE CHARM

A unique opportunity to lease office space on prestigious Sussex Drive. Situated in the ByWard Market among a wide variety of shops, restaurants, hotels and other amenities, 457 Sussex Drive is conveniently located near the new light-rail-transit system. Its exposed stone walls add to the charm of this extraordinary heritage building.

LOCATION



POINTS OF INTEREST

- 1 National Gallery of Canada
- 2 Notre-Dame Cathedral Basilica
- 3 Embassy of the United States
- 4 Major's Hill Park
- 5 Revenue Canada Agency
- 6 Fairmont Château Laurier
- 7 The Ottawa Sign (tourist attraction)
- 8 Rideau Centre



NATIONAL CAPITAL COMMISSION
COMMISSION DE LA CAPITALE NATIONALE



<https://ncc-ccn.gc.ca/doing-business>



leasing-location@ncc-ccn.ca



NCC
CCN

457 SUSSEX DRIVE



NATIONAL CAPITAL COMMISSION
COMMISSION DE LA CAPITALE NATIONALE



<https://ncc-ccn.gc.ca/doing-business>



leasing-location@ncc-ccn.ca



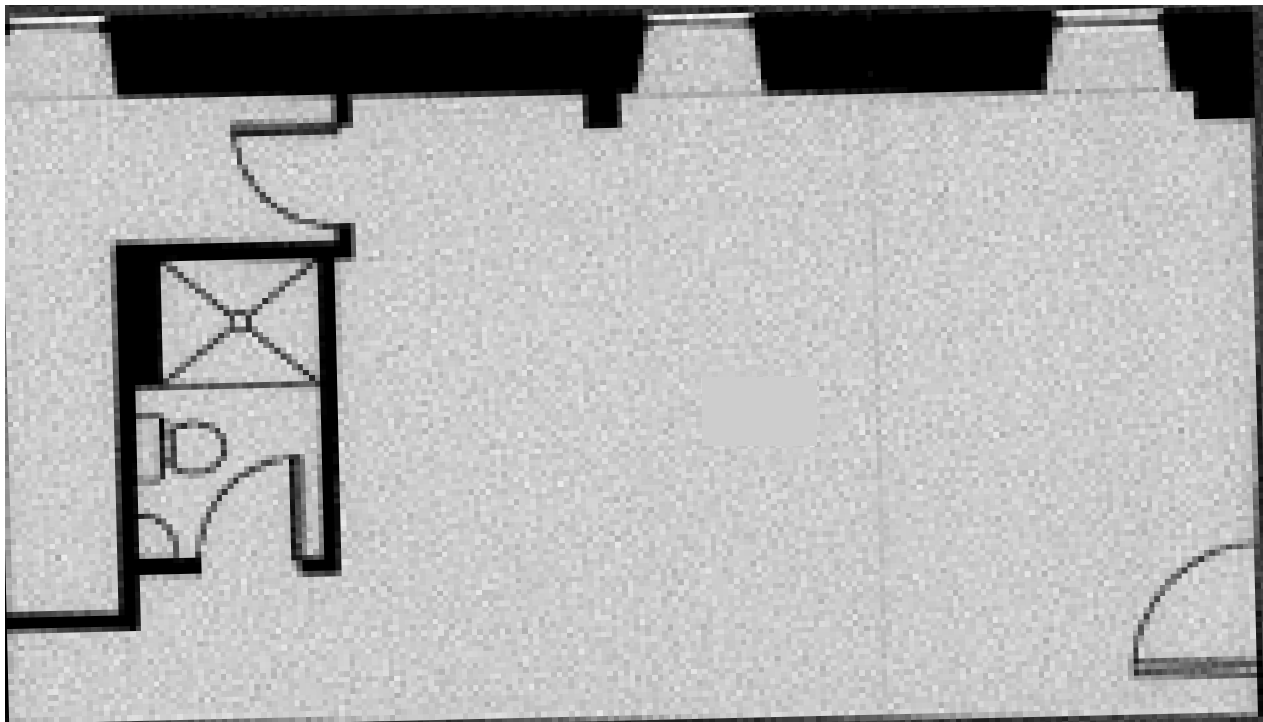
NCC
CCN

457 SUSSEX DRIVE



FLOORPLAN

SECOND FLOOR, UNIT 2



NATIONAL CAPITAL COMMISSION
COMMISSION DE LA CAPITALE NATIONALE



<https://ncc-ccn.gc.ca/doing-business>



leasing-location@ncc-ccn.ca