



RETAIL SPACE FOR LEASE

BYWARD MARKET

541

SUSSEX
DRIVE

OTTAWA, ON



NATIONAL CAPITAL COMMISSION
COMMISSION DE LA CAPITALE NATIONALE



<https://ncc-ccn.gc.ca/doing-business>



leasing-location@ncc-ccn.ca



NCC
CCN

541 SUSSEX DRIVE

1,078 SQ.FT.

RETAIL SPACE FOR LEASE

GROSS RENT..... \$40.00 PSF

ADDITIONAL COSTS..... UTILITIES

AVAILABILITY..... IMMEDIATE

PARKING..... STREET PARKING



PREMIER SHOPPING CENTER



12 ft. CEILINGS THROUGHOUT



APPROX. 25 ft. FRONTAGE ON SUSSEX DRIVE



VEHICULAR TRAFFIC 20,000/DAY



SIGNAGE RIGHTS AVAILABLE



PEDESTRIAN TRAFFIC 9,000/DAY



NEAR BUS/LRT AND PUBLIC PARKING

HIGH-TRAFFIC RETAIL

Located along Sussex Drive between George Street and York Street, in the busy ByWard Market, this location offers exceptional visibility, high foot traffic and quick access to the light-rail transit system. Surrounded by numerous nearby attractions, including the Rideau Centre, the National Art Gallery and Major's Hill Park, it is a prime retail location.

LOCATION



POINTS OF INTEREST

- 1 National Gallery of Canada
- 2 Embassy of the United States
- 3 Revenue Canada Agency
- 4 Major's Hill Park
- 5 Fairmont Château Laurier
- 6 The Ottawa Sign (tourist attraction)
- 7 Rideau Centre
- 8 The Westin Ottawa



NATIONAL CAPITAL COMMISSION
COMMISSION DE LA CAPITALE NATIONALE



<https://ncc-ccn.gc.ca/doing-business>



leasing-location@ncc-ccn.ca




**NCC
CCN**

541 SUSSEX DRIVE



NATIONAL CAPITAL COMMISSION
COMMISSION DE LA CAPITALE NATIONALE



<https://ncc-ccn.gc.ca/doing-business>



leasing-location@ncc-ccn.ca



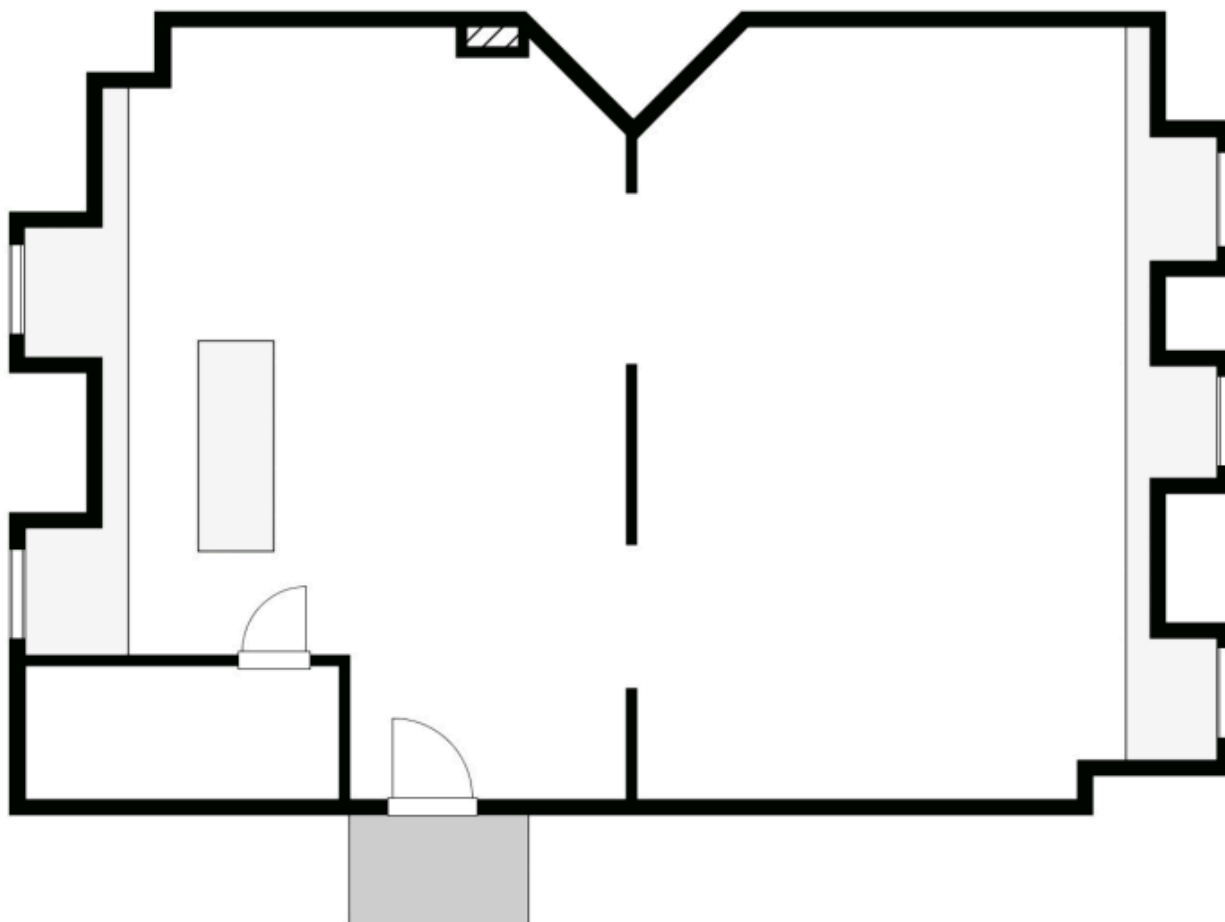
NCC
CCN



541 SUSSEX DRIVE

FLOORPLAN

GROUND FLOOR



NATIONAL CAPITAL COMMISSION
COMMISSION DE LA CAPITALE NATIONALE



<https://ncc-ccn.gc.ca/doing-business>



leasing-location@ncc-ccn.ca